

OPPORTUNITY FOR ALL



REIMAGINING THE FUTURE OF GREATER NEW HAVEN: OUR PLAN AND CALL TO COMMUNITY



In late 2019, Greater New Haven was embarking on a new decade of the 2020s — a time of opportunity — and The Community Foundation seized the moment by adopting a new strategic plan. Much of our work in 2019 that reinforced and informed the plan is highlighted in the **2019/20 Report to Our Community**, which is now completed and available online at cfghn.org/Report2019-20. Due to the COVID-19 pandemic, the report will be available only in digital form.

Board of Directors

Khalilah Brown-Dean
Chair
Flemming L. Norcott Jr.
Vice Chair
Maysa Akbar
Roxanne J. Coady
Kellyann Day
Joseph Gordon
Carlton Highsmith
Terry H. Jones
Fernando Muñiz
Marcella Nuñez-Smith
Gregory J. Pepe

William W. Ginsberg
President & CEO

More information
available online at
cfghn.org/COVID19

facebook.com/cfghn
twitter.com/cfghn

Find the report online at cfghn.org/Report2019-20

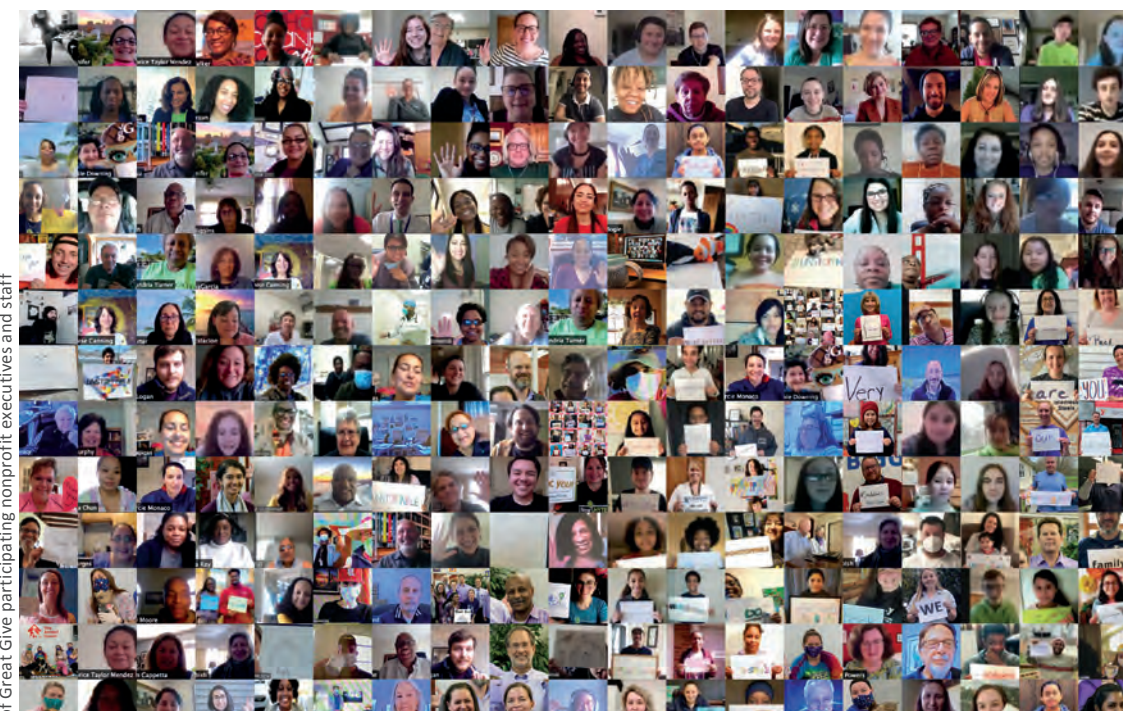
COVID-19

Great Give Success Signifies Region's Commitment and Generosity

The generosity exhibited during May's Great Give® 2020 surpassed expectations in the face of a crisis like no other and demonstrated how resilient and united our community is and the power of what can happen through a connected and determined community. Ultimately, over \$3.6 million was raised online for Greater New Haven's nonprofits, almost doubling last year's previous record, through more than 16,000 individual donors.

SPECIAL REPORT 2

JUNE 2020



Photos of Great Give participating nonprofit executives and staff

THANK YOU FROM THE BOTTOM OF OUR HEARTS

Inside Highlights

- | | | | | | |
|-----|--|----|-------------------------------------|----|---------------------------------------|
| 2 | Special Message from Foundation Leadership | 10 | COVID-19 Community Fund Donors | 12 | Valley's Response to COVID-19 |
| 4-9 | Millions in Grant Distributions | 12 | Donor Advisors Rise to the Occasion | 13 | Small Business Loan Program Launching |

Facing COVID-19 and Looking to the Future

June 5, 2020

Dear Friends:

At the end of 2019, The Community Foundation adopted a new five-year strategic plan, including new vision and mission statements. In three words, the plan's title summarizes its central idea: *opportunity for all*. In 2020, so much has changed, both from the impact of the global COVID-19 pandemic in our community and from the rising chorus of voices demanding greater racial equity and justice. The importance and the urgency of the strategies that we put in place last year have been magnified by the events of the last several months.

Our New Mission: to inspire, support, inform, listen to and collaborate with the people and organizations of Greater New Haven to build an ever more connected, inclusive, equitable and philanthropic community.

For philanthropy in Greater New Haven, as for business and government, COVID-19 is a crisis like no other. Social isolation is altering — perhaps permanently — how we connect with one another, while unemployment at Depression-era levels is redefining vulnerability in our society and stretching the public and private safety net beyond its breaking point. The path of recovery is highly uncertain, but one thing is clear: as a community, we are not going back to the way things were before COVID-19.

By working together, drawing on our deep reserves of resilience and generosity, building on our economic strengths, and making greater equity a defining element of our common vision, we believe that our community can make COVID-19 a departure point for reimagining the future of Greater New Haven.

The devastating health and economic impacts of COVID-19 fall disproportionately on people of color, widening the racial and ethnic disparities that have increasingly come to define our society over the last two decades. No matter how measured — rates of hospitalization and death, access to testing and care, unemployment, undocumented immigrants ineligible for public support, businesses receiving Small Business Administration loans, or young people with the connectivity to truly learn through remote schooling — the COVID-19 data in our community tell a terrible tale of inequality defined by race, ethnicity, citizenship and zip code. These data tell us that our pre-COVID approaches to advancing racial equity have proven to be inadequate.

As we write this, long-standing racial inequities and injustices are boiling over into protest and violence in cities across America following the tragic murder of an African-American man by a white police officer in Minneapolis. Our country and our community have reached a moment of reckoning with the structural racism that is so deeply embedded in our society.

At this time of daunting challenges, the stakes could not be higher. So much about the future of our community — whether we can become a cohesive whole, recover what has been lost, and move forward to a new time of greater opportunity — will depend on how we respond now.

The Foundation's 2020-24 strategic plan is anchored in our enduring belief that if our community works together effectively, Greater New Haven can be a place of expanding *opportunity for all* in the coming decade.

Our New Vision: Greater New Haven as a community of expanding opportunity in which all people share a sense of common destiny and have the support and connections needed to build successful lives.

Attracted by New Haven's urban life style and amenities, people have been moving both to downtown and to the neighborhoods in recent years at a pace not seen in our lifetimes. Our region's biomedical economy — including healthcare, pharmaceuticals, medical research and biotechnology — continues its strong growth and is well-positioned to create much-needed new jobs and to be a driver of Connecticut's economic progress.

Our plan is all about how this growth can create *opportunity for all*. We are focusing on education and skill-building for jobs in the growth sectors of tomorrow. We are focusing on support for entrepreneurs, especially women and people of color, and on building a more equitable local system of entrepreneurial support. We are focusing on ensuring that growth does not result in housing displacement. We are committed to our traditional role of supporting the local nonprofit sector in providing people with the support and connections they need to build successful lives. And we are undertaking all of our work with a deepened commitment to greater equity as indispensable to progress, both for The Foundation in achieving our goals and for our community more broadly.

We believe that creating *opportunity for all* requires that local nonprofits, businesses, major institutions, donors, elected officials, neighborhood leaders and area residents work together in new ways toward shared goals and shared accountability. In doing our part, The Foundation will be listening more broadly to and collaborating more deeply with the people of Greater New Haven.

The Foundation is optimistic for other important reasons as well. The creativity, resilience and innovation shown by our nonprofit sector in responding to the challenges of COVID-19 constitute yet another chapter in its long, proud history of service.

Facing some of their toughest challenges ever, our nonprofits continue to inspire.

Furthermore, our community's generosity has been a bright beacon amidst the gloom of COVID-19. After receiving more than \$35 million in new gifts and charitable transfers in 2019, one of the highest annual totals in The Foundation's 92-year history, 2020 has continued to showcase our community's deep sense of caring. The Great Give 2020 was by far our most successful ever, raising \$3.6 million last month from more than 16,000 donors to benefit almost 400 local nonprofits. In addition, The Foundation's COVID-19 Community Fund, established in partnership with United Way of Greater New Haven, raised approximately \$2.7 million in six weeks in March and April.

With this support as well as additional Foundation funds, The Foundation will facilitate or directly provide more than \$10 million to local nonprofits in the first three months of the COVID-19 crisis. In addition to these grants, The Foundation is also working with public and private partners to establish a \$1.5 million loan fund for small minority-owned and women-owned businesses.

Rather than being deterred by COVID-19 or feeling helpless in the face of persistent inequity, The Foundation is pursuing with strengthened determination our vision of Greater New Haven as a community of *opportunity for all*. By working together, drawing on our deep reserves of resilience and generosity, building on our economic strengths, and making greater equity a defining element of our common vision, we believe that our community can make COVID-19 a departure point for reimagining the future of Greater New Haven.

Please join us in this vitally important work.


Khalilah L. Brown-Dean, Ph.D.
Chair


William W. Ginsberg
President & Chief Executive

\$2.7 Million Distributed in COVID-19 Community Fund Grants Since Inception

\$2.1 million in 2nd, 3rd & 4th rounds listed below

Recipient	Amount
Adonai Spiritual Formation Center.	\$3,000
<i>To support personal protective equipment, including masks, and health education to the West Hills and Dixwell/Newhallville communities.</i>	
Agency on Aging of South Central Connecticut Inc.	\$20,000
<i>To support meal delivery and cash assistance to homebound elders and people with disabilities.</i>	
All Our Kin Inc.	\$40,000
<i>To provide direct financial assistance to family child care providers, cleaning supplies, technology enhancements and infrastructure support.</i>	
ALS Association, Connecticut Chapter.	\$20,000
<i>To support direct financial assistance for ALS households in Greater New Haven who have suffered a loss of income due to COVID-19, respite care support for caregivers who are also essential workers and equipment/personal protective equipment for ALS families.</i>	
American Red Cross, Connecticut Chapter . . .	\$10,000
<i>To support additional staff to assist with blood services due to an increase in demand and a decrease in volunteers.</i>	
APNH: A Place to Nourish your Health.	\$20,000
<i>To support the purchase of meals for home delivery and grocery store gift cards for clients.</i>	
APT Foundation Inc.	\$40,000
<i>To support the purchase of equipment for telehealth services, personal protection equipment for staff and food for clients.</i>	
Arts Council of Greater New Haven	\$30,000
<i>To support financial assistance up to \$1,000 for low-income individual artists and small-budget creative institutions.</i>	
Believe in Me Empowerment Corporation . . .	\$15,000
<i>To support the provision of food and basic needs to families.</i>	
Believe In Me Empowerment Corporation . . .	\$15,000
<i>To provide food and basic needs essentials to individuals through the Emergency Food Service and housing programs.</i>	
Boys & Girls Clubs of Milford	\$22,000
<i>To support the purchase of personal protective equipment as well as staffing to meet state COVID-19 regulations for summer programming for youth.</i>	
Breakthrough Church.	\$5,000
<i>To support the purchase of additional food and basic needs items to distribute at the food pantry.</i>	
Casa Otonal Inc.	\$20,000
<i>To provide rental assistance and food for elderly residents.</i>	
Cathedral of Higher Praise.	\$5,000
<i>To support the purchase of food, storage and increased hours of operation to meet the increased demand for food for Fair Haven neighborhood residents.</i>	
Catholic Charities Inc. Archdiocese of Hartford	\$25,000
<i>To support clinical staff for mental health and/or substance abuse treatment through New Haven Outpatient Clinic, and to support case management services, personal protective equipment and basic needs essentials for families served through Centro San Jose.</i>	
Central Connecticut Coast YMCA	\$20,000
<i>To support the purchase of food and supplies for the childcare site serving children of healthcare workers at the New Haven YMCA.</i>	
Chapel Haven Schleifer Center Inc.	\$20,000
<i>To support the purchase of meals for clients and personal protective equipment for staff and clients.</i>	
Christian Tabernacle Baptist Church	\$5,000
<i>To support the provision of food and basic need support to the Newhallville/Hamden community.</i>	

Recipient	Amount
-----------	--------

“The racial/ethnic disparities in the COVID-19 pandemic are clear. Intergenerational and structural disinvestment in communities are contributing factors to the disparities we are seeing. Communities of color have limited access to high quality healthcare and are less able to social distance because they are more likely to live in densely populated neighborhoods and households.”

Dr. Marcella Nuñez-Smith, Member of The Community Foundation’s Board and COVID-19 Community Fund Grantmaking Committee

Clelian Adult Day Center (Apostles of the Sacred Heart Clelian Center Inc.)	\$25,000
<i>To support the purchase of personal protection equipment and program supplies, as well to support staffing.</i>	
Community Dining Room	\$20,000
<i>To support the purchase of to-go food containers, bags and cutlery in order to provide lunch and dinner and brunch on the weekends to residents on the Shoreline.</i>	
Concepts for Adaptive Learning	\$25,000
<i>To support the purchase and management of 150 tablets for New Haven Public School preschoolers and kindergartners.</i>	
Connecticut Bail Fund	\$40,000
<i>To support financial assistance for women impacted by mass incarceration.</i>	
Connecticut Center for Arts and Technology	\$40,000
<i>To provide emergency financial support for Dixwell and Newhallville families severely impacted by the COVID-19 pandemic.</i>	
Connecticut Food Bank Inc.	\$40,000
<i>To purchase food to distribute through its emergency assistance network.</i>	
Connecticut Violence Intervention Program. .	\$10,000
<i>To support the Street Outreach Workers’ connection with youth by ensuring their safety (through purchase of technology) and helping to meet basic needs.</i>	
The Connection Inc.	\$20,000
<i>To support deep cleaning of residential care programs in the New Haven area, as well as hazard pay for staff.</i>	
Continuum of Care Inc.	\$40,000
<i>To support the purchase of food, cleaning supplies and personal protective equipment.</i>	
CTCORE-Organize Now!	\$20,000
<i>To provide mutual aid food assistance to households in New Haven.</i>	

The Greater New Haven COVID-19 Community Fund was established on March 20, 2020 by a partnership between The Community Foundation for Greater New Haven and United Way of Greater New Haven.

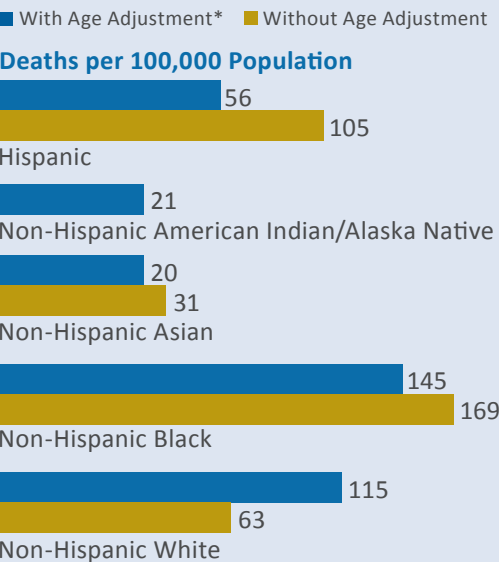
Recipient	Amount
-----------	--------

CT Students for a Dream	\$30,000
<i>To support groceries, utilities and rent for undocumented and immigrant youth and their families; as well as mental health support for youth and online programming.</i>	
Davenport Residence.	\$5,000
<i>To support the purchase of food for Davenport Dunbar Food Pantry which serves low-income senior.</i>	
East Haven Food Pantry at Epiphany Church of Christ.	\$3,500
<i>To support the purchase of additional food for the grab and go pantry.</i>	
EIR Urban Youth Boxing	\$30,000
<i>To support personal protective equipment, staffing and operational costs of reopening its recreational program to low income New Haven children providing mentorship and educational support.</i>	
Elena’s Light	\$5,000
<i>To support mask production and educational initiatives for refugee and immigrant community members.</i>	
Elm City Internationals.	\$5,000
<i>To support staffing of the academic and athletic programs for immigrant and refugee middle school and high school students.</i>	
FaithActs for Education	\$40,000
<i>To support the purchase of grocery store gift cards for families experiencing food insecurity and cash assistance directly to churches for direct service relief to their communities.</i>	
Family Centered Services of CT.	\$20,000
<i>To support the food pantry and other client basic needs including access to technology, personal protective equipment and sanitizing equipment for staff.</i>	
Family Re-Entry	\$12,000
<i>To support financial assistance for basic needs for clients and hazard pay for frontline workers.</i>	
The Food Garage of the Semilla Collective . . .	\$20,000
<i>To support the purchase of food for food delivery services for undocumented families.</i>	
Foundation for the Arts and Trauma Inc	\$20,000
<i>To provide virtual summer programming for middle school and high school students.</i>	
Gaylord Hospital.	\$35,000
<i>To support the purchase of a UV shoe decontamination station and Powered Air-Purifying Respirators.</i>	
Good Child Development Center	\$30,000
<i>To support the costs for staffing and personal protective equipment.</i>	
Griffin Hospital	\$20,000
<i>To support the purchase of personal protective equipment.</i>	
Guilford Interfaith Ministries Inc.	\$10,000
<i>To support the purchase of food and packaging to meet the increased demand for food.</i>	
Haven’s Harvest	\$32,000
<i>To support the provision of food storage as well as staff program costs.</i>	
Higher Heights Youth Empowerment Programs Inc.	\$15,000
<i>To support virtual college and career readiness programming for New Haven and Hamden high school and adult education students.</i>	
Inspired Communities Inc..	\$30,000
<i>To support food distribution and assistance to 4 food pantries in Newhallville/Dixwell neighborhoods.</i>	
Interfaith Volunteer Care Givers of Greater New Haven	\$2,000
<i>To support the distribution of personal protection equipment to 400 home bound elderly clients.</i>	

Recipient	Amount
-----------	--------

IRIS — Integrated Refugee & Immigrant Services	\$30,000
<i>To support the purchase of food pantry supplements, gift cards and medicine.</i>	
IRIS — Integrated Refugee & Immigrant Services	\$32,500
<i>To support rental and utility assistance as well as food, cleaning supplies and case management services for immigrants and refugees.</i>	
Jewish Federation of Greater New Haven . . .	\$20,000
<i>To support Masks for CT — an event created to get masks at no charge into the hands of Greater New Haven residents, especially those in hardest hit neighborhoods.</i>	
Jewish Family Service of Greater New Haven	\$15,000
<i>To support financial assistance for basic needs and food.</i>	
Junta for Progressive Action	\$30,000
<i>To support staffing and direct financial assistance for Latinx and undocumented families.</i>	
Kadiwaku Family Foundation	\$8,000
<i>To support the purchase of food and personal protective equipment, as well as mental health services to New Haven African refugee and immigrant residents.</i>	
Kingdom International Economic Development Corp (KIEDC)	\$5,000
<i>To support the provision of food for New Haven and Hamden families and elderly residents.</i>	

Rate of COVID-19-Associated Deaths by Race/Ethnicity



*Age adjusted rates calculated only for groups with 20+ deaths.

Source: CT Department of Public Health; Thomas, J. R. and Radelat, A. (2020, May 29). Disparities in Hispanic and black death rates much worse than previously reported. CT Mirror. Retrieved from <https://ctmirror.org>

\$2.7 Million Distributed in COVID-19 Community Fund Grants Since Inception (continued)

\$2.1 million in 2nd, 3rd & 4th rounds listed below

Recipient	Amount	Recipient	Amount
Leadership, Education and Athletics in Partnership Inc. (LEAP)	\$30,000	The New Haven Inner City Enrichment (NICE) Center	\$3,000
To support emergency food and rental assistance for at-risk New Haven families, as well as to cover limited additional costs associated with expanded outreach and case management.		To support the purchase of food for the food pantry, including fresh vegetables and dairy, as well as the purchase of hygiene products for Hill neighborhood residents.	
Leadership, Education and Athletics in Partnership Inc. (LEAP)	\$25,000	New Haven Legal Assistance Association Inc.	\$20,000
To support the provision of rental assistance, food, and technology for New Haven youth and their families.		To support legal and safety services for individuals impacted by the pandemic including victims of domestic violence, undocumented immigrants, newly unemployed, and those under threat of eviction.	
Leeway Inc.	\$6,500	New Lifestyles Transitional Housing for Women Inc. (Women’s Empowerment Resource Center) . . .	\$5,000
To support shopping and grocery services for homebound client.		To support the purchase of personal protective equipment, food and hygiene supplies, as well as to support health programming, wellness check ins and direct financial assistance for clients.	
Living Word Ministries d/b/a Vertical Church.	\$36,000	New Haven Pearls of Excellence Foundation Inc..	\$11,500
To support the purchase of food and food distribution costs.		To support the purchase of food and personal protective equipment for seniors through elderly housing facilities in the Dixwell community, and to support the purchase of personal protective equipment and the provision of health and education through food distribution efforts and children’s programing in Dixwell/Newhallville communities.	
Master’s Manna Inc.	\$5,000	New Haven Pride Center	\$20,000
To support the purchase of food and staffing costs.		To support the provision of basic needs items as well as health and mental health services to the LGBTQ+ community.	
Mary Wade Home	\$15,000	New Haven Reads.	\$15,105
To support the purchase of personal protective equipment and other equipment related to COVID-19 and to its reopening for family visits.		To support a Summer Read to Succeed program, a virtual literacy and tutoring program for children and youth.	
Milestones Behavioral Services	\$19,000	Oak Hill	\$7,520
To support the purchase of personal protection equipment, sanitization products and upgraded Zoom accounts for telehealth services.		To support the purchase of personal protective equipment and food, as well as coordination for disabled group home residents, students and veterans in the New Haven area.	
Milford Council on Aging.	\$20,000	Omega SDA Church	\$10,000
To support the purchase of food, packaging, cleaning supplies and personal protection equipment for the Mini-Lunch Program and Milford Food Bank.		To support homeless individuals temporarily housed in hotels with clothing, hygiene products and cleaning supplies, as well as supporting staff who are providing social services.	
Mount Hope Recovery Center	\$5,000	Orchard House (Medical Adult Day Center).	\$8,500
To support the purchase of food to meet the increased demand for the Food Pantry, as well as personal protective equipment for staff.		To support programming and staffing costs to ensure the health and safety of elderly clients during the pandemic.	
Music Haven Inc.	\$20,000	Pequeñas Ligas Hispanas de New Haven	\$1,000
To support the continuation of online teaching and mentoring programs into the summer and the distribution of basic needs items for its families.		To support personal protective equipment and program supplies in order for its summer athletic program to comply with COVID-19 state regulations.	
New Haven Alumnae Chapter of Delta Sigma Theta Sorority Inc.	\$25,000	Phenomenal I Am Inc.	\$10,400
To support the purchase of feminine hygiene products and personal essentials, as well as educational programming for young women served by local non-profits targeting homeless and diverse populations.		To support virtual enrichment programming and mentoring, as well as the purchase of food and basic needs essentials to youth participants and their families in the New Haven area.	
New Haven Area Mutual Aid Fund	\$20,000	Planned Parenthood of Southern New England	\$40,000
To support direct financial assistance to families to be used for food, rent or utilities.		To support hazard pay for staff providing in-person visits as well as the costs for personal protective equipment for staff and patients and for the COVID -19 testing process.	
The New Haven (CT) Chapter of Links Inc.	\$20,000	Project Access of New Haven	\$25,000
To support educational materials and technology, personal protective equipment and food assistance to inner city children and their families through a partnership with New Haven Public Schools and other organizations serving African American and other at risk commNew Haven Early Childhood Council.		To support the cost of staff so that patient appointments for urgent specialty care can be rescheduled/redirected as needed and they have access to important information about COVID-19 and their individual risk.	
To support the costs of personal protective equipment, cleaning supplies, cleaning services, educational materials and needed adjustments to ensure that New Haven early childhood education centers are meeting COVID-19 state regulations.		To support the cost of staff so that patient appointments for urgent specialty care can be rescheduled/redirected as needed and they have access to important information about COVID-19 and their individual risk.	
New Haven Ecology Project (Common Ground)	\$14,000	’r kids Family Center Inc.	\$20,000
To support the distribution of fresh food and staples to families in need, and to support the purchase of packaging, cleaning and storage supplies, as well as hand sanitizer and educational materials shared with partner organizations.		To support the purchase of technology for staff to provide remote support for foster children, birth families and foster families as well as the purchase of food for families in need.	

Recipient	Amount
’r kids Family Center Inc.	\$12,000
To support the purchase of food for families as well as the costs of cleaning staff and mentors for the after school program for girls.	
Reach Out and Read Inc.	\$6,000
To support programming and costs to adapt to state COVID-19 regulations in delivering books to area pediatricians and families.	
Read to Grow	\$15,000
To support the distribution of children’s books to families participating in the New Haven Public School summer meals program.	
Ronald McDonald House of CT Inc.	\$5,000
To support the provision of hot meals and groceries for families with children who are being treated at Yale New Haven Hospital.	
Ronald McDonald House Charities of Connecticut and Western Massachusetts	\$5,000
To support personal protective equipment, cleaning supplies and paper goods for families in residence.	
Saint Martin de Porres Academy	\$10,000
To support the purchase of personal protective equipment as well as cleaning services in preparation for reopening the school for inner city children in New Haven.	
SARAH Foundation.	\$30,000
To support the purchase of personal protection equipment for staff and residential clients.	
SARAH Inc.	\$30,000
To support the purchase of personal protective equipment and cleaning supplies to allow in-person services following state COVID-19 regulations.	
Solar Youth	\$20,000
To support jobs for youth, whose income helps their families, as well as technology to enable virtual programs.	
Southington-Cheshire Community YMCAs Inc.	\$5,000
To support emergency child care programming for hospital staff and first responders.	
Spanish Community of Wallingford	\$25,000
To support the basic needs for undocumented immigrants and under served populations in the Wallingford area.	
Square Meals New Haven / Comidas Completas New Haven.	\$40,000
To support the preparation and delivery of meals to the ~250 homeless individuals who are temporarily housed in hotels.	
St. Mary-St. Michael School	\$6,000
To support staffing and technology for virtual learning for elementary students over the summer and into the fall.	
Stratford Visiting Nurse Association.	\$5,000
To support medical supplies for nursing staff.	
The Storehouse Project Inc.	\$25,000
To support the cost of refrigeration and the purchase food.	
Students for Educational Justice (SEJ)	\$20,000
To support leadership development and political and social justice education over the summer to a diverse student population in Greater New Haven, including stipends, personal protective equipment and financial assistance to meet basic needs.	
Sunrise Café	\$10,000
To support the purchase of food and supplies, and to support staffing and rent in order to supply get-to-go meals.	
unities.	
Thomas Chapel Church of Christ, Disciples of Christ.	\$5,000
To support the provision of financial assistance, food and personal protective equipment for food pantry clients, and to cover needed cleaning of the facility.	

Recipient	Amount
The Towers Foundation	\$30,000
To support meals basic needs supplies for seniors who are sheltering in place.	
Ulbrich Boys & Girls Club.	\$15,000
To support virtual programming and the costs of personal protective equipment, staffing and program supplies for summer camp programming for North Haven and Wallingford youth.	
Unidad Latina Accion	\$20,000
To support the Immigrant Emergency Fund which provides cash assistance to immigrants ineligible for unemployment and stimulus funds.	
The UNITE HERE Education and Support Fund. .	\$20,000
To support direct financial assistance for members.	
Urban Community Alliance Inc.	\$14,000
To support case management, tutoring and staffing, in partnership with Higher Heights, to juniors and seniors from New Haven and Hamden.	
VNA Community Healthcare.	\$25,000
To support the increased demand for emergency supplies for staff and clients.	
Walk of Faith Church	\$5,000
To support the purchase of food and personal protection equipment for families in the Fair Haven Heights neighborhood.	
Walk Of Faith Church, COCDOC	\$8,000
To support the purchase of food and cleaning supplies, as well as transportation and operational costs for the weekly community food pantry.	
Weruche Inspires, International Inc.	\$2,700
To support food and technology to meet the basic needs of African immigrant seniors.	
WLM Ministries Inc.	\$24,000
To support the provision of social and emotional support to the Black community impacted by COVID-19, specifically in New Haven neighborhoods.	
Yale New Haven Hospital.	\$25,000
To support the purchase of personal protective equipment as well as meals and counseling for staff.	
Yale University	\$40,000
To support the Community Health Care Van which will provide essential neighborhood-based medical care for newborn infants and their post-partum mothers residing in areas shown to be of high COVID-19 burden and for low-income communities with poor access to care.	

According to a New Haven Pride Center survey, 59% of LGBTQ+ New Haven County respondents said they were already experiencing or approaching food insecurity as a result of COVID-19.

Nearly \$3 Million in General Operating Support Grants Awarded in May (continued)
Responsive multi-year grant decisions accelerated by two months; more than \$1.2 million for 2020

Recipient	Amount
Jewish Federation of Greater New Haven	\$95,000
For community-wide programming that helps people in need in Greater New Haven, as well as nurtures and sustains programs that enrich the local community.	
Leadership, Education and Athletics in Partnership Inc. (LEAP)	\$105,000
For year round, community-based programs designed to achieve positive academic and social outcomes for children living in high poverty urban neighborhoods in New Haven.	
Leeway.	\$125,000
For inpatient rehabilitative and palliative care for Greater New Haven residents living with HIV/AIDS.	
Literacy Volunteers of Greater New Haven	\$90,000
For adult literacy tutoring in Greater New Haven and the Valley.	
Massaro Community Farm	\$5,600
To maintain a historic farm using organic practices, to provide fresh produce to the needy, and to build community through farm-based education and events.	
New Haven Ecology Project	\$80,000
For a public charter school, an environmental education center and an urban farm.	
New Haven HomeOwnership Center	\$75,000
For home buyer education and financial assistance to individuals and families who are purchasing homes to stabilize and revitalize Greater New Haven neighborhoods through increased homeownership.	
New Haven Reads	\$100,000
For the promotion of literacy through tutoring, family engagement, college preparation and a free book bank.	
New Haven Symphony Orchestra	\$65,000
For live performances of classical music and music education programs.	
Orchard House	\$95,000
For care and medical supervision to adults with cognitive impairments, chronic illness, or other disabilities enabling them to age at home.	
Pequeñas Ligas Hispanas de New Haven Inc.	\$75,000
For athletic, artistic, educational, social, cultural and health programming for Latino children and families.	
Public Allies Connecticut	\$70,000
For leadership development programs that advance the skills, networks and work experiences of individuals while increasing the capacity of nonprofit organizations. Regional Youth Adult Social Action Partnership is acting as the fiscal sponsor.	
’r kids Family Center Inc.	\$115,000
For services to children and families in transition and to promote permanency, safety and stability for children by providing nurturing services to biological, foster, adoptive and relative care families.	
Urban Community Alliance	\$145,000
To foster family well-being by strengthening parent's ability to provide healthy nurturing environments for their children.	
West Haven Child Development Center.	\$60,000
For early care and education programming.	
Women and Family Life Center.	\$90,000
For access for women and families to strong networks of support, education and community to make life transitions a time of positive change during a time of isolation, fear and financial distress.	
Yoga4Change Inc.	\$10,000
For the cultivation of resilience and life success through the health and wellness benefits of mindfulness and yoga.	
Youth Continuum Inc.	\$180,000
For programming that prevents and addresses youth homelessness.	

Nearly \$3 Million in General Operating Support Grants Awarded in May

Responsive multi-year grant decisions accelerated by two months; more than \$1.2 million for 2020

Recipient	Amount
-----------	--------

All Our Kin Inc. \$90,000
To train, support, and sustain community child care providers in Greater New Haven to ensure that children and families have the foundation they need to succeed in school and in life.

Amity Teen Center Inc. \$30,000
To increase programming for teens in Bethany, Orange and Woodbridge.

Animal Haven \$70,000
To shelter homeless, adoptable cats and dogs and to subsequently place these animals in quality, adoptive, permanent homes.

Arts Council of Greater New Haven \$70,000
To promote, advocate and foster opportunities for artists, arts organizations and audiences.

Beth-El Center Inc. \$90,000
For homeless shelter, support services, advocacy and community education.

Bridges Healthcare Inc. \$120,000
For a comprehensive range of prevention, mental health and addiction recovery programs for adults, children and families.

CitySeed Inc. \$45,000
For a local food system that promotes economic development, community development and sustainable agriculture.

Clifford W. Beers Guidance Clinic \$90,000
For integrated services addressing mental, physical and social determinants in order to improve health, resiliency, and a quality of life for children, families and communities.

Columbus House Inc. \$155,000
To provide general operating support to serve people who are homeless or at risk of becoming homeless by providing shelter/housing, and fostering personal growth and independence.

Community Soup Kitchen \$75,000
For free, nutritious meals for poor and underprivileged residents of New Haven.

Connecticut Association for the Performing Arts (CAPA). \$75,000
For international, national and local live performances as well as performing arts education.

Connecticut Veterans Legal Center \$95,000
To help veterans recovering from homelessness and mental illness overcome legal barriers to housing, healthcare and income.

Continuum of Care Inc. \$50,000
To help individuals who are challenged with mental illnesses, intellectual disabilities and/or struggling with addiction live productive lives.

Downtown Evening Soup Kitchen Inc. \$95,000
For free, nutritious meals for homeless individuals and families, and the working and non-working poor of the Greater New Haven area.

Elm Shakespeare Company \$50,000
For free and accessible live theater productions and educational experiences in New Haven parks, classrooms, and neighborhoods.

Guilford Art Center \$75,000
For arts educational programming, exhibitions and outreach for Shoreline residents.

Habitat for Humanity of Greater New Haven \$50,000
For the creation of homeownership opportunities for low-income families.

Higher Heights Youth Empowerment Programs Inc. \$75,000
For the provision of college access and preparation services to high school students and their families.

(continued on reverse of flap)

Thank You Donors to the Greater New Haven COVID-19 Community Fund

Anonymous (50)
Joseph Addison
Melvin Aden
Tanya Allen
Karen Anderson, Sunrise New Haven
Anne Hope Bennett Fund
Rick & Nancy Antle
Holly Antolini
Robin Appel
Diane Fried Arikier & Walter H. Arikier Fund
Lynn Aubin
August Family Fund
Autumn Fund
Stephanie Avallone
Marion Avitable
Craig Bailey
Paul & Joanne Bailey
Charles Bailyn
Stephanie Barnes
Sarbani Basu
Bill & Donna Batsford
Richard & Alice Baxter Fund
Be Just Fund at Tides
Dave Bechtel
Benjamin Bechtolsheim & Caroline Scanlan
Nancy Berliner & Alan Plattus
Brittney Berrios
Deapon Bhaumik
Nancy Bianchi
Patricia Bogie
Mary Ann & Geof Bonenberger
Yarden Bornovski
Melanie Boyd
Robert J. & Kathleen G. Bradley
Dawn Brancati
Matt Branam
Thomas Breen
Cynthia Brenner
Amy Brewer
Charlene Brown
Dr. Khalilah L. Brown-Dean
Maz Burbank
Carmen Burgos
Linda Burt
Cacopardo Family
Drs. Chris & Penny Canny
Lincoln Caplan & Susan Carney
Sharon Cappetta
Cara — RTS
Carolyn Foundation
Arnold & Carolyn Cary
Madeline Case
Castro and Eang

Daniel Chabeda
Nathan Chang
Maximilian Chaoulideer
Henry Chauncey Jr.
Chdlsea Company
Yanmei Chen
Jeanne Chesanow
Judith Chevalier
Kellie & Scott Choquette
Christina & Tony Ciociola
Jan Clarke
Constance Clement
Kevin & Roxanne Coady
Brad Collins & Nancy Clayton
Jane Coppock
Katha & John Cox
Stephen Cremin-Endes
Craig Crews & Katherine McKenzie
Critical Public Health Fund
David & Vicki Crompton
John Moore Crossey
Angela A. Crowley
Nancy Crowther
Rich & Katarina Curtis
Dr. Armine Darbinyan
DellaValle
Victoria DiSesa
Lise & Bill Dondy-Kaplan
Michelle Dover
Anastasia Eccles
Annie Eccleston
Eder Family Foundation Inc.
Lazaros Efthymiou
Rev. Nathan & Mrs. Diana Empsall
ERJ Fund
Mark & Linda Estacion
Marie T. Falsey Fund

Dr. Crystal Feimster
Fellows Family Fund
Fidelity Charitable Gift Fund
Emily Fine
A&E Fisher Fund
Renee B. Fisher Foundation Fund
Steve Fontana
Mary Ann Frank
Dr. Kealoha Freidenburg
Julia Friend
Karyn Gallagher
Wendy Gamba
Liana Garcia
Andrew Giering
Ginsberg Family Fund
Glatt Family
Lindy Lee Gold
Linda Goodman
Israel & Adele Gordon Fund
Joseph W. Gordon & Mark Bauer
A. Gottlieb (RTS)
Donna Grajauskas
Vincent Granata
William C. Graustein
Geoffrey Gregory
Robert Gribbon
Stephen Hamm
Connor Hann
Rich Hayden
Hayes Foundation
Health Services Fund
Scott Healy
Rachel Heerema



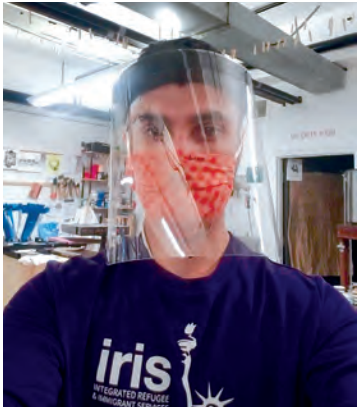
Photo courtesy of Jewish Federation of Greater New Haven

Megan Heinisch
Dr. Sloane Heller & Harris Eppsteiner
Caroline Hendel & John Wysolmerski
Paul & Kathleen Hermes Fund
Caroline Herrick
Leigh & Leslie Higgins
Hillary
Sidney Hirschman
Ted Hixson
Nina R. Horowitz & Richard A. Sussman
Family Fund
Jim Horwitz & Sandy Allison
Zhenyi Hu
Steven Inglese
Kavita Israni-Winger
Eric Jacobs
JPMorgan Chase & Co.
Judith & Nathan Janette
Jewish Foundation of Greater New Haven
JMS Foundation

“I wish I could do more.”

Emma Johnson
Roger & Ruth Johnson
JPMorgan Chase & Co.
Judy Fund
Jen Just
Dr. Angela Kang
Kantor-Flanagan Family Giving Fund
Lisa Kaston
Margit Kaye
Dr. Danya Keene
David Keiser
Laura Kennedy
KeyBank in partnership with the First Niagara Foundation
Carol Kim / Ranfone Training Systems
Patrice & Donald Kirshbaum
Karen Kleinerman
Beth E. Klingher
Carolyn Salsgiver Kobsa
Acadia Kocher
Jane Kovel
Diane Krause Charitable Fund
Robert P. & Bonnie B. Kreitler
Kreutter Family Fund
Michael Lachowicz
Carole C. LaMotte
Landes Memorial Fund for the Arts
Dr. Richard B. Larson
Dr. James Leckman
Mary Lesser
Arthur & Betty Levy Fund
Xiuling Li
Lil Liberman
Andrea L. Livolsi
Dr. Yuri Londer

Photo courtesy of MakeHaven



“I’m inspired by all of the everyday heroes who courageously serve our neighbors most in need, and I am impressed by the urgency of now to make real and consequential difference. And I trust CFGNH to steward resources responsibly and effectively. That’s why I give.”

Nomi Lubin
Robert Lyons, Jr.
Craig Machado
Terry & Martha Maguire
Judith Malamut
William & Janet Maley Jr.
Rebecca Mandell
Sven Martson
Jeanne McFarland
Medoff Giving Fund
Lisa Mendes
Venu Menon
Roz & Jerry Meyer
Spencer & Joanna Meyer
William H. & Irene K. Miller
Charitable Account
George W. Mixter Fund
Bill & Julie Moore

Pikaart-Vaughan Family Fund
Sarah Pillsbury
Possum Fund
Angela G. Powers
William Powers
Melissa Promuto
Ranfone Training System
Hannah Rappaport
Brendan Reilly
Resch Family Fund
Jennifer Richeson
Susanne Roberts
Felicia Romano
Seth Rosen
Judy Sirota Rosenthal
Sheilah Rostow
Rozett Family Fund
Leah Russell

Dr. Michael Stankewich
Lisa Stanger & Greg Colodner
Elisabeth Stenger
Louis & Susan Stone Family Fund
Dara Strolowitch
Meaghan Sullivan
Leo T.
Timken Foundation
Tomak Family
Dr. Jasmine Travers
Meghan Tuttle
UI, SCG & CNG — part of the Avangrid Family
United Way of Greater New Haven
Upper State Street Association Inc.
Mr. & Mrs. James Urbano
Marne Usher
Vanguard Charitable Endowment Program
Erica Veronesi
Vigs
John Charles & Diana Seton Wakerley Fund
Jolyn Washington Walker
Mary Kimbrough Webb Fund
Lianhuan Wei
James Weiner
Noah Weingart
Derek & Morgan Weiss
Family Charitable Fund
Susan Weisselberg
Glenn & Dotty Weston-Murphy
Sam Whiteley
Whitneyville United Church of Christ
Suzanne Whitty & Andrew Zehner
Wilbur Fund
Leshea Wilson
Andrew Wingate
Deanne H. & Herbert S. Winokur Jr. Fund
Mary Woolsey
Deborah Wright
Wenjin Xue
Zdru Family Fund
Lin Zhang
Mengwen Zhang
Hongyu Zhao & Ning Sun
Michael Ziskin
Richard Zubek

as of 6/11/2020

Lily Morse
Fernando J. Muñiz
Charles Murphy
Bracken Murphy
Megan Murphy
Scripps Family Fund for Education and the Arts
Ben Muskin
Dr. Kathryn Nagel & Matthew Kingsbury
Paul Neri
Netter Foundation Inc.
New Haven Terminal
New Ways Fund
Lisa Newfield
Newton Family Fund
Dr. Marcella Nuñez-Smith
Courtney Nunley
Nicholas D. Ohly & Sara Huntington Ohly Fund
Anne Olcott
Steve Ongley
Orchard Foundation
Sara Elizabeth O’Connor Fund
David O’Sullivan
Palitz Family Fund
Helen L. Palmer
“Spirit of the Foundation” Fund
Aine Palmer
The Pandolfi Family
Daniel Par dy & Gerald Saladyga
Cynthia M. Parker Fund
Karin Patriquin
Peace & Social Justice Fund
Hilary G. Pearson
People’s United Community Foundation
Gregory & Ann Pepe
Julie Perlman
Dana Peters
Caitlin Phillips
Keith Phillips

Jane Sarja
Stephen A. Saxe
Amy Schlank
Hon. Chris Schuck
Schwab Charitable Fund
Scripps Family Fund for Education and the Arts
Barbara Segaloff
Chelsea & ‘B’ito Serenbetz
Louis & Joan M. Sirico Fund
Skye Foundation Fund
Cheryl Smith
Rita & Ray Smith Fund for Strong Families
Ben Soltoff
Anne Sommer
Anne Sommer & David Rabinowitz
Wenzhi Song
Staff of the Surgical ICU at YNNH
St. Raphael Campus Kirby Stafford
Mary Stahley

“The COVID-19 Community Fund is a great idea and service to the community.”

GREATER NEW HAVEN COVID-19 COMMUNITY FUND

A COMMUNITY-WIDE EFFORT

Make a gift at
cfgnh.org/covid19fund

Donor Advisors Rise to the Occasion: Over \$1.7 Million Distributed

“...these funds deeply rooted in their communities are analogous to having hundreds, if not thousands, of local foundations...”

Terry Mazany, senior vice president for philanthropy at the Community Foundation for Greater Atlanta and former CEO of the Chicago Community Trust

A March *Chronicle of Philanthropy* article explained the critical role donor-advised funds play during times of fiscal stress, “as the philanthropic capital reserve in communities across the United States. In today’s

circumstances, these funds deeply rooted in their communities are analogous to having hundreds, if not thousands, of local foundations available for support of the projected torrent of emergency needs.” The donor advised funds at The Community Foundation (TCF) and its philanthropic partner the Valley Community Foundation (VCF) are no exception. Between March and May, donor advisors transferred much needed funds directly to the COVID-19 community funds established at the two foundations to get resources rapidly to those most impacted by COVID-19. They also supported local nonprofits directly and increased their participation in The Great Give® by 50%.

In addition, The Foundation accelerated the distribution of \$1 million in designated fund grants in April.

The Valley’s Response to COVID-19: Decisive and Direct

In March, representatives from Valley Community Foundation (VCF), Valley United Way, Greater Valley Chamber of Commerce, and the Valley Council of Health & Human Services joined forces to rapidly deploy resources to organizations supporting people in the Valley Region most significantly affected by the COVID-19 pandemic. The collaboration produced the Valley Community COVID-19 Response and Recovery Fund (The Fund), which as of publication has distributed nearly \$150,000 in aid to 40 nonprofits. Many of the grants have been for personal protective equipment and operational support for telehealth, virtual wellness, and remote access programming for organizations with staff working on the front lines of the COVID-19 pandemic.

“There is still a long road ahead of us in terms of how the Valley is able to come through these challenging times in a way that is stronger and more unified than before.”

Sharon Closius, VCF President and CEO

Sharon Closius, VCF President and CEO, is grateful for all the early contributors and entreats Valley supporters to help continue to grow resources for the Valley’s relief and recovery.

To further help Valley residents, VCF has changed the priorities of its Needs and Opportunities grant process to give priority to requests directly related to modifications made as a result of the crisis.

Businesses and individuals looking to make an impact are encouraged to donate at www.valleyfoundation.org to help the Valley rebound from the pandemic. Gifts via credit card are strongly preferred over checks to reduce processing time.

Small Business Loan Program Launching for New Haven & Valley Neighborhoods

The Foundation through its Mission Investment Company (TCF-MIC), the City of New Haven, the Amour Propre Fund and HEDCO are pleased to announce a small business loan program to provide financial relief to small businesses that have experienced an adverse financial impact and economic injury due to the COVID-19 pandemic. The aforementioned partners supporting this program have made an initial commitment of \$1.5 million. The focus and priority of this loan program are to assist small, minority and women-owned businesses located in New Haven and the lower Naugatuck Valley (priority for Derby and Ansonia) that have been adversely and disproportionately impacted by COVID-19, and that either do not qualify or have been unable to access other resources provided by the federal or state government. Loans up to \$25,000 will be available. The new program is a major step forward in the implementation of The Foundation’s vision for TCF-MIC as an entity that helps broaden and deepen relationships in our community — a core objective for The Foundation over the next 5 years. More information will be available in the coming weeks on The Foundation’s website at www.cfgnh.org/sblp.



Photo iStock / Chery Targonsky

Donor Briefings, Nonprofit Workshops and Payments Go Digital

Since mid-March, five Virtual Donor briefings have taken place providing information about The Foundation’s responses to COVID-19, Greater New Haven’s COVID-19 Community Fund, the work happening to address food insecurity, the racial and ethnic disparities and mental health concerns of the COVID-19 pandemic. In addition, more than 400 nonprofit personnel have been aided by 14 virtual workshops on topics such as self-care and guided meditation. A series on how to power through COVID-19 offered resources and a road map relative to how to survive and eventually emerge stronger than ever.

Feedback has been positive, including these messages:

“Thank you so much for recognizing how much this topic is needed, and for all the great work you are doing. It is appreciated.”

“[The presenter] has great suggestions and that are implementable, great visuals and examples, lovely presentation manner.”

Finally, The Foundation has gone digital for grant and vendor payments and processed a 54% / \$5 million increase in grants this April, compared to the same time last year.