

DataHaven
The Thirtieth Year



2023 Community Wellbeing Index

Get the reports: ctdatahaven.org/reports

May 31, 2023

Mark Abraham, MPH, Executive Director
Kelly Davila, MS, Senior Research Associate
Camille Seaberry, MS, Senior Research Associate

2023 Community Wellbeing Index

DataHaven Greater New Haven Community Wellbeing Index

2

3

Visual Appendix

43 figures, 33 tables, 1 report – here's a preview of what we learned about Greater New Haven

CHAPTER 1 Introduction and Community Index

FIGURE 1A COMMUNITY INDEX SCORES VARY BY TOWN WITHIN GREATER NEW HAVEN PG 5



FIGURE 1B PERSONAL WELL-BEING TRENDS TO IMPROVE WITH OVERALL COMMUNITY WELL-BEING PG 13



FIGURE 1C WITHIN DEMOGRAPHIC GROUPS, LIFE SATISFACTION OFTEN VARIES BY INCOME PG 11



FIGURE 1D MANY POSITIVE EXPERIENCES AND RESOURCES, INCLUDING HAVING A HIGH INCOME, CORRESPOND TO HIGHER LIFE SATISFACTION PG 11



CHAPTER 2 Population

FIGURE 2A SINCE 1980, THE REGION HAS DIVERSIFIED GREATLY PG 14

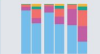


FIGURE 2B YOUNGER GENERATIONS ARE MUCH MORE RACIALLY DIVERSE THAN OLDER ONES PG 15

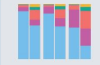


FIGURE 2C WHITE RESIDENTS ARE OVER 3 TIMES MORE LIKELY TO LIVE IN HIGH-INCOME OR AFFLUENT NEIGHBORHOODS THAN BLACK AND LATINO RESIDENTS PG 15



FIGURE 2D THE MAJORITY OF NEW HAVEN'S HOUSEHOLDS ARE NONFAMILY HOUSEHOLDS PG 16



FIGURE 2E GREATER NEW HAVEN'S FOREIGN-BORN POPULATION HAS BEEN CHANGING OVER TIME PG 17



FIGURE 2F VERY FEW NEIGHBORHOODS HAVE BOTH HIGH INCOMES AND HIGH LEVELS OF DIVERSITY PG 18



FIGURE 2G UNLIKE OTHER GROUPS, WHITE RESIDENTS MOSTLY LIVE IN OTHER WHITE PEOPLE PG 19



CHAPTER 3 Economic Security

FIGURE 3A MEDIAN INCOMES HAVE RISEN STEEPLY IN HIGHER-INCOME TOWNS PG 22

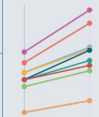


FIGURE 3B FEMALE HOUSEHOLDERS UNDER AGE 25 HAVE THE HIGHEST POVERTY RATE PG 23



FIGURE 3C AS PANDEMIC RELIEF PROGRAMS FAZE, BLACK AND LATINO ADULTS AND ADULTS WHO LIVE WITH CHILDREN ARE HIT HARDEST BY FOOD INSECURITY PG 24



FIGURE 3D UNLIKE OTHER GROUPS, WHITE RESIDENTS MOSTLY LIVE IN OTHER WHITE PEOPLE PG 19



FIGURE 3E HIGHER SHARES OF BLACK AND LATINO HOUSEHOLDS DO NOT HAVE ACCESS TO A VEHICLE PG 25



FIGURE 3F RESIDENTS OF MAJORITY NON-WHITE NEIGHBORHOODS ARE MORE LIKELY TO HAVE DEBT IN COLLECTIONS PG 27



CHAPTER 4 Housing

FIGURE 4A HOUSING VALUES HAVE RISEN SUBSTANTIALLY BY RACE PG 30



FIGURE 4B BLACK AND LATINO MORTGAGE APPLICANTS HAVE HIGHER REJECTION RATES PG 31



FIGURE 4C HIGHER-INCOME HOUSEHOLDS ARE MORE LIKELY TO OWN THEIR HOMES PG 33



FIGURE 4D HIGH SHARES OF BLACK AND LATINO RENTERS ARE BURDENED BY HOUSING COSTS PG 33



FIGURE 4E TOWNS IN THE OUTER RING SUBURBS HAVE THE HIGHEST AVERAGE HOUSING VALUES PG 34



FIGURE 4F SINCE THE EVICTION MORATORIUM WAS LIFTED, MONTHLY FILINGS HAVE SURPASSED PRE-PANDEMIC LEVELS PG 36



FIGURE 4G EVEN THOUGH EDUCATORS HAVE DIVERSIFIED IN RECENT YEARS, TEACHERS OF COLOR ARE STILL VASTLY UNDERREPRESENTED COMPARED TO THEIR STUDENTS PG 44



FIGURE 4H MULTI-FAMILY HOUSING MAKEUP A RISING SHARE OF CONSTRUCTION PERMITS PG 37



FIGURE 4I SINCE THE START OF THE COVID-19 PANDEMIC, CHRONIC ABSENTEEISM HAS SKYROCKETED PG 41



FIGURE 5A STANDARDIZED TEST SCORES HAVE DROPPED FROM PRE-COVID AVERAGES PG 41



FIGURE 5B SIX YEARS AFTER GRADUATING HIGH SCHOOL, ONLY HALF OF GREATER NEW HAVEN PUBLIC SCHOOL STUDENTS HAVE A COLLEGE DEGREE PG 42



FIGURE 5C ABOUT A QUARTER OF LATINO ADULTS IN THE AREA LACK A HIGH SCHOOL DIPLOMA PG 51



FIGURE 5D WHILE THE GENDER-EDUCATION GAP AMONG YOUNG ADULTS HAS CLOSED, RACIAL AND ETHNIC DISPARITIES PERSIST PG 53



FIGURE 5E WIDE WAGE GAPS EXIST BY SEX AND RACE/ETHNICITY, EVEN WITHIN OCCUPATIONAL GROUPS PG 48



FIGURE 5F WAGE GAPS ARE LARGER BY RACE/ETHNICITY THAN BY SEX PG 49



FIGURE 5G ACROSS SEVERAL OCCUPATION GROUPS, WAGE GAPS BETWEEN MEN AND WOMEN ARE HIGHER WITH ADVANCED DEGREES PG 50



FIGURE 5H ALL-CAUSE MORTALITY SPIKED IN 2020 DUE TO THE COVID-19 PANDEMIC PG 63



FIGURE 5I SEVERAL GREATER NEW HAVEN TOWNS HAVE HIGH BURDENS OF PREMATURE DEATH PG 63



FIGURE 5J WEALTHIER TOWNS NET MORE INCOME FROM PROPERTY VALUES AND OFTEN SPEND MORE ON LIBRARIES AND EDUCATION PG 74



FIGURE 5K MORTALITY DUE TO COVID-19 WAS HIGHER FOR RESIDENTS OF COLOR THAN WHITE RESIDENTS PG 64



FIGURE 5L DRUG OVERDOSE DEATHS HAVE RISEN STEEPLY PG 65



FIGURE 5M IN SOME NEIGHBORHOODS, MORE THAN 1 IN 50 RESIDENTS ARE INCARCERATED AND COUNTED AS LIVING ELSEWHERE PG 77



FIGURE 5N BLACK RESIDENTS MAKE UP A LARGER SHARE OF DRIVERS SEARCHED BY POLICE THAN THEIR SHARE OF THE POPULATION PG 78



FIGURE 5O HOSPITAL ENCOUNTER RATES HAVE INCREASED FROM 2016 TO 2020 AMONG ALL DEMOGRAPHIC GROUPS IN CONNECTICUT, ESPECIALLY AMONG YOUNG PEOPLE AND PEOPLE OF COLOR PG 69



FIGURE 5P BLACK RESIDENTS MAKE UP A LARGER SHARE OF DRIVERS SEARCHED BY POLICE THAN THEIR SHARE OF THE POPULATION PG 78



FIGURE 5Q WAGE GAPS ARE LARGER BY RACE/ETHNICITY THAN BY SEX PG 49



FIGURE 5R WAGE GAPS ARE LARGER BY RACE/ETHNICITY THAN BY SEX PG 49



Contents

1	Introduction and Community Index	4	5	Youth and Education	38
	Foreword	4		Early Childhood	39
	About This Document	5		Public Education	39
	Measuring How Communities Shape Well-Being	5		Higher Education	42
	Connecticut Rankings	6		Youth Opportunity	43
	DataHaven Community Index	6		Focus: School Segregation and Diversity	44
	Scores for Local Areas	6			
	Personal Wellbeing Index	10			
	Life Satisfaction	11			
2	Population	12	6	Economy	46
	Population Change	13		Jobs	47
	Households	16		Wages	49
	Immigration	16		Educational Attainment	51
	Focus: Segregation	19			
3	Economic Security	20	7	Health	54
	Economic Security and Well-Being	21		Barriers to Healthcare	55
	Income	22		Weather, Climate, and Public Safety	57
	Poverty	23		Health Risks	58
	Food Security	24		Maternal and Infant Health	60
	Transportation	25		Child Health	61
	Internet Access	25		Chronic Conditions	61
	Wealth	27		Mortality	62
				Mental Health and Suicide	66
				Focus: Road Safety	67
4	Housing	28	8	Civic Life	68
	Housing and Well-Being	29		Civic Engagement	69
	Homeownership	30		Institutional Trust	70
	Housing Affordability	32		Community Satisfaction	72
	Evictions	35		Municipal Spending and	73
	Housing Supply	37		Community Assets	
				Policing and Criminal Justice	76
				Incarceration	76
				Focus: Police Stops	79
9	Conclusion and Endnotes	80			



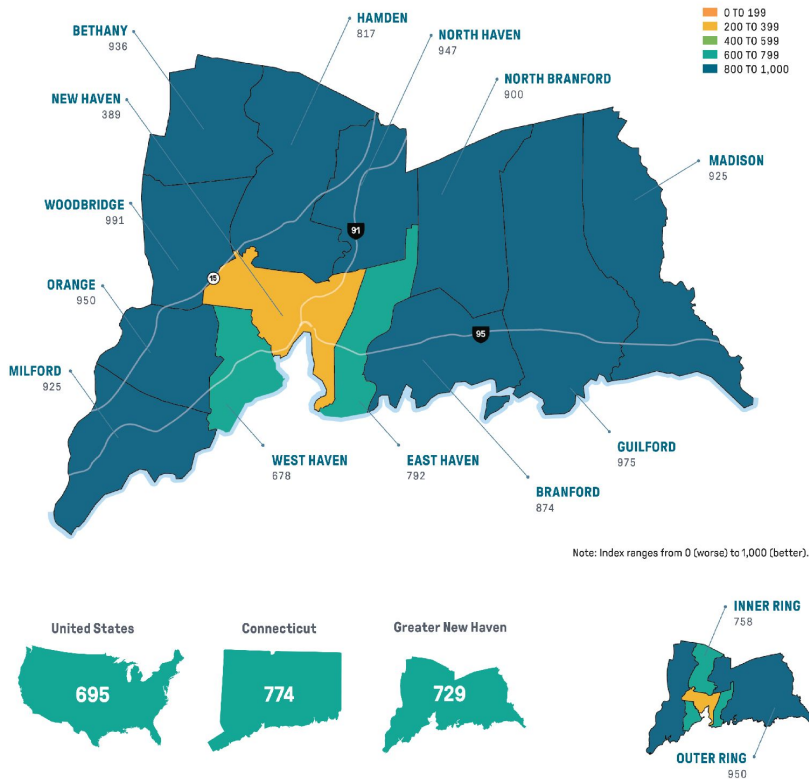
DataHaven
The Thirtieth Year

Greater New Haven

- Data are collected statewide, but for the Greater New Haven Community Wellbeing Index, the region is defined as a 13-town area
- A diverse range of urban, suburban, and rural communities shaped by many important factors such as industrialization, immigration, migration, highway expansions, redlining and discrimination

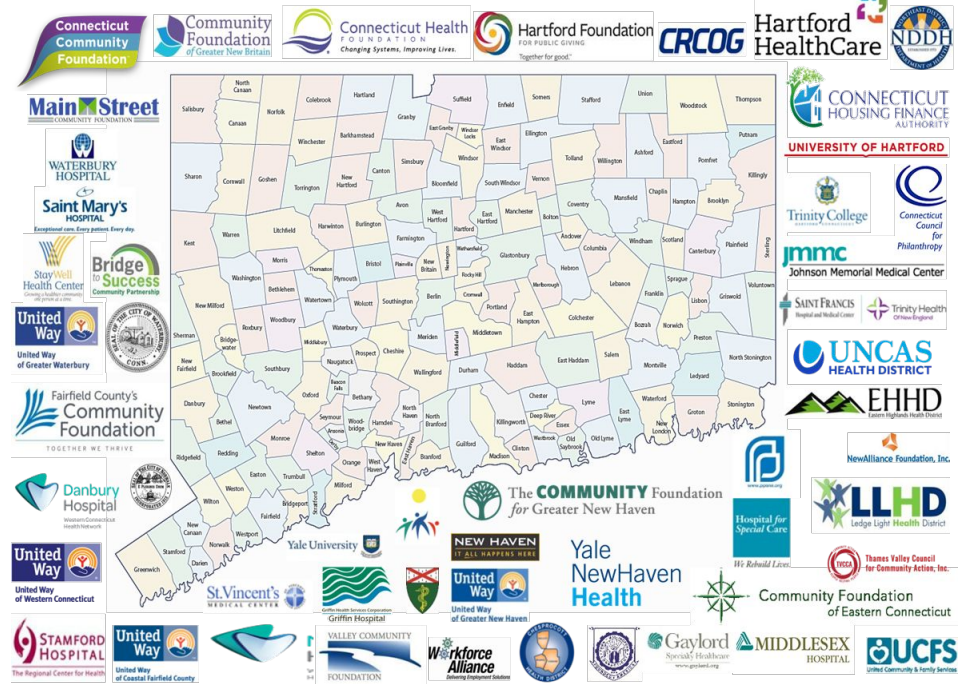
FIGURE 1A

Community Index scores vary by town within Greater New Haven
INDEX SCORE BY TOWN, 2020



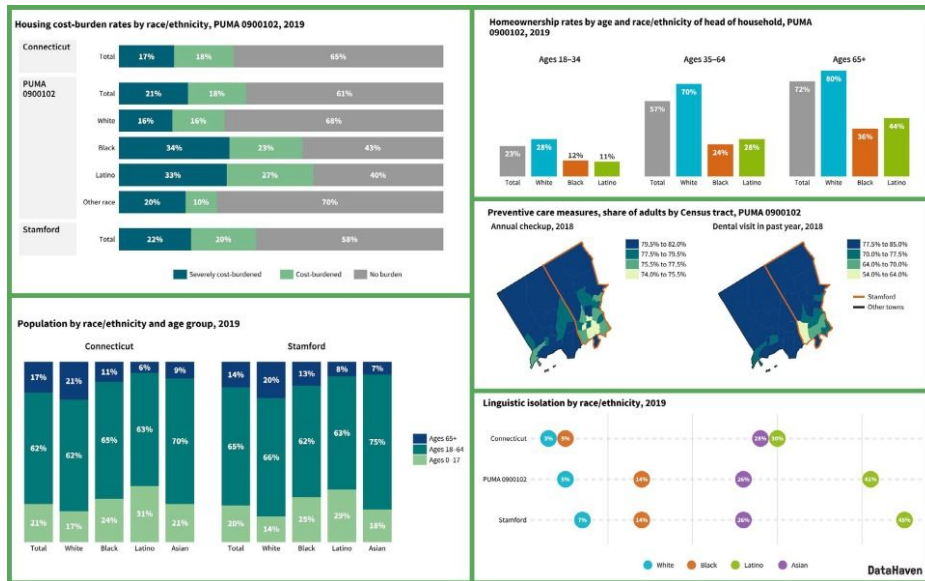
DataHaven Community Wellbeing Survey

- Data from live interviews of over 40,000 randomly-selected adults are one of the sources used throughout the Index
- Over 80 partners support the survey
- Survey data are prominently used in dozens of community health assessments statewide



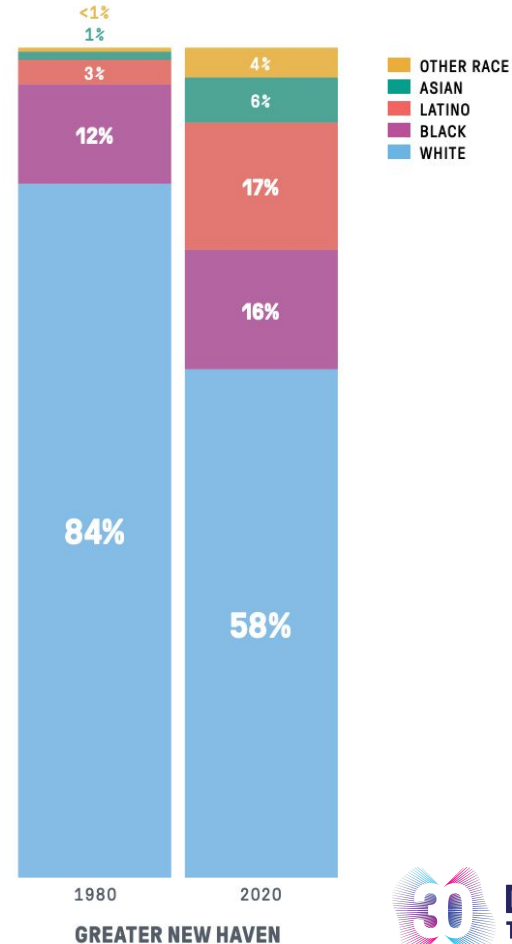
DataHaven Town Equity Reports

In addition to the Community Wellbeing Index, survey and more data for all 169 Connecticut towns at ctdatahaven.org/connecticut-town-equity-reports



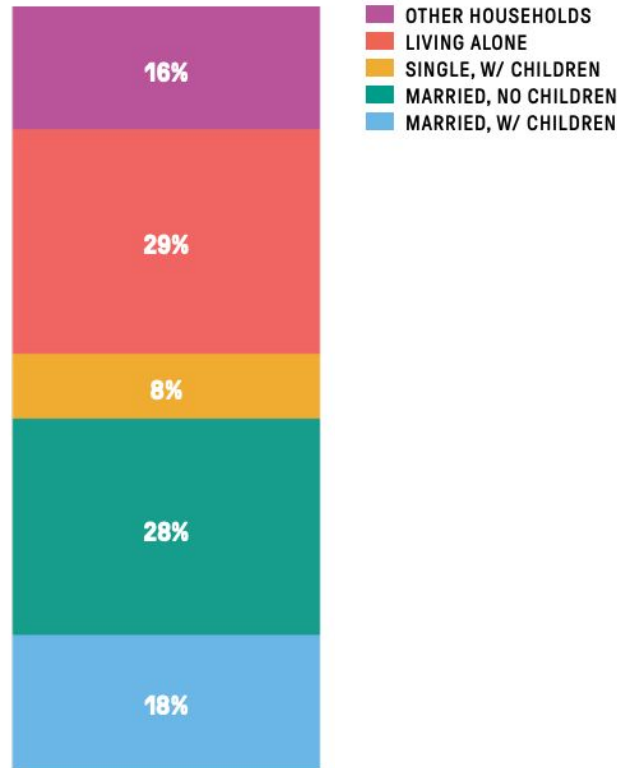
Population and Demographics

- State and GNH population increasingly diverse, especially among younger generations
- Latinos are fastest growing racial/ethnic group since 1980
- **14 percent** of GNH population is foreign-born
- Largest share of immigrants who entered in 2010 or later are from **Asia** (46 percent).



Population and Demographics

- Population grew by **0.3 percent** while total households grew by **2 percent** in GNH between 2010 and 2020.
- New Haven grew at **3 percent** and remains one of the fastest growing cities in the state
- Nonfamily households grew the most, especially **single-person households**.
- Nonfamily households are most likely to be **renters**.



GREATER HARTFORD

Family Resources and Financial Wellbeing

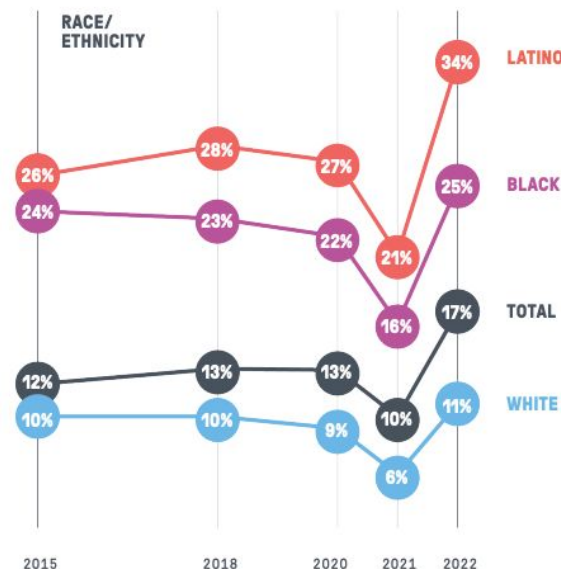
Indicator	Connecticut	Greater New Haven
Limited car access	10%	14%
HH earning <\$50K without broadband internet	28%	25%
Childcare slots as a share of child pop.	--	38%
Just getting by financially	26%	26%
Negative net worth	14%	16%
Underemployed	16%	15%
Difficulty paying for food	11%	13%

Macroeconomic Effects

- Pandemic relief programs provided a short reprieve from food insecurity, which is now higher than pre-pandemic levels
- Inflation led to a **13 percent increase** in the cost of groceries between 2021 and 2022

As pandemic relief programs fade, Black and Latino adults and adults who live with children are hit hard by food insecurity

SHARE OF ADULTS REPORTING FOOD INSECURITY BY RACE/ETHNICITY AND PRESENCE OF CHILDREN, CONNECTICUT, 2015-2022



Housing Insecurity

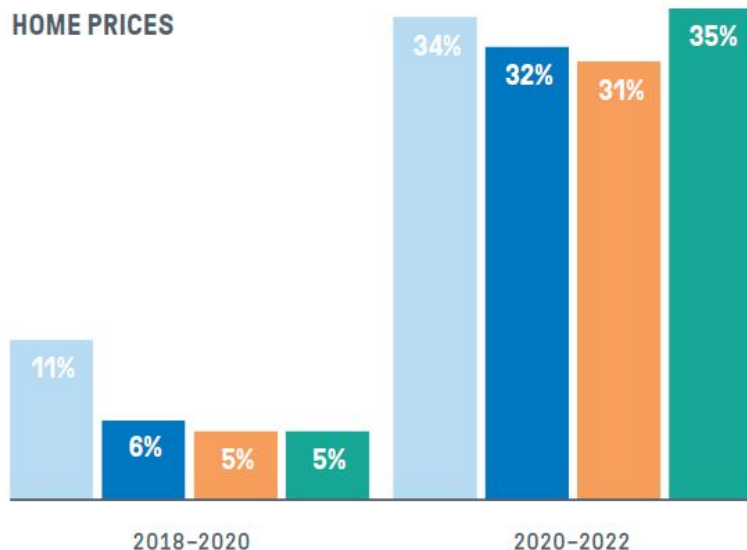
- **32k households** in GNH pay at least half their income towards housing costs
 - This includes **19k renter households** (more than 1 in 4 renters regionwide) and
 - **10k households in New Haven** alone
- Homeownership rates region-wide dropped from **64 to 60 percent** between 2010 and 2020
- **1 percent** of CT adults fear eviction or foreclosure is imminent
- These trends are more extreme for younger, BIPOC, and low-income householders, as well as renters
- Average rent in New Haven County increased by **28 percent** from June 2018 to June 2022

Housing Insecurity

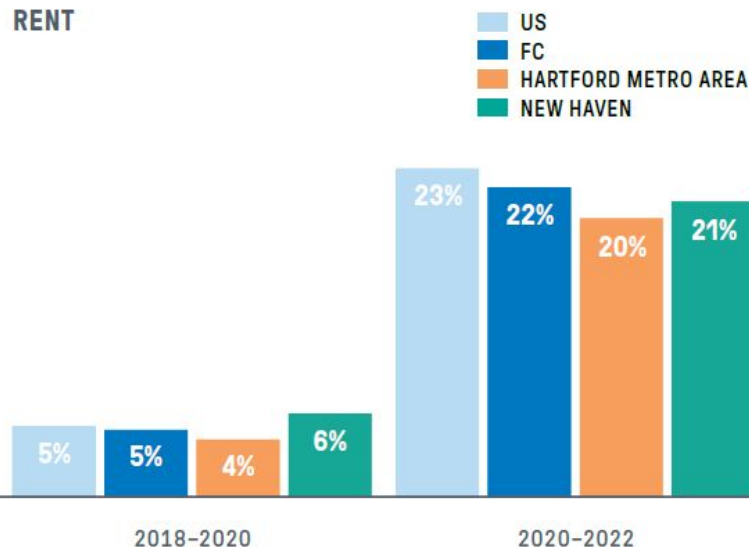
Housing prices have surged since the start of the pandemic

PERCENT CHANGE IN AVERAGE HOME PRICES AND MONTHLY RENT BY COUNTY, 2018-2022

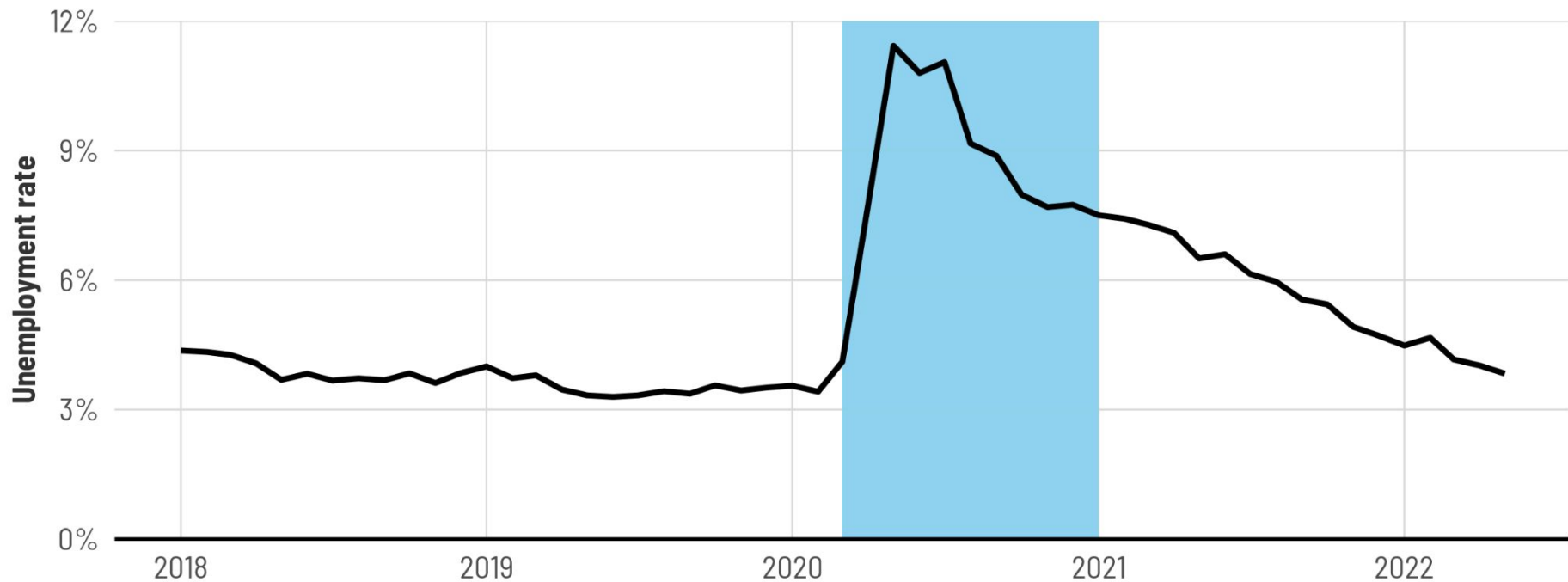
HOME PRICES



RENT



Unemployment and Recovery



Job Losses 2020–2022

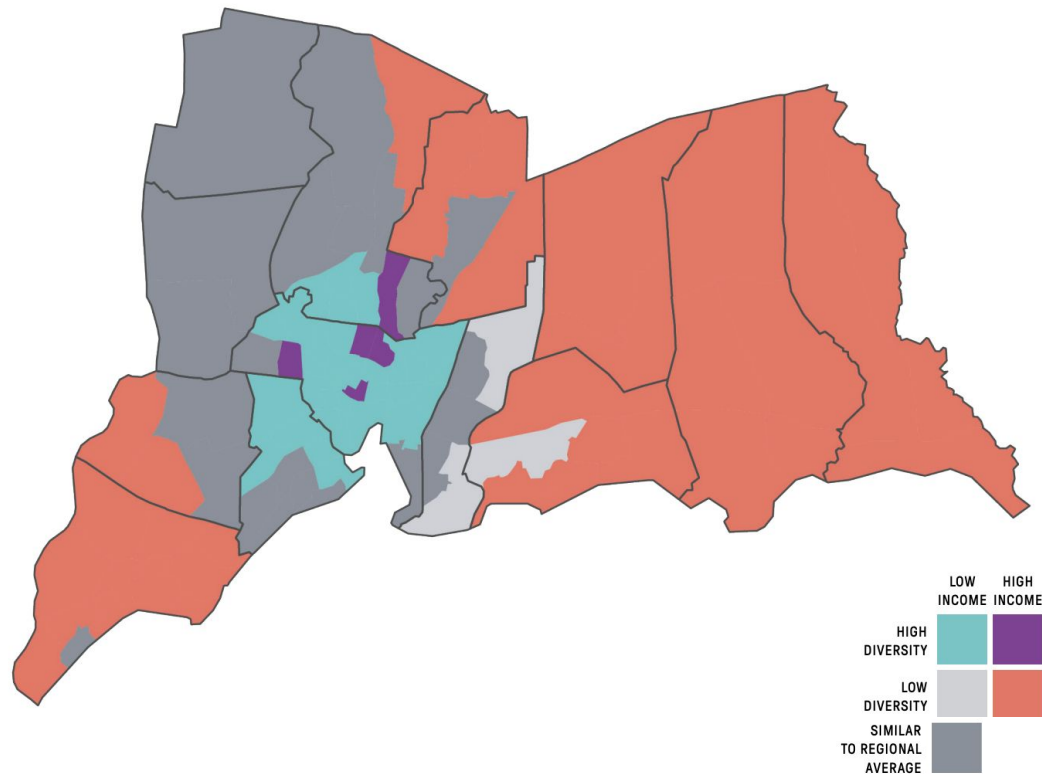
- Many lost jobs are not in the industries growing since 2022

Industry	Jobs (2020Q1)	Jobs (2022Q1)	Pct. Change
All Industries	382,300	378,000	-1%
Health Care and Social Assistance	76,100	72,600	-5%
Educational Services	61,000	60,500	-1%
Retail Trade	43,900	42,400	-3%
Manufacturing	29,700	28,800	-3%
Accommodation and Food Services	28,400	26,200	-8%

All industries and top five industries by employment in GNH

Income and Racial Segregation

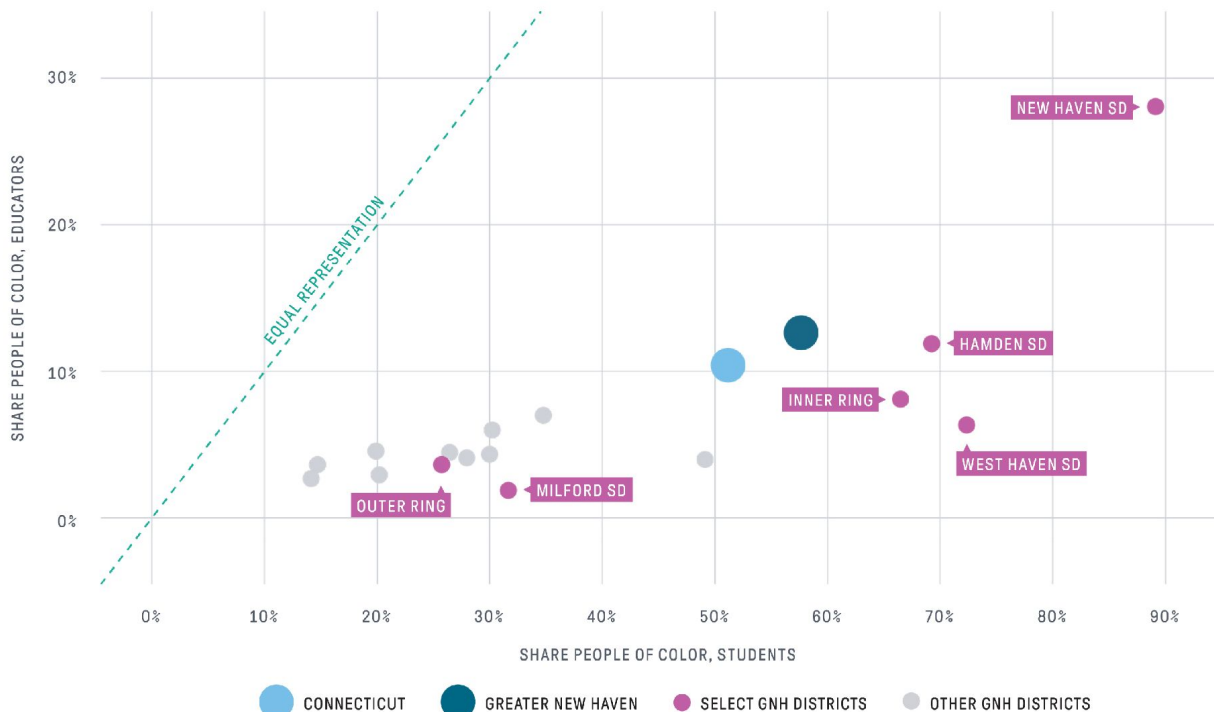
- The average white resident of GNH lives in a neighborhood with **73 percent** white neighbors, while residents of color have more diverse neighbors
- Only **4 percent** of GNH residents live in high income and high diversity neighborhoods



Youth & Education

Even though educators have diversified in recent years, teachers of color are still vastly underrepresented compared to their students

NON-WHITE SHARE OF STUDENTS AND EDUCATORS BY DISTRICT, 2021-22 SCHOOL YEAR
WITH LINE SHOWING EQUAL SHARES OF STUDENTS AND EDUCATORS



- 58% of GNH public school students are people of color, vs only 13% of educators
- Black students are over 3 times more likely to have been suspended in the past school year than white students
- Current childcare slots cover about 22% of children ages 0–2, 61% ages 3–4
- The average childcare slot costs about \$300/week for ages 0–2, \$270/week for ages 3–4



Youth & Education

Impacts of the pandemic

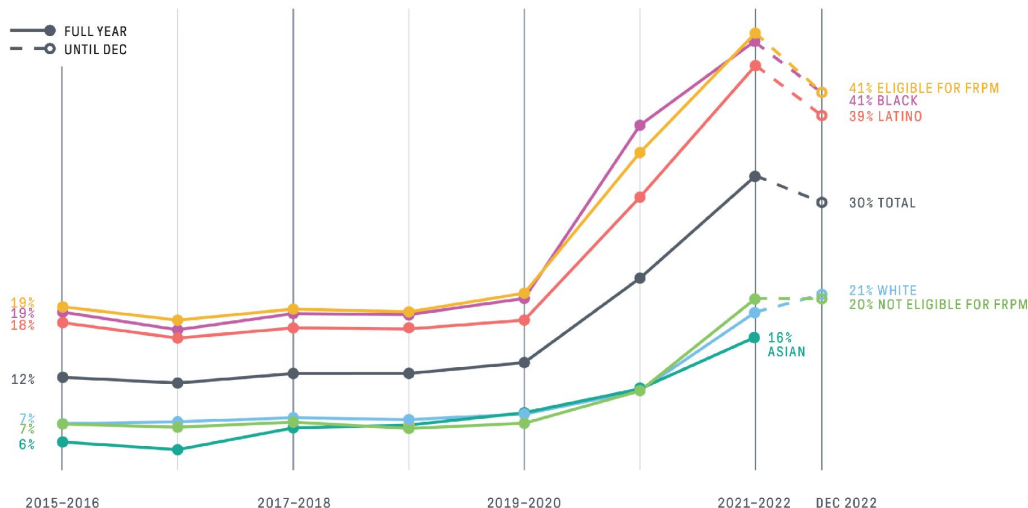
- Lots still unknown
- Chronic absenteeism way up but beginning to subside
 - As before, stratified by race/ethnicity & income
- 8th grade English SBAC pass rate: 45% in SY 2021-22 vs 50% pre-COVID average

Educational outcomes

- 50% of GNH public high school graduates earn a college degree within 6 years
- 8% of GNH adults have no high school diploma
 - 23% of Latino adults

Since the start of the COVID-19 pandemic, chronic absenteeism has skyrocketed

SHARE OF STUDENTS CHRONICALLY ABSENT BY RACE/ETHNICITY AND ELIGIBILITY FOR FREE/REDUCED PRICE MEALS, GREATER NEW HAVEN PUBLIC SCHOOLS, 2015-16 TO 2022-23 SCHOOL YEARS



Civic Life

Views of local community assets

SHARE OF ADULTS, GREATER NEW HAVEN, 2021

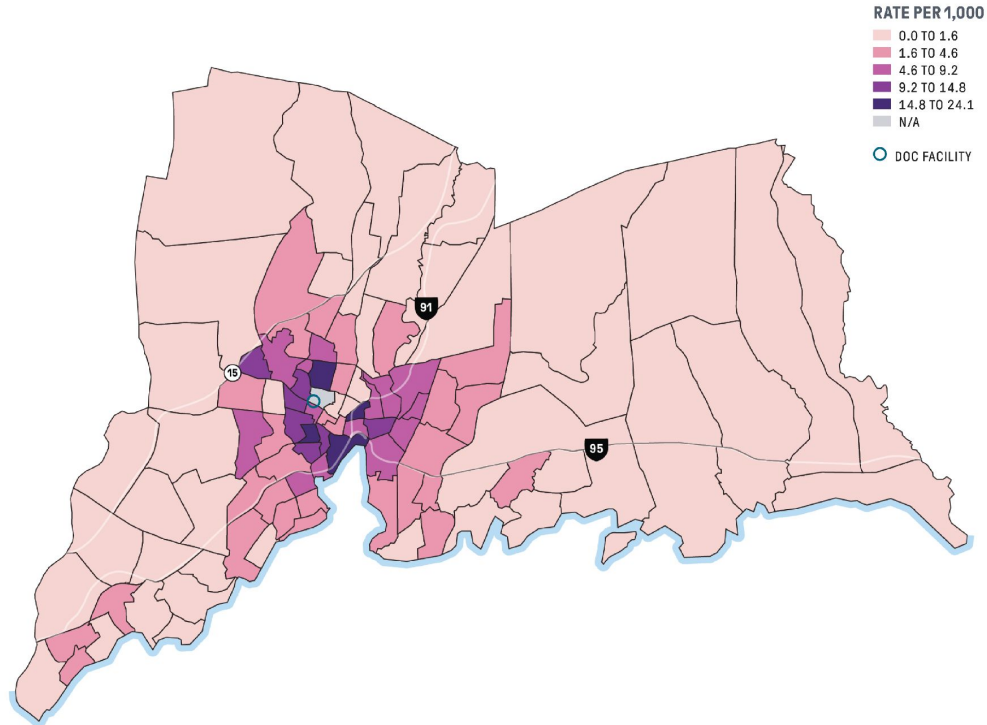
LOCATION	GOOD PARKS	HIGH QUALITY RECREATIONAL FACILITIES	SAFE BIKING	STORES IN WALKING DISTANCE	AFFORDABLE, HIGH QUALITY PRODUCE
Connecticut	78%	74%	68%	56%	76%
Greater New Haven	75%	73%	71%	65%	74%
New Haven	59%	73%	71%	78%	54%

- 88% of GNH adults say they're satisfied with the area where they live, same as state
- Similar to other areas, city residents find neighborhoods more walkable than suburban ones
- Equalized net grand list per capita ranges from \$83,801 in West Haven, \$87,950 in New Haven to \$248,542 in Madison
- School spending per pupil ranges from \$14,906 in West Haven to \$21,154 in Milford

Criminal Justice & Incarceration

In some neighborhoods, more than 1 in 100 residents are incarcerated and counted as living elsewhere

ESTIMATED INCARCERATION RATE PER 1,000 PEOPLE BY TRACT OF RESIDENCE, GREATER NEW HAVEN, 2020, WITH CT DEPARTMENT OF CORRECTION (DOC) FACILITIES



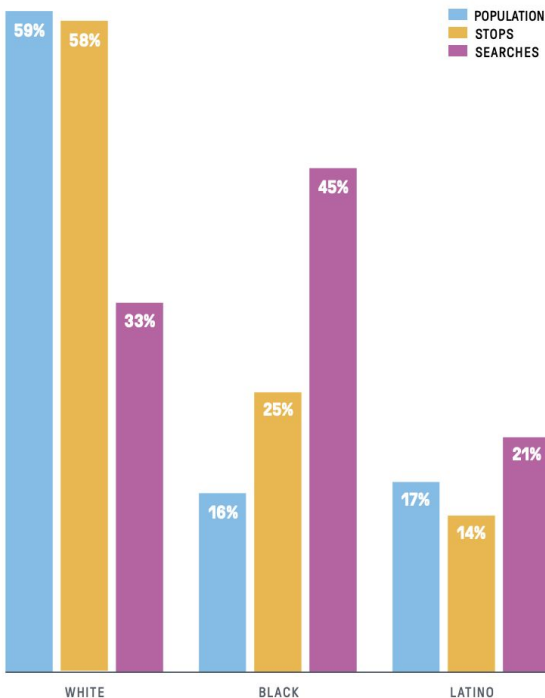
- High incarceration rates in some New Haven neighborhoods
- New state law counts incarcerated people based on last residence, not prison
 - More equitable distribution of resources, legislative power
- 30% of white adults, 21% of Latino adults, 5% of Black adults said police do excellent job keeping residents safe
- 24% of white adults, 40% of Latino adults, 47% of Black adults have a relative who's been in jail

Police Interactions

- Black and Latino drivers are more likely to be stopped and searched than white drivers
- White drivers, when searched, are more likely to have contraband than Black and Latino drivers
- In GNH, 31 percent of Black adults and 13 percent of Latino adults say they have been unfairly treated by police, compared to 10 percent of white adults

Black residents make up a far larger share of drivers searched by police than their share of the population

SHARE BY RACE OF POPULATION, DRIVERS STOPPED BY POLICE, AND DRIVERS SEARCHED BY POLICE WHERE RACE IS KNOWN, GREATER NEW HAVEN POLICE DEPARTMENTS, 2018–2020



Social Drivers of Health

TABLE 7B

Experiences of discrimination

SHARE OF ADULTS REPORTING BEING TREATED UNFAIRLY IN THE PAST 3 YEARS BY SCENARIO, GREATER NEW HAVEN, 2021

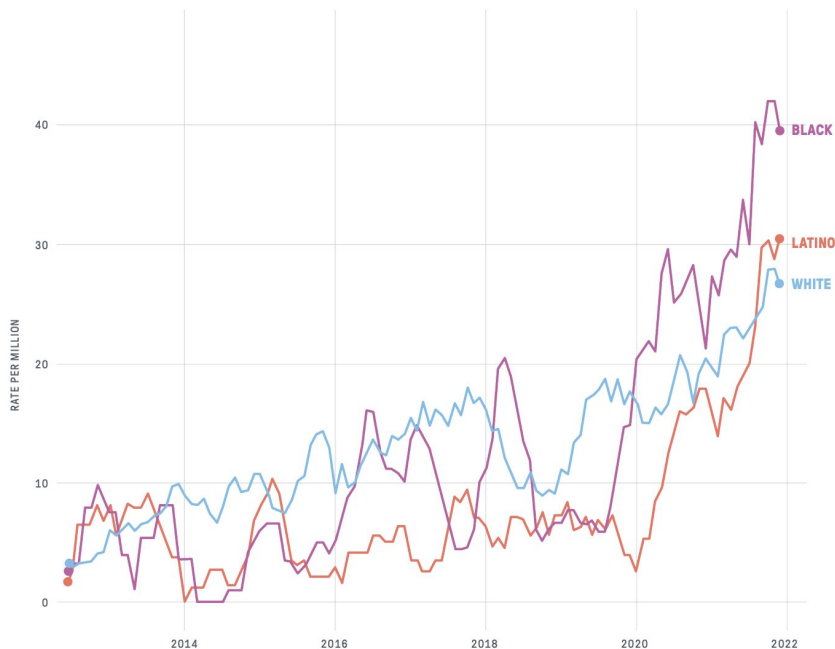
LOCATION	ACCESSING HEALTH CARE	AT WORK OR LOOKING FOR WORK	INTERACTING WITH POLICE
Connecticut	7%	9%	4%
Greater New Haven	7%	8%	4%
New Haven	12%	11%	7%
BY DEMOGRAPHIC WITHIN GREATER NEW HAVEN			
Male	5%	9%	6%
Female	9%	8%	2%
Age 18–34	11%	8%	5%
Age 35–49	8%	12%	6%
Age 50–64	6%	11%	3%
Age 65+	2%	3%	3%
White	3%	4%	1%
Black	18%	18%	14%
Latino	7%	13%	4%
Under \$30K	11%	14%	5%
\$30K–\$100K	8%	9%	4%
\$100K+	4%	5%	3%

- During the past 3 years, Black adults were **5 times** as likely as white adults to report being discriminated against in healthcare settings, and **14 times** as likely as white adults to report being unfairly stopped by police
- 46 percent** of adults earning less than \$30,000 didn't get dental care, compared to 18 percent of adults earning \$100,000 or more

Health Outcomes

Drug overdose deaths have risen steeply

AGE-ADJUSTED ACCIDENTAL OVERDOSE DEATH RATE PER 1 MILLION RESIDENTS BY RACE/ETHNICITY, GREATER NEW HAVEN, 2012–2021 6-MONTH ROLLING MEAN



- The first two years of COVID-19 were the most fatal years for overdoses in GNH history
- Fentanyl is present in 80 percent of fatal overdoses; xylazine is emerging concern

TABLE 7J

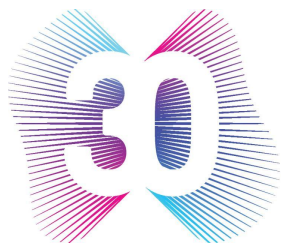
Overdose deaths

ACCIDENTAL OVERDOSE DEATH COUNTS AND ANNUALIZED AGE-ADJUSTED RATES PER 1 MILLION RESIDENTS, 2014–2016 TO 2020–2021

LOCATION	2014–2016		2017–2019		2020 AND 2021	
	COUNT	RATE PER MILLION	COUNT	RATE PER MILLION	COUNT	RATE PER MILLION
Connecticut	2,137	102	3,119	149	2,781	193
Greater New Haven	276	98	367	133	451	246
East Haven	21	131	32	196	32	289
Hamden	30	83	29	84	45	182
New Haven	96	129	137	185	209	445
West Haven	46	138	56	163	61	273

Environment and Public Safety

- Since 2001, average temperatures have increased **1 degree** Fahrenheit in New Haven County.
- The average temperature of heat waves has slightly decreased but the number of heat waves has increased.
- **Almost half** of New Haven residents fear gun violence, and **1 in 8** have witnessed a shooting in the past year.
- In Greater New Haven, more than **80 percent** of vehicle-related collisions with pedestrians and cyclists resulted in injury or fatality.



DataHaven
The Thirtieth Year



2023 Community Wellbeing Index

Get the reports: ctdatahaven.org/reports

May 31, 2023

Mark Abraham, MPH, Executive Director
Kelly Davila, MS, Senior Research Associate
Camille Seaberry, MS, Senior Research Associate