

IN THESE CHALLENGING TIMES  
**COMMUNITY +**  
**OPPORTUNITY**  
**NOW MORE THAN EVER**

**2017/18** REPORT TO OUR COMMUNITY



The **COMMUNITY** Foundation *for* Greater New Haven

# IN THESE CHALLENGING TIMES

Will we allow our community to be pulled apart by those who would divide us in the name of “winner-take-all?”



## NOW MORE

Will we re-assert our long-held community values — inclusion, generosity of spirit and unity — and our belief that opportunity must be widely shared?



## THAN EVER





Leadership .....	4
Highlights .....	6
2017 By the Numbers .....	12
Funds of The Community Foundation .....	14
Organization Funds .....	28
Donors to Foundation Funds .....	30
Gifts In Memory & In Honor .....	37

Grants & Distributions .....	38
Professional Advisors .....	54
Nettie J. Dayton Circle .....	56
Volunteers .....	58
Investments .....	60
Financials .....	61
Professional Staff.....	62

**NOW MORE THAN EVER**



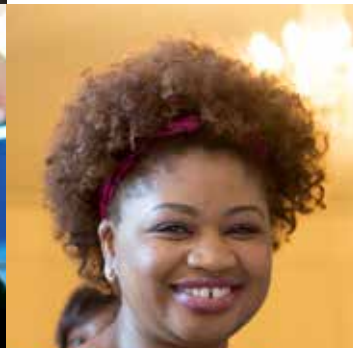
## Board of Directors

James E. Ryan, *Chair*  
Khalilah L. Brown-Dean, *Vice Chair*

Maysa Akbar  
Alicia Caraballo  
Roxanne J. Coady

Kellyann Day  
Joseph Gordon  
Carlton Highsmith

Flemming L. Norcott Jr.  
Marcella Nuñez-Smith  
Gregory J. Pepe



April 2018

Dear Friends:

Since 2016, the priorities and values that have long bound us together and sustained our community have come under assault. It has been and remains a uniquely challenging time.

An unprecedented State budget crisis has threatened to devastate our local nonprofit sector just as dramatic changes in Federal policy have put many of our cherished priorities at risk. Even more fundamentally, the very idea of the common good has seemed to be in eclipse this past year as widening inequality has defined our national life and exclusion, division and demonization have driven our national dialogue.

With community values in retreat nationally in 2017, The Foundation called out to the people and institutions of Greater New Haven with the words *Community Now More Than Ever*, and our community responded. Over and over again this past year, we saw our community demonstrate inclusion, generosity of spirit and unity, not only in what we said but in what we did.

In 2018, *Community Now More Than Ever* remains our watchword. As we work to maintain community cohesion against the stiff headwinds of divisiveness, we do so with the belief that a sense of shared opportunity can itself be a powerful cohesive force for the people of Greater New Haven. This is our chosen path forward.

Our philanthropy is creating opportunity — for young people aspiring to college and a place in the new economy, for immigrants threatened with deportation, for new mothers and their babies, for those returning to New Haven to begin anew following incarceration, for women and girls through gender equity, for those seeking personal transformation through skills and work, and for neighborhoods too long neglected by those who would invest in New Haven.

The Foundation has never been better positioned to meet the challenges of our time and to help illuminate the path of shared opportunity.

The Foundation's donors continued their exemplary support in 2017, contributing generously in many ways, including to our newly-created Community Now More Than Ever Fund. Most dramatically, The Foundation entered into a partnership with a local private

foundation this past year that provided over \$40 Million for The Foundation to invest in small businesses, nonprofits and other projects with the potential to create opportunity in our community.

This new partnership, combined with The Foundation's outstanding investment performance in 2017, increased our total assets at year-end by more than \$110 Million as compared to a year earlier.

As befits this time of change, The Foundation is using our resources in new ways. The Foundation is focusing our grants on ameliorating the impacts of changes in public policy and public funding and is also providing new levels of support for nonprofits exploring collaborations, mergers and other innovative business models. At the same time, The Foundation understands that community dynamics are changing at every level, and we are structuring new ways to listen and respond to community residents, those who know best what is happening in our cities, towns and neighborhoods.

Meeting the challenges of this time also requires The Foundation to be a stronger and more effective institution. The Foundation's three-year plan to further enhance operations, processes and organizational culture, known as TCF 20/20, is well underway and is already yielding real dividends in our work and our impact.

2018 marks The Foundation's ninetieth anniversary. Even if our challenges are different as we enter our tenth decade, we remain steadfast in our resolve to build community philanthropy as a force for progress in Greater New Haven. We will continue to work closely with local donors, nonprofits, volunteers, residents, businesses and community leaders to strengthen our community for today and to create opportunity for tomorrow.

Now more than ever, we invite you to join us in the work of community.

  
James E. Ryan  
Chair, Board of Directors

  
William W. Ginsberg  
President & CEO



Much of The Foundation’s work in 2017 was shaped by the deep divisions in our broader society that have emerged over the last several years. Perceiving that in the United States today the core values of community — inclusion, generosity of spirit and unity — are under unprecedented assault, The Foundation called upon Greater New Haven to stand together to defend the values, priorities and common undertakings which have defined the progress of our community for decades. Our grantmaking and other community programming reflected this approach. Our message was and is *Community Now More Than Ever*.

In 2018, these challenges remain — in public budgets, public policies and the terrible divisiveness that defines our times. Going forward, The Foundation will underscore our message by promoting ideas and programs that bring our community together in new ways. Among other things, The Foundation will advance an agenda of economic growth and inclusion, believing that a shared sense of opportunity for all in our community will serve as a cohesive force at a time when it is very much needed.



**Distributions of \$28.5M sustain nonprofits, but new strategies are necessary.**

The impact of the State budget crisis was felt across the community and The Foundation responded. In partnership with United Way of Greater New Haven, The Foundation launched an outreach effort called “In It Together” to learn from local nonprofits. The Foundation’s responsive grants prioritized support to organizations that are taking state budget hits. Many grant awards provided multi-year general operating support to give organizations the greatest flexibility and the ability to plan for the unknown. In total, The Foundation distributed \$28.5M through grantmaking and leadership strategies.

In 2018, The Foundation is continuing this partnership with United Way. In addition, The Foundation is making a special effort to assist nonprofits in preparing for continued reductions in state funding by helping them to consider strategic alliances. The Foundation will provide resources to build the capacity of nonprofits to explore their financial and operational vulnerabilities and options, and to develop long-term strategies to sustain programs and services.



**Immigrants, facing new hostility, remain central to the future of Greater New Haven.**

Immigration remained a top Foundation priority in 2017, although the work changed dramatically in response to the about-face in Federal policy. Much of work is carried out through The Immigration Strategic Funders Collaborative for Connecticut. The Collaborative, one of only fourteen in the nation, is made up of funders, service providers and advocacy groups. In addition to grantmaking, The Foundation is promoting awareness of the contributions immigrants make to the economic, cultural and social well-being of the region. See Instagram posts @immigrantexperiencegnh.

In 2018, the Collaborative members anticipate distributing more than \$500,000 dollars across the state to support eligibility screening for immigration benefits; expand current advocacy work in support of stronger protections from detention, deportation and abuse; and maintain family unity and safe communities.



**Donors, returning and new, rally for community-wide giving to local nonprofits.**

During The Great Give® 2017 more than 8,100 donors made more than 11,300 gifts totaling just under \$1.3 Million. Approximately one-third of the gifts were self-reported as the first time the donors had given to the particular nonprofit; and roughly 12% of donors self-reported as being “next gen.” The Great Give® continues to make a unique contribution by expanding the donor bases of participating nonprofits, including introducing them to the next generation of givers in our community.

The Great Give® 2018 will be held on May 1 and 2. Preceding this year’s event, nonprofits are taking advantage of workshops about online marketing and are sharing past Great Give® successes, including tips on using videos, emails, events and collaboration.



**Innovative programs help people navigate life after prison.**

As part of our continuing commitment to improving the lives of recently incarcerated individuals and of their families, The Foundation made a grant to support the New Haven Law Enforcement Assisted Diversion Initiative (LEAD) a pre-arrest/pre-arrest diversion program. Another grant was made to the City Wide Youth Coalition to support organizing 16-24 year olds for justice reform. The Foundation also supported the distribution of *Life on Parole*, a film that follows four former prisoners from Connecticut as they navigate the challenges of their first year on parole.

Launched last year and continuing in 2018, the voices of people starting over after coming home from prison are raised up on *Criminal Justice Insider*, a new radio show on WNH, sponsored by The Foundation.





### College grads need a vibrant local economy and jobs.

New Haven Promise (NHP) continues to grow in size and scope each year and named 359 scholars in the Class of 2017, an all-time high. With many of its scholars graduating from college each year, NHP encourages them to return to live and work in Greater New Haven by connecting them to local employers. The Foundation continues to be one of NHP's major funders and also plays an important role on its Board.

The Foundation will continue its support of NHP in 2018 because the future of Greater New Haven depends on our success in keeping these talented young people here. NHP scholars, like so many in our community, will need the opportunities that only a growing economy will provide.



### The Women & Girls Fund builds connection and solidarity.

In 2017, the Community Fund for Women & Girls hosted events on relevant and timely issues. At its Annual Meeting in June, entitled *Feminism: The Common Denominator?*, Linda Sarsour, co-chair of the 2017 national Women's March, and *New York Times* best-selling author Rebecca Traister issued a rousing call for feminism to play a lead role in how our national community comes together in response to the divisiveness of these times.

In 2018, activist Tarana Burke, founder of the #MeToo movement, will be the featured speaker at the Fund's Annual Meeting. Burke, a sexual violence survivor herself, started the grassroots movement in 2006 as a way to build solidarity among young survivors of sexual harassment and assault. The phrase was used as a hashtag by actor and activist Alyssa Milano and both Burke and Milano, along with other women's rights activists, were among "The Silence Breakers" who were named Person of the Year for 2017 by *Time* magazine.



### The Quinnipiac River is a community treasure.

More than \$130,000 was distributed by the Quinnipiac River Fund in 2017. Grants were made to: reduce both non-point and point sources of pollution to the river, examine the state's permitting process, study the ecology of the Quinnipiac River and New Haven Harbor, educate the public about the river, purchase land for conservation purposes, and improve public access to the river.

In 2018, work will continue on the Fund's website, thequinnipiacriver.com, which is a comprehensive resource about the river. It includes the river's history and contains maps about pollution sites as well as public access points for recreation activities. It also lists all of the grants made from the fund since its inception in 1990.



### Investing in our community to create jobs and revitalize neighborhoods.

In 2017, Mission Related Investments (MRIs) emerged as an important part of The Foundation's work. MRIs make capital available to innovative business ventures and organizations that have the potential to strengthen Greater New Haven. Working alongside The Foundation's grantmaking dollars, MRIs provide start-ups, small businesses and nonprofits access to the capital they need to grow and strengthen the local economy, create jobs and promote economic revitalization. The Foundation received \$41M from a local private foundation to support MRIs.

In 2018, The Foundation will continue expanding the connections between private foundations, individual donors, and local entrepreneurs through mission investments, and expects to work more closely with its philanthropic partners on several MRIs in the Dixwell and Newhallville neighborhoods of New Haven, among other places.



### The Progreso Latino Fund rallies to support neighbors in need.

The Progreso Latino Fund (PLF) hosted *The Latino Experience: Living in Two Worlds* featuring comedian Elizardi Castro. The money raised during the event is supporting vital disaster relief efforts in Puerto Rico and Mexico. The Fund is now working to respond to the needs of families who have come to New Haven as a result of the natural disasters.

In 2018, PLF is celebrating its 15th birthday with a Quinceañera. The Fund has grown from an initial challenge gift of \$2,500 in 2003 to a current value of almost \$400,000. It has sponsored educational forums and community events to bring people together, engage Latinos and non-Latinos about opportunities, and provide a vehicle for conversations about how local and national issues impact Latinos.



### New Haven Healthy Start celebrates twenty years of promoting healthy families.

In 2017, New Haven Healthy Start (NHHS) celebrated 20 years as the premier maternal and child health program in New Haven. Prior to NHHS, the Infant Mortality Rate (IMR) in New Haven was more than 20 deaths per 1,000 live births. The IMR in New Haven has fallen to 7 deaths per 1,000 live births. For NHHS babies, the IMR is 4.5 deaths per 1,000 live births, or one out of 222, below both state and national averages.

In 2018, NHHS will apply for the next five years of Federal funding. It will continue to emphasize a care coordination model of services with particular focus on: paternal involvement, community outreach, and deeper community engagement and parenting support through NHHS's Consortium/Community Action Network. NHHS is one of 100 Federally-funded Healthy Start programs across the country and one of thirteen participating in a national evaluation. The Men's Consortium continues to engage men and fathers and NHHS expects to launch a men's health initiative this year.

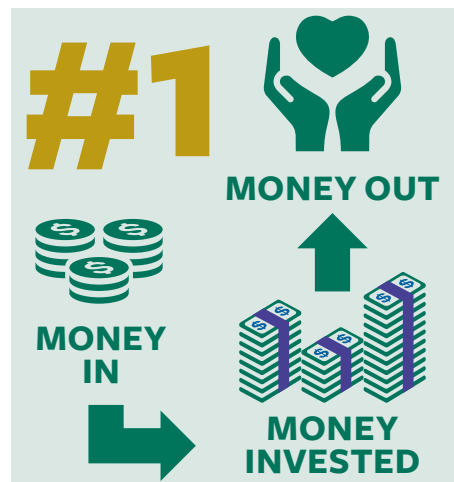




## The Valley builds on the strong bonds of many generations.

The Foundation's affiliate in the Lower Naugatuck Valley, the Valley Community Foundation (VCF), launched the Valley Gives Back™, a community-wide, planned-giving initiative that promotes the importance of giving locally to benefit the region for years to come. The Valley has a rich history of well-known figures — Katharine Matthies, Frank and Ross Gates and Wilbur Fisk Osbourne, among them — who left a legacy of their love for the Valley through planned gifts. VCF is informing the Valley community that planned gifts can be made by anyone, in any amount, to benefit the charitable organizations one was passionate about during life.

Throughout 2018, VCF will continue to spread the word about the Valley Gives Back™ with a dedicated website, valleygivesback.org, that offers simple explanations of giving vehicles, sample estate plan language, toolkits, and resources that help demystify some of the perceived complexities of planned giving. VCF is also working with local nonprofits and legal and financial advisors to show how easy it is to make a meaningful impact through a planned gift.



## Outstanding investment performance adds to the community's charitable capital.

A national survey comparing community foundations' investment performance revealed that The Foundation was #1 in 2017 among foundations with assets exceeding \$500M. The Foundation's Corporation achieved a one-year rate of return of 18.6% net of investment management expenses, which was 2.6% ahead of the median return for its peer group. Year-end assets of The Foundation were \$620M, up from \$509M at year-end 2016.

In 2018, The Foundation will continue to allocate assets to achieve the objectives of maximizing return for its assumed level of risk while avoiding the temptation to "market-time" or alter strategy based on near-term outlooks. The Foundation uses less liquid investments while preserving sufficient liquidity for cash flow requirements and capitalizing on and re-balancing into market dislocations as experienced in early 2018.



## Donors, organizations and investors entrust \$54M in new capital to The Foundation.

Close to \$54M was contributed or transferred to The Foundation and 46 new funds were created in 2017. A record twenty-six new donor advised funds (DAFs) were established including one created as part of the Custom Investment Partnership Program (CIPP), a new program through which donors recommend that their professional advisor manage the assets in their fund. As part of The Foundation's *Community Now More Than Ever* programming, donors attended numerous events and briefings and partnered with The Foundation to make more than \$140,000 in collaborative grantmaking.

Donors continue to engage deeply with The Foundation in 2018. Lower tax rates and the broadening of the estate tax exemption will likely impact philanthropy starting in 2018 and The Foundation will work closely with local donors and their professional advisors to understand the new laws, including exploring the benefits of donor advised funds at The Foundation.



## Community reports track information for improvement.

The Foundation partnered with the Guilford and Branford Community Foundations and DataHaven to produce reports on the two shoreline communities. Although Branford and Guilford have much lower poverty rates than the state or the region, 14–15% of the towns' households are severely cost-burdened. And while 91% of Branford and Guilford residents rate their town as a good place to raise children, the percentage of children living in low-income families is 22% and 14%, respectively. High school graduation rates exceed 90% and residents have lower health risks (such as anxiety, obesity, asthma, and food insecurity) compared to state percentages.

In 2018 and beyond, The Foundation will develop similar reports for additional regional towns as well as a number of New Haven neighborhoods. The shoreline reports are drawn from the *Greater New Haven Community Index 2016*, produced by DataHaven in collaboration with community, government and institutional partners, including The Community Foundation. A new *Greater New Haven Community Index* is planned for 2019.



## Arts collaboration brings value and a sustainable future.

The multi-year strategy of The Foundation and partner arts organizations to enhance the vibrancy and sustainability of the sector has three components: engaging stakeholders, driving earned revenue and exploring collaborations and shared services. Results in 2017 included the National Endowment for the Arts making a grant to the Arts Council to launch a digital hub to coordinate activities, reach audiences and create buzz around the cultural life of Greater New Haven. In addition, a grant from Medtronic funded fifteen collaborating arts organizations to allow cancer patients and their families to attend arts events and experiences across the community for free.

In 2018, The Foundation and its partner arts organizations will launch a planned giving campaign and work to establish a framework for advocacy for public funding. These two initiatives are intended to educate and involve a broad community to sustain the arts for all.





**\$28.5 Million**  
MADE IN **GRANTS**  
AND **DISTRIBUTIONS**

**46**  
**NEW FUNDS**  
CREATED



**\$25 Million**  
IN **ASSETS**  
VALLEY COMMUNITY  
FOUNDATION

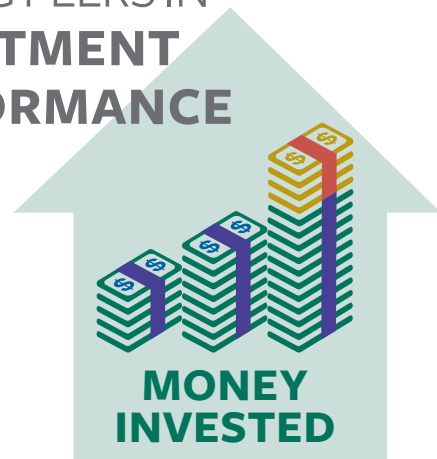


**942**  
PEOPLE ATTENDED **45** CAPACITY  
BUILDING WORKSHOPS

**\$620 Million** IN ASSETS  
AT YEAR-END 2017.  
UP FROM **\$509 MILLION** IN 2016



**#1**  
AMONG PEERS IN  
**INVESTMENT**  
**PERFORMANCE**

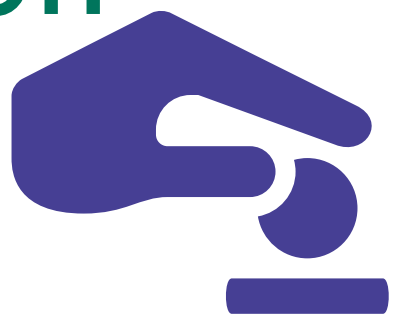


**20 YEARS**  
WORKING TO PROMOTE  
**HEALTHY FAMILIES**  
 **healthy START** NEW HAVEN



MORE THAN **8,100** DONORS MADE OVER  
**11,300** GIFTS TOTALING JUST UNDER  
**\$1.3 Million**  
DURING **THE GREAT GIVE® 2017**

**\$53.8 Million**  
**GIFTS AND**  
**TRANSFERS**  
RECEIVED



**359**  
**NEW HAVEN PROMISE**  
SCHOLARS RECEIVED  
SCHOLARSHIPS IN 2017



Forty-six new funds were established at The Foundation in 2017, most of which are donor advised funds and funds transferred to The Foundation for investment management.

Year after year, donors’ charitable investments support our community, addressing immediate needs and growing to keep pace with the community’s future. We thank our donors for their generosity and community spirit.

The 10.05 Fund  
Est. 2010 by Brad Collins and Nancy Clayton.

The 44-62 Fund  
Est. 2014 by the Seedlings Foundation.

Alliance of African American Nonprofit Executives Fund  
Est. 2008 by members of the Alliance of African American Nonprofit Executives.

Achievement First Fund for New Haven Youth Enrichment  
Est. 2013 by Achievement First.

Alexion Pharmaceuticals Fund  
Est. 2016 by Alexion Pharmaceuticals Inc.

Anthony P. Adinolfi Jr. Fund  
Est. 1997 by bequest of Julia DeCapua.

Abner A. & Hannah S. Alderman Fund  
Est. 1969 by gifts from family and friends of Hannah S. and Abner A. Alderman.

Olive Alling Fund  
Est. 1993 by Olive A. Alling.

Elsie M. Alling Fund  
Est.1961 by bequest of Elsie M. Alling.

Margaret Mary Allman Fund  
Est. 2012 by bequest of Margaret Mary Allman.

Jeanne Meyers Amore Memorial Scholarship Fund  
Est. 2004 by Susan Asarisi, Nancy Boney, John Meyers and Kathryn Tonucci.

Margaret M. Amrich Fund  
Est. 2006 by bequest of Margaret M. Amrich.

Angel Fund  
Est. 2002 by Joseph and Shelly Cogguillo.

Chip & Barbara Angle Fund  
Est. 2016 by Chip and Barbara Angle.

Angle Family Fund  
Est. 2015 by Barbara B. and Richard W. Angle Jr.

Anonymous 106 Fund  
Est. 2003 by an anonymous donor.

Anonymous 108 Fund  
Est. 2001 by anonymous donors.

**Dr. Leon Bailey Jr. Fund**  
Est. 2017 by Leon Bailey Jr.

A graduate of New York Theological Seminary, Dr. Leon Bailey has long admired the many donors who start endowments at The Community Foundation. Though their interests may be different, fund founders share a common bond with each other: they are all charitably-minded. In that vein, Dr. Bailey, a member of The Foundation’s senior leadership team, was inspired to create a donor advised fund in 2017. “I believe in The Foundation’s mission and product and felt by establishing this endowed fund my engagement in this community could be strengthened.” His fund represents the melding of several critically important areas of his life: religion, employee benefits and social justice. It will support efforts to further various causes. And, social justice — whatever that may look like in the future — will have a small voice of support.



Anonymous 110 Fund  
Est. 2010 by an anonymous donor.

Anonymous Fund  
Est. 1998 by an anonymous donor.

Diane Fried Ariker & Walter H. Ariker Fund  
Est. 2005 by Diane and Walter Ariker.

Dr. Stephan Ariyan Foundation Fund  
Est. 2001 by Dr. Stephan Ariyan.

Mary B. Arnstein Fund  
Est. 2001 by Mary B. Arnstein.

Clara Stella Tropeano Arpaia Memorial Fund  
Est. 2012 by Lisa F. Arpaia, Esq.

Sandra Arpaia Scholarship Fund  
Est. 1996 by A. Thomas Arpaia.

Artist Next Door Endowment Fund  
Est. 2008 by the Arts Council of Greater New Haven.

Arts Fund  
Est. 1980 by The Community Foundation for Greater New Haven.

Fund for Arts and Justice  
Est. 2014 by an anonymous donor.

Russell H. & Lucie E. Atwater Fund  
Est. 2008 by bequest of Russell H. and Lucie E. Atwater.

August Family Fund  
Est. 2003 by Stephen P. and Judith N. August.

Autumn Fund  
Est. 2013 by Ethel and Eric Berger.

Axtmayer Cancer Fund  
Est. 2011 by Alfredo L. Axtmayer II.

Bambi Bailey Scholarship Fund  
Est. 2001 by Barbara Carlson.

**Dr. Leon Bailey Jr. Fund**  
Est. 2017 by Leon Bailey Jr.

Albert and Ella Baker Fund  
Est. 1969 by bequest of Albert A. Baker.

Albert H. Barclay Sr. Fund  
Est. 1951 by the Armstrong Rubber Company.

William C. Barclay Fund  
Est. 1956 by bequest of William C. Barclay.

Albert Hampton and Catharine Hooker Barclay Fund  
Est. 2003 by Thomas H. Barclay, Albert H. Barclay Jr., Emily M. Barclay and Catharine B. Fender.

Barnett Family Fund  
Est. 1986 by Joni Barnett.

Alice M. Barnum Fund  
Est. 1958 by bequest of Alice M. Barnum.

Barrie Muir Fund  
Est. 2009 by an anonymous donor.

Nancy H. and Henry E. Bartels Fund for the Garden Club of New Haven  
Est. 2013 by Henry E. and Nancy Horton Bartels.

Henry E. & Nancy Horton Bartels Fund for Education  
Est. 2008 by Henry E. and Nancy Horton Bartels.

Myrna and Arnold Baskin Fund  
Est. 2009 by Myrna Baskin.

Baxter Fund  
Est. 2016 by Dolores Giannini.

Richard and Alice Baxter Fund  
Est. 2015 by Richard and Alice Baxter.

William T. & Florilla B. Beazley Fund  
Est. 1995 by bequest of William T. Beazley.

Becky Fund  
Est. 2005 by anonymous donors.

Anne Hope Bennett Fund  
Est. 1943 by bequest of Anne Hope Bennett.

Berry-Hulin Family Fund  
Est. 2003 by Laura A. Berry and Bernard M. Hulin.

Carla A. Birmingham and Deborah Kruglik Fund  
Est. 2002 by Carla A. Birmingham.

Bishop Family Fund  
Est. 2005 by Susan Whetstone.

Joseph & Susan Bishop Fund  
Est. 1985 by Susan Bishop.

Miriam E. Coleman Birdwhistell Fund  
Est. 2015 by Nan Birdwhistell.

Margaret T. Bixler Fund  
Est. 2012 by Margaret T. Bixler.

**BlackNHV Fund**  
Est. 2017 by Ratasha Smith.

Eugene M. Blake Fund  
Est. 1970 by bequest of Eugene M. Blake.

Harold L. and Leonas T. Blakeslee Fund  
Est. 1987 by bequest of Harold L. Blakeslee.

**Blue Sky Fund**  
Est. 2017 by Carolyn M. Mazure.

Board of Directors Fund  
Est. 1996 by the Board of Directors of The Community Foundation for Greater New Haven.

E. Irene Boardman Fund  
Est. 1999 by the E. Irene Boardman Foundation.

Gerald J. and Helen B. Bogen Scholarship Fund  
Est. 1984 by Helen B. and Gerald J. Bogen.

Mary Ann Bonenberger Fund for the Bethesda Nursery School  
Est. 2008 by Christin and Ben Sadwiess, Rebecca L. Paugh, Jorge Otero and other donors.

Dennis Bornick Fund  
Est. 1993 by Lydia Bornick.

Alice Botsford Fund  
Est. 2002 by bequest of Alice Botsford.

Norma M. Botti Scholarship Fund  
Est. 1997 by bequest of Norma Botti.

Botwinik-Horowitz Fund  
Est. 1972 by The Botwinik Foundation.

Grace Bourne Fund  
Est. 1984 by bequest of Grace Bourne.

Bovilsky Scholarship Fund  
Est. 2005 by the Board of Directors of LEAP.

Rob and Sandy Bowers Memorial Fund  
Est. 1996 by family and friends.

Boys & Girls Club of New Haven Endowment Fund  
Est. 2010 by the Boys & Girls Club of New Haven.

Bert Boyson Charitable Fund  
Est. 2006 by Bert Boyson.

Anna Bradley Fund  
Est. 1980 by bequest of Anna P. Bradley.

Howard Bradley Fund  
Est. 1982 by bequest of Howard Bradley.

Mary and Charles Bradley Fund  
Est. 2016 by Mary M. Bradley.

Robert J. and Kathleen G. Bradley Fund  
Est. 2016 by Robert J. and Kathleen G. Bradley.

Grace G. Bright Fund  
Est. 2014 by Grace G. Bright.

Henry P. Brightwell Fund  
Est. 1999 by Henry Brightwell.

William J. & Clare W. Bright Fund  
Est. 2011 by Jay Bright.

Matthew & Gladys Bliss Brinckerhoff Fund  
Est. 1982 by the W. E. Bliss Charitable Foundation.

Jennie C. Bronson Fund  
Est. 1976 by bequest of Jennie C. Bronson.

Sarah Sophia Bronson Fund  
Est. 1940 by bequest of Sarah Sophia Bronson.

Alvis Brooker Memorial Scholarship Fund  
Est. 2011 by the Black and Hispanic Caucus of New Haven’s Board of Aldermen.

Charles B. Brown and Frank L. Manwaring Fund  
Est. 1970 by bequest of Madeleine E. Brown.

Kate Brown Fund  
Est. 1982 by bequest of Kate W. Brown.

Raymond Brown Fund  
Est. 1991 by Jane Brown.

**Buckholz/Fontaine Family Fund**  
**Est. 2017 by Robert E. Buckholz, Jr. and Anne Elizabeth Fontaine.**

The Bundy Fund  
Est. 2016 in memory of Christopher William Caldwell by friends and family.

**Bundy-Tofflemire Fund**  
**Est. 2017 by James Bundy and Anne Tofflemire.**

Josephine Burgess Fund  
Est. 1981 by bequest of Josephine Burgess.

Burt Family Fund  
Est. 2010 by Mary Jane Burt.

Grace E. Busby Fund  
Est. 1962 by bequest of Grace E. Busby.

George J. Bysiewicz Scholarship Fund  
Est. 2000 by Katherine Bysiewicz.

Connecticut Association of Latinos in Higher Education Fund  
Est. 2008 by Connecticut Association of Latinos in Higher Education.

Anne Tyler Calabresi Fund  
Est. 2015 by Roslyn Milstein Meyer.

Flora Calhoun Fund  
Est. 1957 by bequest of Flora J. Calhoun.

Capers Prize Fund  
Est. 2009 by the Capers Committee.

**BlackNHV Fund**  
Est. 2017 by Ratasha Smith.

US Representative Shirley Chisolm once said “if they don’t give you a seat at the table, bring a folding chair.” Ratasha Smith adopted her idol’s saying as her own, making one change: instead of bringing a chair, Ratasha advocates “building your own table.” In October 2017, she created the BlackNHV Fund to support those in the nonprofit sector who have done just that.

The BlackNHV Fund, a donor advised fund, is intended to support black-led nonprofits in Greater New Haven. Ratasha hopes the BlackNHV Fund will bridge the socioeconomic gap within Greater New Haven’s black community that at first glance may go unnoticed. “So many of us get to where we are going then forget where we came from. I refuse to forget because I know that where I came from has much to do with where I am today. There were so many who took time out of their busy schedules to help and guide me throughout my life and I want to do that for others. I want those who have had success in the city, to support the fund to help those who just need a little bit more help, while supporting those who choose to lead the charge.”



David A. Cappetta Scholarship Fund  
Est. 2014 by family and friends of David A. Cappetta.

Deidre Salmona Caproni Memorial Fund for the Advancement of Literature and Arts  
Est. 2010 by Christopher Caproni.

Caroline’s Room Fund  
Est. 2006 by Gary Doyens and Jocelyn Maminta.

Allen & Liza Carroll Fund  
Est. 2006 by bequest of H. Allen Carroll.

Clare Coe Casher Memorial Fund  
Est. 2014 by the family of Clare Coe Casher.

Catalyst Fund  
Est. 1996 by many donors.

Charles Chamberlin ‘A’ Fund  
Est. 1967 by bequest of Charles G. Chamberlin.

Charles Chamberlin ‘B’ Fund  
Est. 1973 by bequest of Charles G. Chamberlin.

Chapel Haven Graduate Fund  
Est. 1984 by Chapel Haven.

Betsy Chase Fund for Docents  
Est. 1997 by Roberta Yerkes Blanshard.

Helen & Wilson Chatfield Fund  
Est. 1998 by Helen and Wilson Chatfield.

Chauncey Fellowship Fund  
Est. 2002 by Tony and Linda Sanders.

Barbara Chesler Fund  
Est. 2015 by Barbara Chesler.

John L. Chidsey Fund  
Est. 1964 by bequest of John L. Chidsey.

Etta S. Chidsey Fund  
Est. 1961 by bequest of Etta S. Chidsey.

Children In Placement Fund  
Est. 2008 by Children In Placement Inc.

Children’s Center Fund  
Est. 1987 by Children’s Center.

Christian Community Action Inc. Fund  
Est. 2008 by Christian Community Action Inc.

David M. Ciardiello Fund  
Est. 1983 by Peter Ciardiello.

Dominic Cinicola Fund  
Est. 2000 by bequest of Dominic Cinicola.

Civic Orchestra of New Haven Fund  
Est. 1991 by Civic Orchestra of New Haven.

Annette S. Clark Fund  
Est. 1997 by Annette S. Clark.

**The Bitsie Clark Fund for the Arts**  
**Est. 2017 by Barbara Lamb.**

**Katrina Clark Fund**  
**Est. 2017 by friends and family.**

Mark & Jennifer Clayton Fund  
Est. 2006 by Mark and Jennifer Clayton.

Clifford Beers Guidance Clinic Fund  
Est. 1999 by Clifford Beers Guidance Clinic.

Edwin P. Cochran Fund  
Est. 1975 by bequest of Edwin P. Cochran.

Alice F. Cochran Fund  
Est. 1944 by bequest of Alice F. Cochran.

Lillian Coe Fund  
Est. 1991 by Sherwin and Clare Casher.

Joel Cogen Fund  
Est. 2014 by family and friends.

Community Fund for Women and Girls  
Est. 1995 by an anonymous donor and many other donors.

**Community Now More Than Ever Fund**  
**Est. 2017 by The Community Foundation for Greater New Haven.**

Connecticut Children’s Museum Fund  
Est. 1986 by Connecticut Children’s Museum.

Connecticut Fund for the Environment  
Est. 1994 by The Connecticut Fund for the Environment.

Connecticut Hospice Fund  
Est. 1978 by Connecticut Hospice Inc.

Connecticut Women’s Golf Association Fund  
Est. 1991 by Connecticut Women’s Golf Association.

Edward Cooley Fund for Music  
Est. 1997 by bequest of Edward Cooley.

James W. Cooper Unrestricted Fund  
Est. 1966 by members of the New Haven Foundation Distribution Committee.

Fund for Legal Assistance Association in Memory of James W. Cooper  
Est. 1990 by New Haven Legal Assistance Association Inc.

James W. Cooper Music Fund  
Est. 1989 by bequest of James W. Cooper.

Martha & Herman Copen Fund  
Est. 2004 by Herman Copen.

Judith R. Corchard Fund  
Est. 2011 by Wright Investors’ Service Inc.

Frances Somers Cornell Fund  
Est. 1994 by Frances Somers Cornell.

Robert A. & Nancy E. Correll Fund  
Est. 1993 by Robert and Nancy Correll.

John J. Crawford Fund  
Est. 2001 by The Regional Water Authority.

Crippled Children’s Aid Society Fund  
Est. 1986 by the Crippled Children’s Aid Society.

Critical Public Health Fund  
Est. 1988 by The Community Foundation for Greater New Haven.

Susan W. and Sumner McK. Crosby Jr. Fund  
Est. 2001 by Susan W. and Sumner Crosby Jr.

David W. Cugell & Christina Enroth-Cugell Fund  
Est. 2016 by David W. Cugell and Christina Enroth-Cugell

Ralph V. & Marguerite P. Currier Fund  
Est. 1979 by bequest of Ralph V. and Marguerite P. Currier.

Enos Curtin Fund  
Est. 1995 by Enos Curtin.

Anna Cutler Fund  
Est. 1957 by bequest of Anna Cutler.

Jacqueline E. D’Addio Fund  
Est. 2008 by Tracy D’Addio.

Ann & Robert Dahl Fund  
Est. 2008 by Ann and Robert Dahl.

J. Dwight & Anna E. Dana Fund  
Est. 1967 by bequests of J. Dwight and Anna E. Dana.

Maria Dana Fund  
Est. 1962 by bequest of Maria T. Dana.

Olive Louise Dann Fund  
Est. 1972 by bequest of Olive Louise Dann.

Robert B. Dannies Jr. & Priscilla S. Dannies Fund  
Est. 1997 by Priscilla S. and Robert B. Dannies.

**Susan & Gustave Davis Fund**  
**Est. 2017 by Susan and Gustave Davis.**

Nettie J. Dayton Fund  
Est. 1928 by bequest of Nettie J. Dayton.

Arthur Bliss Dayton Fund  
Est. 1991 by bequest of Elinor Bliss Dayton.

Julia B. DeCapua Fund  
Est. 1996 by bequest of Julia B. DeCapua.

Ted & Luisa DeLauro Community Fund  
Est. 2001 by Stanley B. Greenberg and Rosa L. DeLauro.

**Bitsie Clark Fund for the Arts**  
Est. 2017 by Barbara Lamb, Mimsie Coleman, Robin Golden, Betty Monz and Maryann Ott

The Bitsie Clark Fund for the Arts was established by the original five Bitsie “proteges.” It celebrates Frances (Bitsie) Clark’s contributions to and stewardship of the arts and cultural community of Greater New Haven. A Vassar grad, Bitsie served as executive director of the Arts Council of Greater New Haven for nearly two decades (1983-2002) and executive director of HomeHaven from 2011-2017.



John A. & Edna M. DeLeon Fund  
Est. 1991 by John A. and Edna M. DeLeon.

**Ernest R. & Janet B. DelMonico Family Fund**  
**Est. 2017 by Ernest and Janet DelMonico.**

Delta Sigma Theta New Haven Alumnae Scholarship Fund  
Est. 2006 by the New Haven Alumnae Chapter of Delta Sigma Theta.

Ann Pecora Diamond Fund  
Est. 2015 by Ann Pecora Diamond.

Wilton E. Dickerman Fund  
Est. 1945 by bequest of Wilton E. Dickerman.

Dickerman Family Fund  
Est. 1982 by bequest of Wilton E. Dickerman.

Janet Saleh Dickson Memorial Fund  
Est. 2001 by Johanna Dickson, Emma Dickson, Angela Shashoua, Aboud Bashy, Nan Ross and Frances Clark.

Barnett Dickstein Memorial Trust Fund  
Est. 1968 by bequest of Barnett Dickstein.

The Dinsmore Family Fund  
Est. 2008 by Teddi R. Dinsmore and Kristen R. Van Alstine.

Directors Discretionary Fund  
Est. 1980 by an anonymous donor.

Fund for the Dixwell Community House  
Est. 1992 by Dixwell Community House Inc.

Robert B. & Isabella E. Dodds Fund  
Est. 1976 by Robert B. Dodds.

Grace Donahue and Doris Feldman Fund #1  
Est. 1993 by bequest of Doris Feldman.

Grace Donahue and Doris Feldman Fund #2  
Est. 1993 by bequest of Grace Donahue.

Karen & Harold Donegan Fund  
Est. 2004 by Karen and Harold Donegan.

David Doolittle Fund  
Est. 1946 by Clarence L. Doolittle.

Clarence Doolittle Fund  
Est. 1967 by bequest of Helen R. Doolittle.

Frances C. Doolittle Fund  
Est. 2000 by bequest of Frances C. Doolittle.

Brian D’Orso Scholarship Fund  
Est. 2003 by Thomas P. and Susan M. D’Orso.

Elizabeth Doyle Memorial Scholarship Fund  
Est. 1985 by bequest of Eva C. Doyle.

East Rock Institute Endowment Fund  
Est. 2006 by East Rock Institute.

Arthur and Margaret Ebbert Memorial Fund  
Est. 1993 by bequest of Arthur Ebbert Jr.



Ecology, Environment and Alternative Energy Research Prize Fund  
Est. 2006 by an anonymous donor.

**ECHORN Fund**  
Est. 2017 by Marcella Nuñez-Smith.

Edelweiss Fund  
Est. 2009 by anonymous donors.

John A. Edmonds Scholarship Fund  
Est. 2013 by Nancy E. Hill.

Edwin & Maye Edmonds Scholarship Fund  
Est. 2001 by Edwin R. Edmonds.

Education Fund  
Est. 1981 by The Community Foundation for Greater New Haven.

H.R. Edwards, MD Fund  
Est. 206 by bequest of Mrs. Carol K. Edwards.

Robert R. & Anita Brand Eisner Fund  
Est. 1984 by Anita Brand Eisner.

Helmer N. Ekstrom Fund  
Est. 1994 by Helmer and Joanne Ekstrom and family and friends.

Andrew Eldredge Fund  
Est. 2016 by David and Stacey Eldredge.

Zarou Manoukian Elliot Scholarship Fund  
Est. 1990 by bequest of Ralph Gregory Elliot.

Ells Family Fund  
Est. 2014 by Kristina and Theodore Ells.

Seton Elm-Ivy Awards Endowed Fund  
Est. 2000 by Fenmore and Phyllis Seton.

Louise Endel Fund  
Est. 2011 by family and friends.

Henry F. English Fund  
Est. 1946 by Henry F. English.

Philip H. English Fund  
Est. 1986 by bequest of Philip H. English.

Katharine D. English Fund  
Est. 1986 by bequest of Katherine D. English.

Richard L. English Fund  
Est. 2011 by bequest of Richard L. English.

Richard L. English Fund for Birding Activities  
Est. 2011 by bequest of Richard L. English.

Environment and Human Health Inc. Fund  
Est. 2001 by Environment and Human Health Inc.

Ercolano Astorino Fund  
Est. 2009 by Helene Robbins.

ERJ Fund  
Est. 2015 by anonymous donors as a donor advised fund.

Bernard Ettlinger Fund  
Est. 1989 by bequest of Bernard Ettlinger.

Exemplary Teacher Professional Learning Community Program of the New Haven Public Schools Fund  
Est. 2012 by Robert and Bonnie Kreitler.

Warren Faller Fund  
Est. 2017 by Eleanor Warren Faller.

Eleanor & Henry Farnam Fund  
Est. 1998 by bequest of Eleanor Farnam.

Farrel Fund  
Est. 2004 by bequest of Franklin Farrel III.

Irene E. Feltman Fund  
Est. 1995 by Irene E. Feltman.

Nathaniel K. Fenollosa Fund  
Est. 2014 by Amy Fenollosa, family and friends.

Ellen Ferguson Memorial Fund  
Est. 2016 by the Branford Community Foundation.

Sarah M. Ferguson Fund  
Est. 2000 by Sarah M. Ferguson.

Ruth M. Ferry Fund  
Est. 2001 by bequest of Ruth M. Ferry.

Robert S. Fers Memorial Fund  
Est. 1998 by Mary Lou Stamp.

First Niagara Fund  
Est. 2016 by First Niagara Bank, now Key Bank.

First Niagara Homeownership Fund  
Est. 2016 by First Niagara Bank, now Key Bank.

Renee B. Fisher Foundation Fund  
Est. 2001 by Carol Fisher and Shelley Fisher Fishkin.

**Katrina Clark Fund**  
Est. 2017 by friends and family.

The Katrina Clark Fund was established in 2017 to honor and memorialize the life and work of Katrina Clark, longtime Executive Director of Fair Haven Community Health Center, now Fair Haven Community Health Care (FHCHC).

Proceeds from the fund will be distributed, per Katrina’s wishes, for the training and education of individuals committed to providing high quality, compassionate care to vulnerable patients in Greater New Haven. Priority will be given to FHCHC staff.



Milton Fisher Scholarship Fund  
Est. 2002 by the Renee B. Fisher Foundation.

Rose M. Fisher Memorial Fund  
Est. 2003 by bequest of Robert Sherman Fisher.

FleetBoston Community Renaissance Initiative  
Est. 2000 by FleetBoston Financial Foundation.

Anne Foley Fund  
Est. 1992 by bequest of Anne Foley.

Grace Foote Fund  
Est. 1974 by bequest of Grace Salisbury Foote.

George L. Fox  
Est. 1932 by bequest of George L. Fox.

Frew Family Fund  
Est. 2003 by Robert and Susan Frew.

Molly Rubin Fried Fund  
Est. 2009 by Diane and Walter Ariker.

Mary Taylor Friedler Memorial Fund  
Est. 1991 by Saul Friedler.

Friends of Boulder Knoll Fund  
Est. 2007 by Friends of Boulder Knoll.

Friends of East Rock Park Fund  
Est. 1998 by Friends of East Rock Park.

Friends of the New Haven Free Public Library Fund  
Est. 1974 by Friends of the New Haven Free Public Library.

Fund for the New Haven Green  
Est. 1987 by the Committee of the Proprietors of Common and Undivided Lands.

Gaines Family Fund  
Est. 2009 by Priscilla Gaines.

Samuel P. Gaines Fund  
Est. 1999 by Priscilla Gaines.

Murray Gallant Memorial Fund  
Est. 2001 by bequest of Murray Gallant.

Henry L. Galpin Fund  
Est. 1961 by bequest of Henry L. Galpin.

Ellen D. Galpin Fund  
Est. 1971 by bequest of Ellen D. Galpin.

Aspel and Seymour & Clara Gans Memorial Fund  
Est. 1988 by Clara Gans.

Garden Club of New Haven Fund  
Est. 1983 by Garden Club of New Haven.

Gates Fund  
Est. 1952 by bequest of Frank and Ross Gates.

Allison & Joshua Geballe Scholarship Fund  
Est. 2001 by Allison and Joshua Geballe.

General Fund, Wells Fargo Bank  
Est. 1948 by Union Trust Company.

General Fund, Bank of America  
Est. 1948 by Colonial Bank.

General Fund, Bank of America  
Est. 1948 by Connecticut Bank & Trust.

General Fund, Bank of America  
Est. 1948 by Connecticut National Bank.

General Fund, The Community Foundation for Greater New Haven Inc.  
Est. 1986 by The Community Foundation for Greater New Haven.

Getman Family Fund  
Est. 2000 by Christopher and Evelyn Q. Getman.

Christopher & Toddie (Evelyn) Getman Fund  
Est. 2003 by Christopher and Evelyn Q. Getman.

James & Patricia Gilbert Fund  
Est. 2005 by James and Patricia Gilbert.

Edmund K. Gilbert Fund  
Est. 1964 by bequest of Edmund K. Gilbert.

Samuel F. & Rose B. Gingold Fund  
Est. 1958 by Samuel Gingold.

Ginsberg Family Fund  
Est. 2001 by William and Kel Ginsberg.

Frederick J. Giovannini Memorial Scholarship Fund  
Est. 2013 by West Haven High School.

Girl’s Service Inc. Fund  
Est. 1979 by Girls Service of New Haven Inc.

Herman & Bess Glazer Scholarship Fund  
Est. 1979 by Herman Glazer.

GOGGA Fund  
Est. 2007 by Thomas L. and Jacquelyn M. Hutchison.

The Goldstein Fund  
Est. 2010 by Orit Goldstein.

Joseph Goldstein Memorial Legal Assistance Fellowship Fund (The Goldstein Fellowship Fund)  
Est. 2001 by The Goldstein Fellowship Committee.

Walter Goodrich Fund  
Est. 1959 by bequest of Walter H. Goodrich.

Israel & Adele Gordon Fund  
Est. 2006 by Israel and Adele Gordon.

**Joseph W. Gordon & Mark Bauer Fund**  
Est. 2017 by Joseph W. Gordon and Mark Bauer.

Winkler C. Gosch & Virginia D. Gosch Fund  
Est. 2006 by Winkler C. Gosch.

Ruth & Charles Grannick Jr. Fund  
Est. 2001 by Ruth B. Grannick.

Ulysses S. Grant Foundation Fund  
Est. 1981 by Ulysses S. Grant Foundation.

Grave Family Fund  
Est. 1987 by Richard M. Grave.

Edwin S. Greeley Fund  
Est. 1963 by bequest of Jennie E. Greeley.

Ruth W. Greenberg Fund  
Est. 1993 by bequest of Ruth W. Greenberg.

Green Grass Fund for Long Wharf Theatre  
Est. 2010 by an anonymous donor.

Ernest B. Gridley Fund  
Est. 1951 by bequest of Ernest B. Gridley.

Whitney & Mary Griswold Fund  
Est. 1998 by Mary Griswold.

Griswold Homecare Fund  
Est. 2009 by Lesley Mills.

Griswold LifeTales Fund  
Est. 2001 by Lesley Mills.

Albert L. Haasis Fund  
Est. 1947 by bequest of Albert L. Haasis.

Harriet B. Hall Fund  
Est. 1958 by bequest of Harriet B. Hall.

Caroline C. Hall Fund  
Est. 1966 by William B. Hall.

Hamden Library Gift Fund  
Est. 1982 by the Hamden Library.

Henry A. Hamel Fund  
Est. 1997 by bequest of Henry A. Hamel.

Senator Lucy T. Hammer Scholarship Fund  
Est. 2001 by memorial gifts.

Albert Hamowitz Fund  
Est. 1995 by Albert Hamowitz.

Hannah’s Dream Endowment Fund  
Est. 2000 by Chris and Karen Kristan, New Haven Board of Park Commissioners, and Easter Seals Goodwill Industries Rehabilitation Center Inc.

Henry S. Harrison Fund  
Est. 1986 by Henry S. Harrison.

Harvey Fund  
Est. 1965 by Elizabeth K. Harvey.

Elizabeth Kingsley Harvey Fund  
Est. 2009 by bequest of Elizabeth K. Harvey.

Katharine Farnam Harvey Fund  
Est. 1969 by bequest of Katharine Farnam Harvey.

Haven Fund  
Est. 2013 by Harry Solomon.

Haven Fund II  
Est. 2013 by Harry Solomon.

Health Services Fund  
Est. 1979 by bequest of Grace E. Marvin.

Healthy Start/Male Involvement Endowment Fund  
Est. 2004 by many donors.

Louis L. Hemingway Fund  
Est. 1972 by gifts from family and friends.

Yandell Henderson Fund  
Est. 1945 by bequest of Yandell Henderson.

**Ernest R. & Janet B. DelMonico Family Fund**  
Est. 2017 by Ernest and Janet DelMonico.

New Haven, Connecticut has proudly served as the home of DelMonico Hatter since 1908. The iconic institution is a family-owned affair, founded by Ernest DelMonico and operated by his son Joseph (pictured below) for more than seventy years, until his death in 2001 at the age of ninety.

Today, the store is operated by Ernest and Ben, third- and fourth-generation DelMonicos. It celebrates a dedicated clientele of local, national and international hat enthusiasts who appreciate the ability to select from a large and specialized inventory. New Haven’s DelMonico Hatter is one of America’s premier sellers of fedoras and men’s caps.



Hereld Fund  
Est. 2011 by Peter Hereld.

Eleanor M. Herpich Fund  
Est. 2011 by bequest of Eleanor M. Herpich.

Higher Heights Youth Empowerment Programs Fund  
Est. 2008 by Higher Heights Youth Empowerment Programs Inc.

Deborah A. Highsmith Memorial Scholarship Fund  
Est. 1991 by Carlton Highsmith.

Hillhouse Alumni Scholarship Fund  
Est. 1993 by Mark Shafer.

**Craig M. Hillo Fund**  
Est. 2017 by Joan and Carmine Hillo.

Muriel Hirshfield Scholarship Fund  
Est. 1963 by Jack Hirshfield.



Historic Structures Fund  
Est. 1985 by Historic Structures Unlimited Inc.

Florence A. Hoadley Fund  
Est. 1970 by bequest of Florence A. Hoadley.

John Elwyn Hobbs Fund  
Est. 1971 by bequest of Harriet C. Hobbs.

William & Barbara Hoblitzelle Fund  
Est. 1987 by bequest of William E. and Barbara B. Hoblitzelle.

Hoblitzelle Family Fund  
Est. 1990 by bequest of William E. and Barbara B. Hoblitzelle.

Hodgson/Leventhal Fund  
Est. 1990 by Beverly Hodgson and John Leventhal.

Hodgson/Leventhal Fund #2  
Est. 2017 by Beverly Hodgson and John Leventhal.

James W. Hodson Family Fund  
Est. 1973 by the James W. Hodson Charitable Foundation.

Nathan and Ellen Holbrook  
Est. 1960 by bequest of Henrietta S. Holbrook.

Elizabeth R. Hooker Fund  
Est. 1959 by Elizabeth R. Hooker.

Clarence R. Hooker Fund  
Est. 1945 by bequest of Clarence R. Hooker.

Richard Hooker Fund  
Est. 2000 by Mildred Hooker.

Julia S. Horner Fund  
Est. 1928 by bequest of Leonard S. Horner.

Nancy I. Hoskins Fund  
Est. 2011 by Anne Emmet.

Harry S. Huggins Memorial Scholarship Fund  
Est. 1998 by Marcie, Herbert and Mariam Setlow.

Hulbert Family Fund  
Est. 2014 by Carolyn H. Cary.

Anna & Argall Hull Fund  
Est. 1975 by bequest of Argall L. and Anna G. Hull.

John L. & Pauline E. Huwiler Memorial Fund  
Est. 1997 by Paul F. and Joan T. Huwiler.

Imperato Family Scholarship Fund  
Est. 2003 by Eugene Imperato.

William Brinckerhoff Jackson Memorial Fund  
Est. 1982 by bequest of Rose Herrick Jackson.

John Herrick Jackson Fund  
Est. 1951 by bequest of John Herrick Jackson.

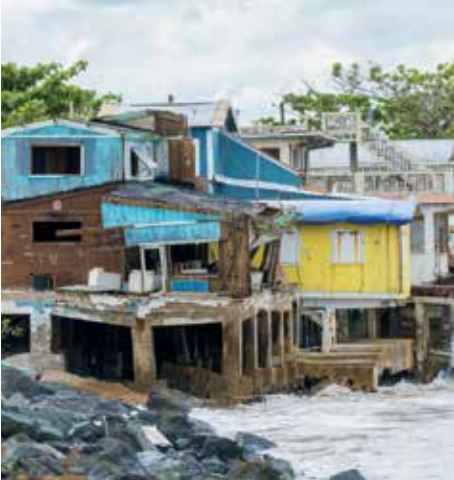
John H. & William B. Jackson Memorial Fund  
Est. 1959 by John Day Jackson.

John Day Jackson Fund  
Est. 1961 by an anonymous donor.

Richard Seymour Jackson Fund  
Est. 1974 by the Register Publishing Company.

**ECHORN Fund**  
Est. 2017 by Marcella Nuñez-Smith.

Hurricanes Irma and Maria devastated the Caribbean in the summer of 2017, including Puerto Rico, the US Virgin Islands, the British Virgin Islands, St. Martin/St. Maarten, Barbuda, Dominica and many other islands. Beyond the immediate need for life sustaining supplies, it was clear that local infrastructures would require long-term support to rebuild and resume the care of millions of Caribbean people. To aid in the rebuilding effort, The ECHORN (Eastern Caribbean Health Outcomes Research Network) Fund was established at The Foundation. Its purpose is to help local Caribbean nonprofit organizations meet the health and well-being needs of their communities. Organizations can use funds to replace destroyed or lost medical supplies, coordinate outreach to rebuild client databases, upgrade facilities to solar power or other renewable energy sources, physically relocate to a new space, or rebuild other vital resources lost after the storm.



Rose H. Jackson Memorial Fund  
Est. 1977 by Mrs. William B. Reese and Mrs. Rose Jackson Sheppard.

John D. Jackson Memorial Fund  
Est. 1961 by the Register Publishing Company.

Burton & Susan Jaynes Fund  
Est. 2007 by Susan and Burton Jaynes.

Benjamin Jepson School Fund  
Est. 2006 by David P. and Kristen A. Bechtel.

Birgitta W. Johnson Fund  
Est. 2013 by bequest of Birgitta W. Johnson.

Birgitta Johnson Campership Fund  
Est. 2014 by Fellowship Place.

Estelle A. Johnson Fund  
Est. 1962 by bequest of Estelle A. Johnson.

Elsa T. Johnson Fund  
Est. 1993 by Kerala Johnson Snyder.

Harry H. Johnson Fund  
Est. 2000 by Barbara Dahl and Kevin McCarthy.

Henry S. Johnson Fund  
Est. 1995 by Henry S. Johnson.

Henry S. Johnson Trust Fund  
Est. 1997 by Henry S. Johnson.

Oscar W. Johnson Sr. Fund  
Est. 1998 by Oscar W. Johnson Sr. Foundation.

Daniel L. Jones Fund  
Est. 1988 by Helen W. Jones.

Helen W. Jones Fund  
Est. 2011 by bequest of Helen W. Jones.

Lulu & William Jones Fund  
Est. 1986 by Lulu B. Jones.

**Judy Fund**  
Est. 2017 by Judith Sparer.

Carol and James Kasper Fund  
Est. 2009 by James Kasper.

Kelley Memorial Fund  
Est. 2004 by Brooks M. and Suzanne Kelley.

Kelley Family Fund  
Est. 2014 by the Stonebridge Foundation.

Jean R. Kelley Fund  
Est. 1997 by Jean R. Kelley.

Carolyn Kellogg Memorial Fund  
Est. 1955 by gifts in memory of Carolyn Kellogg.

Mildred A. Kelly Fund  
Est. 1966 by bequest of Mildred A. Kelly.

Frank Kenna Jr. Fund  
Est. 2016 by the Frank Kenna Trust.

Gilbert T. Kenna Fund  
Est. 2009 by bequest of Gilbert T. Kenna.

Harry B. Kennedy & Ann H. Kennedy Fund  
Est. 2001 by Ann H. Kennedy.

Henry Morgan Keyes Fund  
Est. 2004 by Henry Morgan Keyes.

Helen & Morgan Keyes and Eunice Keyes Medlyn Fund  
Est. 2003 by Helen and H. Morgan Keyes and Eunice Keyes Medlyn.

Beverly Hilton Kimbro Scholarship Fund  
Est. 2007 by Warren Kimbro.

F. Kirschner Fund  
Est. 1942 by bequest of Fannie H. Kirschner.

Lucy M. Kittredge Fund  
Est. 1970 by bequest of Lucy M. Kittredge.

Kiwanis Club Fund  
Est. 1985 by the Kiwanis Club of New Haven.

Karen E. Knudsen Memorial Fund  
Est. 2001 by M. J. Knudsen.

Lillian & Henry A. Konopacke Fund  
Est. 2013 by bequest of Henry A. Konopacke.

Edward Konowitz Family Fund  
Est. 2007 by Edward Konowitz.

David A. Krett Jr. Fund  
Est. 2012 by David A. Krett Jr.

**Kreutter Family Fund**  
Est. 2017 by David K. and Karole J. Kreutter.

Mr. & Mrs. Lester A. Kuss Fund  
Est. 1999 by Mrs. Lester A. Kuss.

Landes Memorial Fund for the Arts  
Est. 2006 by anonymous donors.

David T. Langrock Old Masters Art Fund  
Est. 1982 by the David T. Langrock Foundation.

Anna K. & Louis Lapides Fund  
Est. 1991 by bequest of Anna K. Lapides.

John Laslett Fund  
Est. 1971 by bequest of John Laslett.

Sara Lavery Fund  
Est. 1971 by bequest of Sally Brown Bradley.

Thomas & Elizabeth Lazay Charitable Fund  
Est. 2007 by Thomas J. and Elizabeth V. Lazay.

Anne & Steven Lazrove Fund  
Est. 1993 by Anne and Steven Lazrove.

Stanley A. and Margaret R. Leavy Fund  
Est. 1996 by Stanley A. Leavy.

Wilson H. Lee Fund  
Est. 1950 by bequest of Wilson H. Lee.

Lee Scholarship Fund  
Est. 1999 by Marietta and Leighton Lee, II and the Lee family.

Catherine Kennedy Foundation for Leeway Fund  
Est. 1998 by Leeway Inc.

Marvin Lender Scholarship Fund  
Est. 1991 by Marvin and Helaine Lender.

Martha F. Leonard Fund  
Est. 2006 by bequest of Martha F. Leonard.

Letters for My Children Fund  
Est. 2001 by Russel H. Goddard.

Diane and Burton Levey Family Fund  
Est. 2016 by their children Patricia Levey Lebow and John Levey.

Selma M. Levine Fund  
Est. 1977 by bequest of Selma M. Levine.

Susan M. Lewin Women’s Leadership Fund  
Est. 2013 by Lesley Mills and other donors.

Helen M. Leyerzapf Fund  
Est. 1978 by bequest of Helen M. Leyerzapf.

Life Haven Fund  
Est. 2009 by Life Haven Inc.

Ruth C. Lindwall Fund  
Est. 1988 by Ruth C. Lindwall.

Elsa Guttman Links and Leo Links Fund  
Est. 1982 by bequest of Elsa G. and Leo Links.

Elsa Guttman and Leo Links Scholarship Fund  
Est. 1983 by bequest of Elsa G. and Leo Links.

Beatrice Shapiro Lipsher Fund  
Est. 1990 by gift from Tyler Cooper and Alcorn.

Judith A. Lisi Fund  
Est. 1992 by the Connecticut Association for the Performing Arts.

Benjamin D. Liveten Fund  
Est. 2002 by bequest of Benjamin D. Liveten.

Mary G. & Isaac S. Liveten Fund  
Est. 1990 by Benjamin D. Liveten.

John & Margaret Loehr Family Fund  
Est. 2007 by John and Margaret Loehr.

Charles Long & Roe Curtis Family Fund  
Est. 2011 by Charles Long and Roe Curtis.

Long Wharf Future Fund  
Est. 1982 by gifts to the Long Wharf Campaign.

Lord/Kubler Fund “A” for New Work at Long Wharf Theatre  
Est. 2014 by the Seedlings Foundation.

Frances L. Loro Hamden High School Scholarship Fund  
Est. 2000 by bequest of Frances L. Loro.

Jean Lovell Fund  
Est. 1994 by New Haven Scholarship Fund Inc.

**Shea Lovell DA Fund**  
Est. 2017 by Patricia Shea and Peter Lovell.

Stuart M. Low Fund  
Est. 1999 by Stuart M. Low.

Lowery Family Scholarship Fund  
Est. 2016 by Mary F. Lowery.

Luongo Family Charitable Fund  
Est. 2006 by John A. Luongo and Doris Luongo.

John, Cecilia & Susan Lyons Fund  
Est. 1986 by John and Cecilia Lyons.

Frederick Machlin Memorial Fund  
Est. 1975 by memorial gifts from the Armstrong Rubber Company.

Margaret B. Mack Fund  
Est. 1995 by bequest of Margaret B. Mack.

Madison Surf Club Inc. Fund  
Est. 1967 by the Madison Surf Club Inc.

Maiberger Family Fund  
Est. 2007 by Richard and Annette Maiberger.

Mailhouse Family Fund  
Est. 1991 by Robert and Joyce Mailhouse.

Nario Malberg Family Fund  
Est. 2017 by Luis Nario and Norka Malberg.

Walter E. & Anna L. Malley Fund  
Est. 1942 by Walter E. Malley.

Anna L. Malley Recreational Fund  
Est. 1943 by Walter E. Malley.

Sarah Alison Shufro Mandelkern Fund (“Sarah’s Fund”)  
Est. 2001 by Cathy Fran Shufro.

Janet Marlin Fund  
Est. 1971 by bequest of Janet Marlin.

Claire M. Maroney Fund  
Est. 2006 by bequest of Claire M. Maroney.

Zachary and Laura Martinez Fund  
Est. 2013 by Zachary and Laura Martinez.

Marian Ambrulevich Martone Memorial Scholarship Fund  
Est. 2006 by Marian F. Martone.

Martin-Pescatore Family Fund  
Est. 2003 by Anne Martin and John Pescatore.

Vincent P. Martone Memorial Scholarship Fund  
Est. 2012 by Marian F. Martone.

**Walter Tischbein Scholarship Fund**  
Est. 2017 by William Lee on behalf of the Lee Company.

Walter (Walt) Tischbein joined the Lee Company in 1985, after famously showing up for a job interview during the arrival of Hurricane Gloria. As a much loved Lee employee, role model and mentor, Walt was a strong believer in education and hosted many groups of high school students to help them learn about the business world. The Tischbein scholarship was established by the Lee Company in Walt’s honor after he passed away on Christmas morning, 2017. Walt’s life will be forever celebrated by the permanent fund that aligns with his interests in life and his concern for his fellow Lee Company employees, their children and their educations. The scholarship is open to children of Lee Company employees, with a preference to those studying a STEM discipline and who have a track record of community service.





John S. Martinez and Family Scholarship Fund  
Est. 2003 by Ariel Martinez.

John M. & Adella S. Marvin Fund  
Est. 1979 by bequest of Grace E. Marvin.

Amy Linton Mather — West Haven Pound Pals Inc. Fund  
Est. 2002 by Judy Rettig and Christine Santoro.

M. Anne & Jean B. Mauro Fund  
Est. 1998 by Anne and Jean B. Mauro.

New Haven Mayor’s Fund for Youth and Seniors  
Est. 2014 by Mayor Toni Harp.

McMahon Family Fund  
Est. 1991 by Mary I. Smith.

McNerney Witek Family Fund  
Est. 1997 by Helen McNerney.

Esther E. Mead Fund  
Est. 1983 by bequest of Esther E. Mead.

Eunice Keyes Medlyn Fund  
Est. 2003 by Eunice Keyes Medlyn.

Peter J. Meehan and Prudence F. Meehan Fund  
Est. 2013 by Peter J. and Prudence F. Meehan.

Parviz and Bahijeh Mehri Fund  
Est. 1993 by Cyrus Mehri.

Ruth A. Meier Fund  
Est. 1989 by bequest of Allen S. Meier.

Alice Pack Melly Fund  
Est. 2007 by Alice P. Melly.

Anna H. Merwin Fund  
Est. 1962 by bequest of Anna H. Merwin.

Jerome & Roslyn Milstein Meyer Family Fund  
Est. 2001 by Jerome and Roslyn Milstein Meyer.

Jerome H. Meyer Education Fund for Long Wharf Theatre  
Est. 2015 by Long Wharf Theatre.

Milstein Meyer Fund for Long Wharf Theatre Endowment  
Est. 2008 by Jerome and Roslyn Milstein Meyer.

Roslyn Milstein Meyer Women In Transition Fund  
Est. 2014 by gifts of friends.

Daniel & Judith Miglio Fund  
Est. 2008 by Daniel and Judith Miglio.

Milford Academy Endowment Fund  
Est. 1998 by many donors.

Louise Miller Fund  
Est. 2014 by Randall Miller and Scott Miller.

Dr. Tammis Sholin Miller Scholarship Fund  
Est. 1995 by the estate of Dr. Tammis Sholin Miller and gifts of family and friends.

Paul Millette Memorial Scholarship Fund  
Est. 1987 by Lenore and Francis Millette.

Dorothy M. Mills Fund  
Est. 1969 by Dorothy M. Mills.

Mary B. Mitchell Fund  
Est. 1966 by bequest of Mary B. Mitchell.

Francis J. Mitchell Fund  
Est. 1967 by bequest of Francis J. Mitchell Jr.

George W. Mixter Fund  
Est. 1977 by bequest of George W. Mixter.

Arthur E. Moore III Memorial Scholarship Fund  
Est. 1989 by Beverly Kimbro and gifts from family and friends.

**The Ohlbaum Immigration Assistance Fund**

Est. 2017 by Edward Coady; Rebecca and Michael Morris; and Shoshana, Macoy and Spencer Ohlbaum

The Ohlbaum Immigration Assistance Fund is a donor advised fund established in memory of Viola S. and Emerich Ohlbaum. Viola and Emerich were survivors of Auschwitz and labor camps during WWII; their parents and a number of siblings were killed at Auschwitz and other concentration camps. Buoyed by their parent’s lessons of resilience and the passage of the Truman Act in late 1945, they each made their way to the United States where they were welcomed as refugees.

Mr. and Mrs. Ohlbaum achieved a version of the American Dream, founding what became a small string of bakeries called Em’s Bake Shop and raising six children. They imbued their grandchildren with an enthusiasm for all America could provide and a commitment to the value that refugees and immigrants bring to our country and society.

The Ohlbaum grandchildren established this fund in their grandparents’ memory to provide assistance to new immigrants with the hope they too can thrive in our community.



Charles G. Morris Fund  
Est. 1970 by the Friends of Boys Inc.

Johnnie Mouning Memorial Scholarship Fund  
Est. 2008 by George Richard II.

Bryant and Sara Munson Fund  
Est. 2016 by Bryant and Sara Munson.

Kathryn Murray-Phyllis McDowell Family Fund  
Est. 1995 by Phyllis McDowell.

Murtha Cullina LLP Scholarship Fund  
Est. 1999 by Murtha Cullina LLP.

My Brothers Heart — The Joshua French Memorial Foundation Fund  
Est. 2010 by Rebekah Horn.

Ruth I. Myers Fund  
Est. 1961 by bequest of Ruth I. Myers.

NAACP Haitian Fund  
Est. 2010 by the Greater New Haven NAACP.

Arthur and Ruth Nabstedt Fund  
Est. 1975 by bequest of Arthur T. Nabstedt.

Susan J. Bryson & Laurence P. Nadel Fund  
Est. 2002 by Susan J. Bryson and Laurence P. Nadel.

Carol DiBenedetto Nardini Fund  
Est. 2000 by Carol Nardini.

Father Howard Nash Memorial Fund  
Est. 2002 by Robert Mantilla.

Neighborhood Endowment Fund  
Est. 1992 by The Community Foundation for Greater New Haven.

Neighborhood Music School Dr. Regina M. Lily Warner Fund  
Est. 2008 by Neighborhood Music School.

Thomas Nesbit Jr. and Anna C. Nesbit Fund  
Est. 2014 by bequest of Thomas Nesbit Jr. and Anna C. Nesbit.

Netter/Boone Family Fund  
Est. 2004 by Ronald and Susan Netter.

Mildred E. Neumann Memorial Scholarship Fund  
Est. 2000 by Emma Neumann.

NewAlliance Bank Scholarship Fund  
Est. 1989 by New Haven Savings Bank, now KeyBank.

NewAlliance Bank Education Fund  
Est. 1989 by New Haven Savings Bank, now KeyBank.

New Haven Bread Fund  
Est. 1980 by First Church of Christ, Trinity Church on the Green, Dawson Bread Fund.

New Haven Foundation Fund  
Est. 1981 by The New Haven Foundation, now The Community Foundation for Greater New Haven.

New Haven Network Public Education Fund  
Est. 1986 by School Volunteers for New Haven Inc.

New Haven Paint & Clay Club Fund  
Est. 1982 by New Haven Paint & Clay Club Inc.

New Haven Scholarship Fund  
Est. 1988 by New Haven Scholarship Fund Inc.

New Haven Symphony Orchestra Fund  
Est. 1999 by New Haven Symphony Orchestra Inc.

New Haven Teachers Fund  
Est. 2012 by New Haven Investment Fund.

**New Haven Venture Fund**  
Est. 2017 by The RISC Foundation Inc. and The New Haven Investment Fund, LLC.

Newton Family Fund  
Est. 2010 by David I. Newton.

New Ways Fund  
Est. 2009 by Charles Pillsbury.

North Haven High School Excellence in Music Fund  
Est. 2013 by anonymous donors.

Donald H. & Frances M. Nugent Fund  
Est. 1993 by Frances M. Nugent.

Arthur M. O’Brasky Scholarship Fund  
Est. 1993 by bequest of Arthur and Annette O’Brasky.

Sara Elizabeth O’Connor Fund  
Est. 2003 by Peter and Elizabeth Demir.

**Ohlbaum Immigration Assistance Fund**  
Est. 2017 by Edward Coady; Rebecca and Michael Morris; Shoshana, Macoy and Spencer Ohlbaum.

Nicholas D. Ohly & Sara Huntington Ohly Fund  
Est. 2008 by the bequest of Nicholas D. Ohly.

Oliver & Nelson Family Fund  
Est. 2008 by Sara O. Nelson.

John J. Opalinski Jr. Memorial Scholarship Fund  
Est. 1995 by bequest of John J. Opalinski Jr.

Ophelia Fund  
Est.1986 by Flora J. Calhoun.

Henry C. Oppen Fund  
Est. 2003 by bequest of Henry C. Oppen.

Optimates Society Fund  
Est. 2013 by Matthew Medearis.

Orchestra New England Music Director and Sponsorship Endowment Fund  
Est. 1998 by Anne and Jean B. Mauro.

Ruth L. Osterweis Fund  
Est. 1983 by memorial gifts from family.

Outer Island Fund for Education and Research  
Est. 2003 by bequest of Elizabeth Hird.

Oxford Education Fund  
Est. 1996 by bequest of an anonymous donor.

Helen L. Palmer ‘Spirit of the Foundation’ Fund  
Est. 2005 by The Community Foundation for Greater New Haven.

Paula and Michael Panik Arts and Education Fund  
Est. 2009 by Michael and Pauline Panik.

Mary Jane and Ciro Paoletta Fund  
Est. 1987 by Philip Paoletta.

Cynthia M. Parker Fund  
Est. 2012 by Cynthia M. Parker.

Charles J. Parker Memorial Fund  
Est. 1980 by Elise O. Parker.

Partnership for Aging Fund  
Est. 1999 by several nonprofits serving the elderly.

The Partnership for Youth Fund  
Est. 1997 by an anonymous donor.

Partyka Family Fund  
Est. 1996 by Mildred Partyka.

Elisa D. Pasqualoni Memorial Fund  
Est. 1999 by Fred Pasqualoni.

PATH Fund  
Est. 2016 by Maysa Akbar.

Peace & Social Justice Fund  
Est. 2008 by Joy Gordon.

H. Pearce Family Scholarship Fund  
Est. 1999 by Herbert H. Pearce.

Pearce-Fleming Family Fund  
Est. 2006 by Barbara Pearce and Norman Fleming.

Sara G. Peck Fund  
Est. 1999 by bequest of Sara G. Peck.

Rose V. Pelliccia Fund  
Est. 1978 by bequest of Rose V. Pelliccia.

People’s Bank Fund  
Est. 1984 by People’s Bank.

James Perillo Education Fund  
Est. 2014 by the Board of The Community Foundation for Greater New Haven and other donors.

Simon Persky Fund  
Est. 1963 by bequest of Simon Persky.

Edward L. Peters Memorial Scholarship Fund  
Est. 2000 by John F. Peters.

Catherine P. and Edward Petraiuolo Jr. Fund  
Est. 2009 by Catherine P. and Edward Petraiuolo Jr.

John P. & Cora E. Phelps Fund  
Est. 1962 by bequest of Emma P. Pelton.

Barnet & Sharon Phillips Charitable Fund  
Est. 2004 by Barnet and Sharon Phillips.

Dorothy Pickop Fund  
Est. 1994 by bequest of Dorothy Pickop.

Mildred P. and Henry H. Pierce Jr. Fund  
Est. 2002 by Katherine C. Pierce.

Laetitia V. Pierson Fund  
Est. 1993 by bequest of Laetitia V. Pierson.

Pikaart-Vaughan Family Fund  
Est. 2002 by Edward and Margaret Pikaart.

**Ashleigh Ann Rector Memorial Scholarship**

Est. 2017 by Ashleigh’s mother Laurel Lopossa and brother Daniel Rector.

Passionate — that is the one word that Laurel Lopossa uses to describe her daughter Ashleigh who tragically passed away from an overdose in September 2016.

Ashleigh was an avid snowboarder and taught classes at Killington Ski Resort in Vermont. She inspired many new snowboarders, and her love for the sport and her students always showed.

Friends and family describe Ashleigh as strong-willed, always being up for adventure, and fearless. She was kind, honest and “always looking out for others.”

The Ashleigh Ann Rector Memorial Scholarship was established to provide scholarship funds to a graduating student from Hamden High School who is interested in snowboarding and winter sports and in pursuing a career in psychology, social work and/or addiction counseling.



Mettie B. Platt Fund  
Est. 1957 by bequest of Mettie B. Platt.

New Haven Police Fund  
Est. 2014 by L.H. Brenner Inc.

Glenn J. Pollard Community Fund  
Est. 2011 by Jared Pollard and family.

Philip Pond Fund  
Est. 1964 by bequest of Philip Pond.

Mildred Pond Fund  
Est. 1998 by bequest of Mildred Pond.

Helen S. Porter Fund  
Est. 1962 by bequest of Helen S. Porter.

Gillen Powers Family Fund  
Est. 2015 by Angela and William Powers.

David G. Powrie Fund  
Est. 2013 by David G. Powrie.



David G. Powrie Fund #2  
Est. 2015 by bequest of David G. Powrie.

Progreso Latino Fund  
Est. 2003 by Frances and John Padilla.

Promising Scholars Fund  
Est. 2007 by the Board of the Promising Scholars Fund.

Shirley Martin Prown Fund  
Est. 2000 by the Friends of Case Memorial Library.

Bob Pryde Scholarship Fund  
Est. 1976 by bequest of Dorothy M. Pryde.

Dorothy M. Pryde Fund  
Est. 1976 by bequest of Dorothy M. Pryde.

Dorothy M. Pryde Scholarship Fund  
Est. 1976 by bequest of Dorothy M. Pryde.

Mary W. Pryde Fund  
Est. 1976 by bequest of Dorothy M. Pryde.

Mary W. Pryde Scholarship Fund  
Est. 1976 by bequest of Dorothy M. Pryde.

Mary W. and Robert D. Pryde Library Fund  
Est. 1976 by bequest of Dorothy M. Pryde.

Robert D. Pryde Fund  
Est. 1976 by bequest of Dorothy M. Pryde.

Robert D. Pryde Scholarship Fund  
Est. 1976 by bequest of Dorothy M. Pryde.

Puddicombe Fund  
Est. 2015 by Frances Puddicombe.

Push Fund  
Est. 2016 by Eugénie and Bradford Gentry.

Quinnipiac River Fund  
Est. 1990 by settlement between the National Resources Defense Council, Connecticut Fund for the Environment, and Upjohn Corporation.

Donald Baker Quint Memorial Fund  
Est. 1996 by Bernice and Raymond Quint.

Richard A. Rathbone Memorial Fund  
Est. 1989 by Mrs. Richard A. Rathbone.

Arthur Ratner Scholarship Fund  
Est. 2012 by family, friends and classmates.

Edith P. Rausch Fund  
Est. 1993 by bequest of Edith P. Rausch.

Rayford Cafferty Fund  
Est. 2002 by Laura Freebairn-Smith, Brett Rayford and other donors.

Read Revolution College Book Fund  
Est. 2010 by Marc Michaelson and other donors.

Read To Grow Fund  
Est. 1998 by Roxanne and Kevin Coady and other donors.

**Ashleigh Ann Rector Memorial Scholarship Fund**  
**Est. 2017 by Ashleigh’s mother Laurel Lopossa and brother Daniel Rector.**

Harriet M. Redfield  
Est. 1950 by bequest of Harriet M. Redfield.

Refugee Reunification Project Fund  
Est. 2005 by Amanda Edmonds, Abja Midha, Elora Mukherjee and Vivek Sriram.

Rehabilitation Center Fund  
Est. 1983 by the Rehabilitation Center.

Mary A. & Robert S. Reigeluth Fund  
Est. 1991 by Mr. and Mrs. Robert S. Reigeluth.

**Community Now More Than Ever Fund**  
Est. 2017 by The Community Foundation *for* Greater New Haven

In 2017, The Community Foundation established a fund to underscore the importance of this moment in our history for our community to act as one. The Fund represents a collective recommitment to one another and to our shared belief that we can build a stronger future for Greater New Haven by acting together. Contributions to the fund exceeded \$100,000 and donors were able to either make immediate grants to organizations and programs of their choosing, or to designate their gifts toward a Foundation priority, such as the arts, local nonprofit press, women’s reproductive rights, criminal justice reform, eliminating racial and ethnic health disparities, assisting immigrants, and ensuring healthcare access.

The Foundation is continuing to invite our community to invest in our region and band together through this fund. The Foundation will continue to advocate strengthening our connections, embracing and supporting those at the margins, and creating a future where the many and not just the few will have the opportunity to build a better life.



Marion Cullen Reilly Scholarship Fund  
Est. 2004 by Maureen Reilly.

Maureen A. Reilly Fund  
Est. 2004 by bequest of Maureen A. Reilly.

Pamela & Ronald Reis Family Fund  
Est. 1981 by Ronald and Pamela Reis.

Resch Family Fund  
Est. 2004 by Paula and Richard Resch.

Responsible Parenting Fund  
Honoring Robert G. LaCamera, MD  
Est. 1998 by family, friends and colleagues of Dr. Robert G. LaCamera.

Mary Jane Reynolds Fund  
Est. 1996 by bequest of Mary Jane Reynolds.

Frank Rice Memorial Fund  
Est. 1985 by bequest of Frank Rice.

Florence Rice Fund  
Est. 2014 by bequest of Florence Rice.

Richardson Charitable Fund  
Est. 2007 by Paul G. and Joan W. Richardson.

Pauline & Frank Richard Fund  
Est. 1992 by Pauline Richard.

Rike Fund  
Est. 1978 by Lawrence M. Noble Jr.

**RISC Foundation MRI Fund**  
**Est. 2017 by The RISC Foundation Inc.**

’r kids Family Center  
Est. 2011 by an anonymous donor.

Constance Robert Fund  
Est. 2008 by Paul E. Robert.

Rebecca Satterlee Robbins Scholarship Fund  
Est. 1996 by Lt. Col. Gerald Robbins.

Nathanael V. Robert Fund  
Est. 2009 by Clare and Patrick Robert.

Helen H. Roberts Fund  
Est. 1952 by Helen H. Roberts.

Joseph H. and Barbara R. Roberts Fund  
Est. 1996 by bequest of Joseph H. Roberts.

Caroline V. Robertson Fund  
Est. 1987 by bequest of Caroline V. Robertson.

Jean-Michel Robert Fund  
Est. 2008 by Elisabeth B. Robert.

Babette Rogol Scholarship Fund  
Est. 1993 by the Babette Rogol Scholarship Inc.

Rhonna and Brian Rogol Fund  
Est. 2016 by Rhonna and Brian Rogol.

Frederick Talmadge and Mary Ogden Rolfe  
Est. 1961 by bequest of Clarence E. Rolfe.

Jared Rosner Memorial Fund  
Est. 2008 by J. Patrick Carley III and Pio A. Imperati.

Margaret M. Rowland Fund  
Est. 1959 by Daisy MacDonald.

Rozett Family Fund  
Est. 2015 by Jean and Ronald Rozett.

Ruggiero “Forever In The Light” Fund  
Est. 2005 by Sal Annunziato.

Joseph Ruggiero Scholarship Fund  
Est. 2012 by bequest of Joseph B. Ruggiero.

Marion M. Russell Fund  
Est. 2013 by Marion M. Russell.

Sacco Family Fund  
Est. 1996 by Carol and Humbert V. Sacco Jr.

Sage Services of Connecticut Fund  
Est. 1983 by Sage Services of CT.

Saint Ambrose Music Club Fund  
Est. 1983 by the Saint Ambrose Music Club.

Gustave R. Sattig Fund  
Est. 1951 by bequest of Gustave R. Sattig.

Ilene M. Saulsbury Fund  
Est. 2005 by Ilene M. Saulsbury.

Curtis M. Saulsbury Scholarship Fund  
Est. 2001 by Robert H. Saulsbury Jr.

Grace P. Scalese Award Fund  
Est. 1999 by Fred J. Pasqualoni.

David R. Schaefer and Janet C. Hall Fund  
Est. 2014 by Janet C. Hall and David R. Schaefer.

Priscilla A. Schaeneman Fund  
Est. 2012 by transfer of assets from the Cornell University Donor Advised Fund of Priscilla Schaeneman for the purpose of giving locally.

Peter & Judith Schurman Fund  
Est. 1984 by Peter and Judith Schurman.

Reva Barez Schwartz Fund  
Est. 2003 by Reva Barez Schwartz.

Cornell Scott Scholarship Fund  
Est. 2003 by the Advisory Committee of the Cornell Scott Scholarship Fund.

Seedlings Fund for the Long Wharf Theatre Endowment  
Est. 2008 by the Seedlings Foundation.

Phyllis Z. Seton Fund  
Est. 2015 by Diana Seton Wakerley.

Phyllis Z. Seton Children’s Endowment Fund for Edgerton Park Conservancy  
Est. 2003 by Fenmore R. and Phyllis Z. Seton.

George D. Seymour Fund  
Est. 1945 by bequest of George D. Seymour.

William R. Shaffer Fund  
Est. 1975 by bequest of William R. Shaffer.

Jane Steidley Shaw Fund  
Est. 2009 by Jane A. Shaw.

Cherry Shaw Swords & Virginia Thorne Shaw Fund for the Garden Club of New Haven  
Est. 2014 by Susan Stevens.

Jane Shepard Fund  
Est. 1965 by bequest of Jane P. H. Shepard.

Brooks Shepard Jr. Fund  
Est. 1990 by Brooks Shepard Jr.

Charles R. S. Shepard & Derry Ann Moritz Fund  
Est. 1994 by Charles R. S. Shepard and Derry Ann Moritz.

Sherry Fund  
Est. 2004 by bequest of William Sherry.

Herman E., Clara G. & Helene M. Shincel Fund  
Est. 2001 by bequest of Helen M. Shincel.

David W. Short Music Scholarship Fund  
Est. 2016 by Kelly Short.

Shubert Performing Arts Center Fund  
Est. 1986 by Shubert Performing Arts Center.

Caroline Silverthau Fund  
Est. 1942 by bequest of Caroline Silverthau.

Martha H. Simpkin Fund  
Est. 1971 by bequest of Martha H. Simpkin.

Louis & Joan M. Sirico Fund  
Est. 2010 by Teresa M. Sirico.

Gustave & Carol Lynn Sirot Scholarship Fund  
Est. 1999 by Carol Lynn Sirot.

Gustave & Carol Sirot Family Fund  
Est. 2011 by Carol Sirot.

Margaret G. Sisk Fund  
Est. 2014 by bequest of Margaret G. Sisk.

Sidney Skolnick Fund  
Est. 2016 by Sidney Skolnick.

**Skye Foundation Fund**  
**Est. 2017 by the Skye Foundation.**

Ella E. Smith Fund  
Est. 1959 by bequest of Ella E. Smith.

Maude Smith Fund  
Est. 1967 by bequest of Maude S. Smith.

May C. Smith Fund  
Est. 1996 by Rosemary Little.

David A. & Claire O. Smith Family Fund  
Est. 2003 by David A. and Claire O. Smith.

Donald E. Smith Memorial Scholarship Fund  
Est. 2013 by bequest of Donald E. Smith.

**Rita & Ray Smith Fund for Strong Families**  
**Est. 2017 by Carole Bass.**

Kerala and Richard Snyder Fund  
Est. 2014 by Kerala and Richard Snyder.

Social Services Fund  
Est. 1970 by the New Haven Foundation Distribution Committee.

The Pedro Soto & Sara Jamison Family Fund  
Est. 2016 by Pedro Soto and Sara Jamison.

Viola J. Spinelli Fund  
Est. 2016 by Viola J. Spinelli.

Blanche Spinner Outdoor Recreation Fund  
Est. 1994 by the Citizens Park Council of Greater New Haven.

**Washington Walker Fund**  
Est. 2017 by Jolyn Washington Walker.

Since Jolyn Walker started working at The Community Foundation in 2006, she has made a point to donate every year. In 2017, she decided to take it a step further by establishing the Washington-Walker Family Fund to support local organizations that she and her husband, Judge, are passionate about.

“I always thought that whenever I had enough money to help, I would start a fund,” Jolyn explained. “Working at The Foundation has shown me the many ways one can participate in community by giving no matter how small or large.”

The fund is named, in part, in honor of Jolyn’s father. “He taught my siblings and me the meaning of being civic and community-minded and that meant giving of three things: time, talent and money. He said ‘money was important no matter how small because it demonstrated one’s commitment to the cause’.”

In Jolyn’s case, her commitment is to New Haven and its surrounding communities.

And, she says she is inspired by the knowledge that anything can be accomplished when we work collectively and care for one another and stand united by faith in ourselves and our community.

Margaret M. Sprick Fund  
Est. 1997 by bequest of Margaret Morton Sprick.

R. Edwin and Alpha M. Steele Fund  
Est. 2001 by R. Edwin and Alpha M. Steele.

Joan A. Steitz Fund  
Est. 2008 by Joan A. and Thomas Steitz.

Stepping Stones Milestone Fund  
Est. 2010 by anonymous donors.



Joseph C. Stevens Fund  
Est. 2014 by bequest of Joseph C. Stevens.

Eva-Marie Pfeiffer Stinson Memorial Fund  
Est. 2000 by Helen C. Pfeiffer.

Douglas & Patti Stitzel  
Memorial Scholarship Fund  
for Hamden High School  
Est. 2002 by Milton and Dorothy Stitzel.

Louis and Susan Stone Family Fund  
Est. 2015 by Susan Stone.

Stonebridge Fund  
Est. 2014 by the Stonebridge Foundation.

Lisl Karen Streett Fund  
Est. 1989 by Grace Cornell Terwilliger and  
Dr. J. Walter Streett.

E. Laura Stuart Scholarship Fund  
Est. 2006 by A. Walter and Sharyn A. Esdaile.

Kathleen A. Sullivan Fund  
Est. 2004 by Stephen C. Robinson  
and other donors.

Sullivan Family Fund  
Est. 2008 by Carla and Sean Sullivan

Henri Sumner Scholarship Fund  
Est. 2015 by the New Haven Public School  
Foundation.

Sunshine Fund  
Est. 2005 by the Sunshine Donor.

**Swanson Gregson Fund**  
**Est. 2017 by F. Peter Swanson, MD**  
**and Robert J. Gregson.**

Philip Scott Taksen Memorial Charity Fund  
Est. 2005 by Michelle Taksen.

William Henry Taylor Fund  
Est. 2009 by Priscilla Taylor.

Naomi Law Terrell Foundation Fund  
Est. 2006 by bequest of Naomi Law Terrell.

Charles L. Terrell/New Haven Savings Bank  
Scholarship Fund  
Est. 2001 by New Haven Savings Bank, now  
KeyBank.

Bertha M. and Emanuel H. Thalheimer Fund  
Est. 1963 by bequest of Emanuel H.  
Thalheimer.

Edna May and Richard M. Thalheimer Fund  
Est. 1970 by bequest of Richard M.  
Thalheimer.

Janice M. Thompson Fund  
Est. 1963 by bequest of Janice M. Thompson.

**Walter Tischbein Scholarship Fund**  
**Est. 2017 by William Lee on behalf of the**  
**Lee Company.**

William and Marion Tittel Fund  
Est. 1990 by bequest of William Tittel.

William and Ethel Tittel Fund  
Est. 1990 by bequest of William Tittel.

Lavonne Tokarczyk — S.A.F.E. Fund  
Est. 2002 by Judy Rettig and  
Christine Santoro.

Minnie Tolles Scholarship Fund  
Est. 1988 by bequest of Minnie Tolles.

Raynham Townshend Fund  
Est. 1993 by Mrs. Raynham Townshend  
and family.

Second Annual State Treasurer’s  
Black & White Charity Ball Fund  
Est. 1999 by proceeds of State Treasurer’s  
Black and White Charity Ball.

Grace Ellen Treat Fund  
Est. 1974 by bequest of Grace Ellen Treat.

Benjamin Paul Trivelli Fund  
Est. 2005 by Sharon Trivelli and  
Nicholas Lavorato.

C. Rachel Trowbridge Fund  
Est. 1983 by bequest of C. Rachel Trowbridge.

May Wells Trowbridge Fund  
Est. 1946 by bequest of May Wells  
Trowbridge.

Hayes Q. Trowbridge Fund  
Est. 1969 by bequest of Hayes Q. Trowbridge.

Olga M. Trowbridge Fund  
Est. 1989 by bequest of Olga M. Trowbridge.

Truesdell Donor Advised Fund  
Est. 2007 by Hobart G. and  
Nancy C. Truesdell.

Edgar Tullock Emphysema Fund  
Est. 1983 by bequest of Edgar Tullock.

SSG Nate Turner Scholarship Fund  
Est. 2011 by Marcia and Charles (Tom) Turner.

Lester Turner NAACP Scholarship Fund  
Est. 2008 by the Greater New Haven NAACP.

J. Birney Tuttle Fund  
Est. 1952 by Josephine B. Tuttle.

Wachovia National Bank Fund  
Est. 1973 by Union Trust Company,  
now Wells Fargo.

United Way of Greater New Haven Fund  
Est. 1997 by United Way of  
Greater New Haven.

Urban Improvement Corps Fund  
Est. 1984 by Urban Improvement  
Corporation.

Urban League of  
Southern Connecticut Fund  
Est. 2010 by Urban League of  
Southern Connecticut.

Valley Foundation Fund  
Est. 1980 by Harry Bassett.

Ralph G. Van Name Fund  
Est. 1962 by bequest of Ralph G. Van Name.

Theodora Van Name Fund  
Est. 1962 by bequest of  
Theodora Van Name.

Willard G. Van Name Fund  
Est. 1960 by bequest of  
Willard G. Van Name.

William Verdi Fund  
Est. 1959 by memorial gifts.

Veterans Housing Assistance Fund  
Est. 2008 by Howard R. Udell and  
Michael Friedman.

Barbara Vincent Family  
Donor Advised Fund  
Est. 2009 by Barbara J. Vincent and the  
Vincent Foundation.

Barry J. Vine District  
Animal Control Fund  
Est. 2002 by Judy Rettig and  
Christine Santoro.

Visiting Nurse Association of  
South Central Connecticut Inc. Fund  
Est. 1993 by Visiting Nurse Association of  
South Central Connecticut.

Lawrence John Vitali  
Scholarship for Music Fund  
Est. 2001 by A. Patricia Vitali.

Fund for Volunteerism  
Est. 1999 by the Volunteer Action Center of  
Greater New Haven Inc.

Wack Family Fund  
Est. 1993 by Dr. Jeffrey Wack.

John Charles & Diana Seton Wakerley Fund  
Est. 2012 by John Charles and  
Diana Seton Wakerley.

Nellie M. Ward Fund  
Est. 1957 by bequest of Nellie M. Ward.

Wareck Family Fund  
Est. 1995 by Barbara C. Wareck.

**Washington Walker Fund**  
**Est. 2017 by Jolyn Washington Walker.**

Watershed Fund  
Est. 2003 by Watershed Fund Inc.

Martha W. R. Wayland Fund  
Est. 1971 bequest of  
Martha W. R. Wayland.

Maureen Weaver and Robert Leighton Fund  
Est. 2014 by Maureen Weaver and  
Robert Leighton.

Margaret B. Weir Fund  
Est. 1977 by bequest of  
Margaret B. Weir.

Weiss Family Memorial Fund  
Est. 1990 by Drs. Christina and  
David Cugell.

G. Harold Welch Fund  
Est. 1987 by Harriet H. Welch.

Bessie B. Wessel Fund  
Est. 1976 by bequest of Bessie B. Wessel.

Irmgard and Morris Wessel Fund  
Est. 1993 by family and friends.

Clarence C. Westerberg Fund  
Est. 2009 by Clarence C. Westerberg.

**Weston-Murphy Family Fund**  
**Est. 2017 by Dorothy and Glenn**  
**Weston-Murphy.**

West Haven Rotary Fund  
Est. 1964 by the Rotary Club of West Haven.

Leonor and Isadore Wexler Fund  
Est. 1986 by gifts in memory of  
Isadore L. Wexler.

John D. Wheeler Fund  
Est. 1982 by bequest of John D. Wheeler.

Elizabeth White Fund for Lyme  
Est. 2014 by bequest of Elizabeth White.

Ruth Whittemore Fund  
Est. 2006 by bequest of  
Dr. Ruth Whittemore.

Alexander Whitton Fund  
Est. 1969 by bequest of  
Alexander W. Whitton.

Vivien White Fund  
Est. 2004 by Vivien White.

Wilbur Fund  
Est. 1998 by an anonymous donor.

Wilder Family Fund  
Est. 1997 by Isabel Wilder.

Louise Farnam Wilson Fund  
Est. 1955 by bequest of  
Louise Farnam Wilson.

Frank Winder Fund  
Est. 2016 by Joy Winder Ford.

Donald & Charlotte Wing Fund  
Est. 1974 by bequest of Donald G. Wing.

Deanne H. and Herbert S. Winokur Jr. Fund  
Est. 2010 by Deanne H. and  
Herbert S. Winokur.

Woman’s Choral Society Fund  
Est. 1959 by Woman’s Choral Society  
of New Haven.

Woman’s Seamen’s Friend Fund  
Est. 1961 by Woman’s Seamen’s Friend  
Society of Connecticut.

Women’s Health Services Fund  
Est. 1990 by many donors.

Women’s Vision Fund  
Est. 2009 by an anonymous donor.

Women’s Health Research at Yale Fund  
Est. 2001 by The Community Foundation for  
Greater New Haven and other donors.

WOW Fund  
Est. 2016 by the Women Organizing Women  
Political Action Committee Inc. (WOWPAC).

Iris & David Wyllie Book Scholarship Fund  
Est. 2008 by David Wyllie.

Isadora Wyman Fund  
Est. 2009 by Carol Ross.

Yale University Women’s Organization  
Scholarship Trust Fund  
Est. 1998 by Yale University  
Women’s Organization.

Yale/Seton Book Awards Endowed Fund  
Est. 2001 by Phyllis Z. and  
Fenmore R. Seton.

Tina Yao Fund  
Est. 2015 by Nancy Yao Maasbach.

Robert M. and Ada W. Yerkes Fund  
Est. 2001 by Roberta Yerkes Blanshard.

Youth of Color in the Arts —  
Mary E. Boyle Fund  
Est. by proceeds of Take 6 concert and by  
friends of Mary Boyle.

Yudkin Family Fund  
Est. 1999 by Richard A. Yudkin.

Yudkin Family Scholarship Fund  
Est. 2011 by bequest of  
Richard A. Yudkin.

Seymour L. Yudkin Fund  
Est. 2012 by Seymour L. Yudkin.

Seymour L. Yudkin  
Scholarship Fund  
Est. 2012 by Seymour L. Yudkin.

Janice and Richard Yusza Fund  
Est. 2009 by Janice and Richard Yusza.

Zdru Family Fund  
Est. 2015 by George Zdru.

**Norman Zolot Fund**  
**Est. 2017 by William F. Clark, on behalf of**  
**the New Haven Board of Education.**

Ruth and Sherman Zudekoff  
Scholarship Fund  
Est. 2000 by Ruth and Sherman Zudekoff.

Albert Zunder Fund  
Est. 1951 by bequest of Fanny Fern Falk.

**Weston-Murphy Family Fund**

Est. 2017 by Dorothy and  
Glenn Weston-Murphy.

As the Senior Vice President for  
Development and Donor Services  
for The Foundation, Dorothy “Dotty”  
Weston–Murphy knows a thing or two  
about establishing a fund and leaving  
a legacy.

“It is something I live and breathe  
everyday through my work and  
through community,” Dotty says.  
“It is something that speaks to my  
values and the values that we have  
instilled in our children.” Dotty and her  
husband, Glenn, established a donor  
advised fund in 2017 to support local  
community organizations they love.  
“My passions are women, children, the  
arts and basic needs — those are our  
main focuses.”

The Weston-Murphys have always been  
charitably inclined. Dotty is a Founding  
Member and Wavemaker for The  
Community Fund for Women & Girls,  
and she and Glenn support numerous  
nonprofits across Greater New Haven.  
Their children, Aly and Michael, have  
always volunteered and given back  
to the community as well. They are  
successor-advisors to the fund.

When asked why she and Glenn decided  
to create a fund now, she said “It is  
something we thought about for a long  
time. With what is happening in our  
country, we just wanted to do our part.  
There are so many people working in  
the trenches, directly serving in these  
difficult times when state and federal  
funding is in flux and the impact of  
recent tax law changes is uncertain.  
This is our way of responding.”







Organization Funds are established by nonprofits that wish to have their charitable assets managed under The Community Foundation’s long-term investment model. Since 2014, The Foundation’s Corporation has been a registered investment adviser.

**Al Hopkins Scholarship Organization Fund**

- Agency on Aging Fund
- Christine Alexander Fund for New Haven Reads
- Amity & Woodbridge Historical Society Fund
- Artist Next Door Fund
- Arts Council Board-Designated Reserve Fund
- Artspace Organization Fund
- Birgitta Johnson Campership Fund for Fellowship Place
- Bittker Fund for the New Haven Free Public Library
- Branford Community Foundation Fund
- Bridge Family Center Inc. Fund
- Bridgeport Rotary Club Foundation
- Burry Fredrik Foundation Fund
- Center for Family Justice Inc. Fund
- Central Connecticut Coast YMCA Fund
- Cheshire Historical Society Fund
- Cheshire Land Trust Inc. — Elizabeth P. Ives Endowment Fund
- Children In Placement Endowment Fund
- Christian Community Action Inc. Endowment Fund
- Civic Orchestra of New Haven Operating Fund

- Cold Spring School Fund
- Community Foundation of Northwest CT Fund
- Connecticut Association of Latinos in Higher Education Endowment Fund
- Connecticut Coalition on Aging Fund
- Connecticut Mental Health Center Foundation Endowment Fund
- Phil & Debby Dwyer Central Connecticut Coast YMCA Fund
- Bob Eddy Scholarship Fund
- Edgerton Park Conservancy Fund
- Robert Evans Fund for Long Wharf Theatre
- Farmington Canal Rail to Trail Association Fund
- Fund for Fellowship Place Inc.
- Magee Fenn Scholarship Fund
- Friends of Cheshire Public Library Fund

**Garden Club of New Haven Investment Account Administrative Fund**

**Garden Club of New Haven Investment Account Legacy Fund**

- Gateway Community College Foundation Fund
- Gesell Institute of Child Development Fund
- Ulysses S. Grant Foundation Fund II
- Greater Dwight Development Corp. Fund Greater New Haven Community Loan Fund

- Greisinger Fund for the New Haven Free Public Library
- Bette G. Gruskay Education Fund for the New Haven Symphony Orchestra
- Guilford Foundation Fund
- Oscar & Irma Hamburger Memorial Endowment Fund
- Higher Heights Youth Empowerment Programs Fund
- Housing Operations Management Enterprises Fund
- Immanuel Missionary Baptist Church Fund
- Isaiah Fund for the Community Soup Kitchen
- Junior League of Greater New Haven Fund
- Dr. Chuwan Kim & Family Fund for East Rock
- Hesung Chun & Kwang Lim Koh Family Fund
- LEAP Endowment Fund
- Margaret Leavy Fund for Legal Services
- Long Wharf Doris Duke Endowment Fund
- Long Wharf Theatre Fund for Artistic Excellence
- Lord/Kubler Fund for New Work — Fund B
- Lulac Head Start Fund

**Marrakech Organization Fund**

- Milford Fine Arts Council Trust Fund
- Music Haven Inc. Fund
- Neighborhood Music School Board-Designated Fund

**Neighborhood Music School Jon T. Hirschhoff Scholarship**

- Dr. Regina M. Lily Warner Endowment Fund
- Neighborhood Music School Endowment Fund
- Neighborhood Music School Refugee Endowment Organization Fund**
- New Haven Chorale Fund
- New Haven Free Public Library Fund
- New Haven Green Fund
- Fund for the New Haven Green Endowment
- New Haven Museum and Historical Society Fund
- New Haven Museum Acquisition Fund
- New Haven Public School Foundation Inc. Fund

**New Haven Real Estate Educational Foundation, Inc. Fund**

- New Reach Fund
- NewAlliance Foundation Fund
- NHSO Board-Designated Stability Fund
- NHSO Foundation Inc. Fund
- Orange Congregational Church Fund
- Orchard House Fund
- Mary L. Pepe Fund for Long Wharf Theatre
- Pierce Fund for the New Haven Free Public Library
- J. B. Pierce Laboratory Fund
- John B. Pierce Foundation Fund

- Russell Loan Fund for the New Haven Free Library
- Shepherds Inc. Fund
- Shubert Theater New Haven Fund
- Silvermine Arts Center Fund
- Sleeping Giant Park Association Fund
- The Prosperity Foundation Inc. Fund
- Truman Olin Fund
- Universal Health Care Foundation of CT Fund
- Village Improvement Association Fund
- Watershed Fund
- West Haven Community House Fund
- WNEIP Ritvo Scholarship Fund
- Western New England Institute for Psychoanalysis Fund
- Annual Y.U.W.O. Scholarship Fund
- Yale University Women’s Organization Operating Fund

**Young Men’s Institute Library d/b/a The Institute Library Organization Fund**



In 2017, The Community Foundation received an unprecedented \$54 Million in gifts and transfers. These donations were made in recognition of the challenges we face and the opportunities we have as a community.



<i>Anonymous</i>	<i>Walter &amp; Diane Fried Ariker</i>	Barrett Outdoor Communications Inc.	Barbara, Patti, Robert & Betsy Bishop
ACES Education Foundation	Stephan Ariyan, MD, MBA		
Deborah Michelle Addington	Thomas L. & Maureen Armstrong	Aboud S. Bashy	Kevin Blake
<i>Susan S. Addiss</i>	Douglas Arnstein	Dominic Basile-Vaughan	Meg Bloom & Linda Drazen
Jean Adnopoz	Katharine B. Arnstein	Marvina L. Baskin	Robert G. & Lillian C. Blount
Jean & Bob Adnopoz	Artspace Inc.	<i>Carole Bass</i>	Kenneth & Dolores Bobowick
Adoni Spiritual Formation Center	Judy August	Oishani Basu	<i>R. Reid Bogie</i>
<i>Elliot &amp; Carol Agin</i>	Alan D. Aviles & Anne C. Feigus	Elaine B. Battles	Kim Bohen & Lily James
Nancy Veale Ahern	Axel Johnson Inc.	<i>Wendy Battles</i>	Harold D. Bornstein Jr., MD
Myles & Nancy Alderman	Patricia Hayes Axtmayer	Mark Bauer & Joseph Gordon	Joseph Boskovski
Nancy Alexander & Phillip G. Bernstein	Karen Baar	Baybrook Remodelers Inc.	Mary Bradley
Dr. Lourdes Alvarez	Carol Bailey & Laurie Desmet	Heidi & Samantha Bayuk	Robert & Kathleen Bradley
AmazonSmile Foundation	Darlene Bailey	Cynthia Beauchamp	Austin Bramwell
American Legion, John Collins Post 24	Joanne Bailey	Benevity Community Impact Fund	Helena Brett-Smith
Amity & Woodbridge Historical Society Inc.	<i>Dr. Leon Bailey</i>	Benevolent and Protective Order of Elks (BPOE)	Linda Mason Briggs
Carol Anastasio	Matthew Bailey	<i>Dr. Eric &amp; Ethel Berger</i>	Richard D. Broderick
Phyllis L. Anderson	Robert & Darlene Bailey	Laura Berkowitz Gilbert	John & Judith Brooks
Robert J. Anderson	Mr. & Mrs. Joe Baker	<i>Rita D. Berkson</i>	Sharon Brooks
Robert & Julia Anello	<i>Robin Baker</i>	Bill & Linda Berliner	Robert J. and Cynthia S. Brouillette
Barbara & Chip Angle	Bank of America Matching Gifts Program	Bessemer Trust	Nancy W. Brown
Anne Apuzzo	Albert H. Barclay Jr.	Robert & Barbara Bettigole	Stephen Brown
Natalie Apuzzo	Thomas Barclay	Damian Bianchi	Lisa Brownson
Christopher Arendt	Allison Barkley	Mark & Carol Johnson Bichsel	<i>Whitney Brunet</i>
	Mary Barneby	Nan Birdwhistell	Robert Buckholz Jr.
	Beverly Barnes	Carol D. Birks	James Bundy
	<i>Douglas Barnes</i>	Carla A. Birmingham	<i>Carmen Burgos</i>
			Burry Fredrik Foundation Inc.

<i>Linda Burt</i>	Carol L. Cheney
Susan Busch	Richard & Beverly Chevalier
Dolores P. Butler	Navin & Vimla Chheda
James R. Butler & Barbara S. Butler & Janice M. Butler	Maureen Chinchak
<i>Peter Butler</i>	CHM Scholarship Fund Inc.
<i>Claudia Buzzi</i>	Civic Orchestra of New Haven
Jane Clarke Byers	Joanne Cleary
Family and friends of Valerie Byszczynski	Barbara Clifford
Luis Cabán	<i>Angela Clinton</i>
Alan Cadan	Karen Clute
<i>Heather Calabrese</i>	Mary Ellen Cody
Judge Guido & Anne Calabresi	Cindy Cohen
CALAHE	Cold Spring School
<i>Linda Calarco</i>	<i>Brad Collins &amp; Nancy Clayton</i>
Yolanda Caldera-Durant	<i>Dr. Judith Colton</i>
<i>Tricia Caldwell</i>	James P. Comer MD
Kym Campbell	Northwest Connecticut Community Foundation Inc.
Boni Candelario	Community Soup Kitchen
Amy Caplan	Connecticut Association for the Performing Arts (CAPA)
Lincoln Caplan II & Susan L. Carney	Connecticut Society of Professional Journalists
<i>Sharon Cappetta</i>	Jeannette W. Connelly
<i>Alicia Caraballo</i>	Sally E. Connolly
Marijane L. Carey	Cynthia D. Conrad
Carlson Family Foundation Inc.	Ellen Bogen Cook, Lindsay Cook
Jean H. Caron	Suzanne M. Cooney
Nancy Carrington	Wallace & Barbara Cooper
Lisette Cartagena Perez	Michael Cosenza
Haydee Cartagena	Sydney Covey
<i>Carolyn Cary</i>	Melissa Craig
Emma & John Cavagnuolo	Creative Arts Workshop Inc.
Marcia A. Cavanaugh	Heather Crislip
Andrea & Vinnie Cea	Criterion Capital Management
Katherine Ceccarelli	Estate of Virginia Galpin Crossley
Marleen Cenotti	Marcial Cuevas
Chris & Dave Chadderdon	David W. and Christina Enroth Cugell Unitrust
Jamil & Michele Bailey Chaudhry	<i>Alison Cunningham</i>
Leonard H. & Natalie S. Cheerman	



To Feel Safe and Supported

Every day after school, each young child and teenager who walks through the doors of the New Haven Boys & Girls Club is welcomed by name and given a high five. An afternoon packed with activity awaits them, from homework help, to art and technology projects, to basketball and other athletics.

The New Haven Boys & Girls Club, founded as a boys’ club in 1871, has been a second home for generations of young people. Many of the current members have parents and grandparents who came to the clubhouse when they were children.

Now serving more than 1,100 children and teenagers annually at its Columbus Avenue clubhouse and three satellite locations, the Boys and Girls Club of New Haven offers a holistic program that serves not only the children, but also their families and schools.

Those positive outcomes include 95 percent of its youth members advancing to the next grade level. Based on a child’s need, he or she is paired with a college-aged or adult mentor who can provide academic or homework help. The mentors also provide a listening ear and emotional guidance.

Partnerships with area artists, the Yale Glee Club, AAU basketball, and other organizations allow the club to offer a wide menu of activities for young people to discover their interests.

Because the organization serves many kids from low-income households, memberships are free or offered at reduced cost for many families.

The Boys & Girls Club has received over \$1.3 Million in funding from The Foundation over many years, made possible in part by funds like the Edna May & Richard M. Thalheimer Fund, established by bequest in 1970. Mr. Thalheimer (pictured below) served on The Foundation’s Distribution Committee from 1947 to 1958, and also as a director of his fund’s two beneficiaries: the Boys & Girls Club and Yale New Haven Hospital.





The Curran Foundation	Thomas & Elizabeth Elliman
Rochelle S. & Mervyn K. Danker	Sherrill Ellis
Malwin & Tara Davila	Elm City College Preparatory Middle School
Gustave & Susan Davis	The Elm City Women’s Trade and Commerce Committee
Tarah R. Davis	Anne H. & William Emmet II
Hazel Dayton Gunn	Encon Heating and A/C
Judith R. Dayton	<i>Alida Engel</i>
Nunzio & Daisy De Filippis	Kaitlin Erickson
Tia Debrick	Joyce A. Esposito
Stanley B. Greenberg & Rosa DeLauro	<i>Linda &amp; Mark Estacion</i>
Dennis & Deborah DeLillo	Frank & Ellen Estes
Ernest & Janet DelMonico	Paul Estok III & Deborah L. Estok
Elizabeth Demir	Kathleen Etkin
Derby Democratic Town Committee	Dr. Mary Anne Evangelist
Derby Historical Society	Charles & Marguerite Evanko
Mayur Desai	<i>Sarah Fabish</i>
Elisa Despres	Melanie Falkenberg
Brock Dethier	Marc Farris
David Dethier	Elizabeth O. Fearon
Megan Dethier	Chaka Felder-McEntire & Steven McEntire
Maria T. deUngria	Elaine Feldman
Charles W. DeWitt	John Fellows
Lynn Dgetluck	Fellowship Place
<i>Ann Pecora Diamond</i>	Marilyn & Michael Fenollosa
B.J. & Lenny Diamond	Barbara Fernandez
Jeffrey Dickey	Lisa O. Fernandez
Emma Dickson	Carolyn Ferry
<i>Lisa Diggs</i>	Lynn Fiellin
Richard S. and Susan A. DiMauro	First Church of Christ, Woodbridge
<i>Joy W. Donaldson</i>	<i>Stephanie FitzGerald</i>
Janet D’Orso Gaetjens	Terry Flagg
Christopher Douglas	Cheryl L. Franks
Craig & Marilyn Douglas	Laura Freebairn-Smith MBA, PhD
Emily Douma	Lisa M. Freeman
Vickie Drigotas	Robert & Susan Frew
Rob Dubrow	Friends of Rosa DeLauro
Dunbar United Church of Christ	Friends of the Civil War Monument Restoration
Christopher & Elizabeth Duryea	Connie Frontis & Neil Brockwehl
Robyn L. Eason	FrontStream/TRUiST
Zachary Effman	Alison Frost
Liz & Paul Egan	Janet H. Frost
<i>Anne Eisner</i>	Ann Furgalack
<i>Helmer &amp; Joanne Ekstrom</i>	Mark Gahm & Ursula Brewster
<i>Elizabeth Shelton School</i>	Garden Club of New Haven
<i>Deborah Elkin</i>	Bill & Rosalyn Gargano
Elizabeth Elliman	



To Coexist

When migratory songbirds reach New Haven after flying across Long Island Sound, they immediately hunt for safe perches on which to rest and recover. Audubon Connecticut’s Urban Oases initiative ensures that even in the heart of this urban area, a corridor of green habitats is waiting. Beyond the benefits to birds, wildlife and the larger ecosystem, the oases are also outdoor classrooms for students. The Urban Oases program has created a total of 25 bird habitats in New Haven, 12 at schools and 13 in parks. The sites are part of a larger network of habitats that various bird species will use for stopovers as they make their way north in the spring and south in the fall. Each planting project is reviewed by Audubon Connecticut, Urban Resources Initiative (URI), and US Fish and Wildlife Service to ensure that the selected shrubs and trees are appropriate for both birds and people. Planting and maintenance at park sites is supported by URI and its volunteers, Yale School of Forestry interns and Common Ground’s Green Jobs Corps members. Many neighborhoods targeted by the Urban Oases program have poor air and water quality and a lack of biodiversity.

Audubon Connecticut’s New Haven work has resulted in its program being designated by US Fish and Wildlife Service as one of the first Urban Wildlife Refuge Partnerships in the country.

Audubon Connecticut has received over \$170,000 from The Foundation over the past 10 years, including distributions from the Naomi Law Terrell Fund, which states a preference for programs for the protection of birds and bird habitats in Connecticut.



Gateway Community College Foundation Inc.	Samuel R. Hanford
James & Nancy Geissler	Cornelius Hardenbergh
Dr. Myron & Phyllis Genel	Gail and Jan Hardenbergh
GE Foundation	Kenneth Harris
Eugénie & Bradford S. Gentry	Thomas & Sharon Haskell
Paige M. Gentry	John & Martha Hastings
Elisabeth Gersten	Robert Hawke
Chris & Toddie Getman	<i>Kim Healey</i>
Estate of Dolores Giannini	Andrew & Candice Healy
<i>Carol Giardi</i>	Zachary & Catherine Heaps
Leah Gifford	Charles W. Hebard
Jack Gillette	Lucia Heldt
Kathleen Gillioran	Estate of Alcibiades G. Heris
William W. & Kel Ginsberg	William & Irene Hobbes
Marie J. Giordano	June Holmes
<i>Sally Glick</i>	Lillian Holmes
Nina Glickson	Ricky Horton
Anne Godsey	Cristina Howery
<i>Lindy Lee Gold</i>	Robin Huckaby
The Joe and Cindy Goldberg Family Foundation	Joel W. Hurliman
David & Suzanne Goldberg	<i>Joan P. Huwiler</i>
Joseph Goldberg	Paul Huwiler
Harrison Golden	David Hymer
Ana Gomez	ICAST — International Center for Appropriate and Sustainable Technology
Janet Gonzalez	Maribel & Lisa Ingles
Luz Z. Gonzalez	The Institute Library
<i>Rebecca Goodheart</i>	Integrated Wellness Group
<i>John D. Gordon, CPA</i>	Arlene A. Jachyra
<i>Joseph Gordon</i>	Annie M. Jackson
David & Virginia Gould	Elizabeth Jackson
<i>Karin M. Gould</i>	Elisa James
Thomas Gould	Liza Janssen Petra
William & Jean Graustein	Miriam Jennings
Carol Grave	Mollie Johnson
The Greater Washington Community Foundation	Nancy Roldan Johnson
David S. Green	Lynne Joiner
<i>Ann T. Greene</i>	Helen W. Jones Trust
Sara Greene	<i>Ralph C. Jones</i>
Martin Gregor	Joy Winder Ford Charitable Remainder Unitrust
Dan & Mary Margaret Groberg	Simone Joyaux
Joseph & Patricia Guarino	Catherine Joyce
Geoffrey Guenther	Shirley Joyner
Louise Harvey Guion	JUSTGIVE
Isaac & Ana Guzman	Gerald Kahn
Elizabeth Haas	Stephen Kaminsky & Lisa Wilson
Dimitrios Halikias	Maya Kapadia
	Annie & Ben Kaplan

<i>Ben Kaplan</i>	Arthur & Betty Levy
<i>Moreson Kaplan &amp; Nina Adams</i>	Raymond William Leyden
Lynne Karsten	Yang Li
<i>Lisa M. Kaston &amp; Thomas Behrendt</i>	Don Li
<i>Dr. Paula B. Kavathas</i>	Robert & Helen Light
Frank Keil & Kristi Lockhart	Victor Sean Lilly & Jodi Hill-Lilly
Jean R. Kelley	<i>Mimi Lines</i>
Melissa Kelly Norton	Kimberly Link
Joan Kenna	Erika Linnander
Frank Kenna III & Kimberly Kenna	Chaim Litwin D.V.M.
<i>M. Elizabeth Kennard</i>	Patrick Liu
Philip Kenney	Brian & Sandra Livingston
Kidderbrook Foundation	Amanda Lloyd
Ted & Margie King	Lori Lodge
Charles & Gretchen Kingsley	Joseph F. Loewenstein & C. Lynne Tatlock
Linda Klein	Peter Loge
<i>Matthew Klein</i>	Long Hill School
<i>Traci Knapp</i>	Long Wharf Theatre
Knights of Coumbus, Council 14611 St. Mary	<i>Charles Long</i>
Morgan Knudsen	Robin M. Long
Helen Z. Kobernusz	<i>Ingi-Mai Loorand</i>
Nancy N. Kops	<i>Dr. Francisco Lopez</i>
Lauren, Mark, Jacob & Molly Korman	Laurel A. Lopossa
Sally J. Kornblith	Henry S. Lowendorf
Karl J. & Kathleen Krapek	Mary F. Lowery
Dr. Diane Krause	Georgina Lucas
Dr. Karole J. Kreutter and Dr. David K. Kreutter	Sarah Lucas
Joan Krochmal	Margaret MacMullen
Robert & Marguerite Kyle	<i>Kaye W. Maggart</i>
<i>Barbara J. Lamb</i>	Jeffrey Magid
Linda Lambeck	Jocelyn Malkin, MD
Sheryl Lanahan	Ben Mallet
Janice & Kinny Landrum	Karen L. Mantai
LATICRETE International Inc. & The Rothberg Family	Clare & Patrick Robert
Nancy Lattimer	Marrakech Inc.
The Lee Company	The Marshall B. Coyne Fund
Leighton Lee III	Dee Marshall
Mary Alice Lee	Digna Marte
Philip J. Lee	Susan S. Martin
Stephen Lee	Andrea Martinez
William & Kate Lee	Jennifer Martinez
Rob Leighton	Marian F. Martone
The Leo Rosner Foundation Inc.	Lisa Masotti
Garry & Nancy Leonard	Dr. Moshe & Hedva Matalon
John M. Leventhal	Barbara Matthews
	Dr. Carolyn Mazure
	<i>Amy &amp; John McCauley</i>
	George H. McCullough



<i>Michael &amp; Georgette McFarland</i>	The New Haven Investment Fund LLC
Cheryl L. McGirl	New Haven Rotary Charitable Scholarship Trust
Elaine M. McLeod	New Reach
Linda McMahon	New York Community Trust
Deb McNulty	NewAlliance Foundation
Jenny Medina-Morris	Dick & Marissa Ferguson
Samatha Meklir	<i>David I. Newton</i>
Caprice Taylor Mendez	Charla Nich
John Ment & Beth Shulman	Moira L. Nichols
Ellen Messali	Miriam Niederman
Roslyn & Jerome Meyer	Gladys I. Nieves
<i>Roslyn Milstein Meyer</i>	Hilda Nieves
<i>Janet &amp; Paul Michaelson</i>	Dr. Michael A. Norko
Marc & Tanya Michaelson	Dr. Marcella Nuñez-Smith, MD, MHS
DeAdriane Michelle	Jeffrey S. & Marilyn S. Nyman
Patsy Michelle	Rabbi Stacy K. Offner & Nancy S. Abramson
Dave & Elisa Milano	Gbenga Ogedegbe
<i>Susan Millen</i>	<i>Sara Ohly</i>
William H. Miller	David O’Leary
Lesley Mills	Judith Oliveras
Kelley A. Mitchell	Orange Congregational Church
<i>Maria Mojica</i>	Orchard House (Medical Adult Day Center)
Emma Paulette Moore Rogers	Cynthia Ortiz
Julia Moore	David O’Sullivan
Gladys Moreno-Fuentes	<i>Gilda Outremont</i>
Alix & Mark Morin	Caderyn Owen-Jones
<i>Ernest &amp; Barb Moritz</i>	Frances Padilla
Edward & Carolann Morrissey	John & Frances Padilla
Joel & Isolde Motley	<i>Luis A. Pagán</i>
Thelma L. Mouning	<i>Abigail Paine</i>
Albert Mozeyko	Emily Palten
Elora Mukherjee	Janice M. Panella-Banning
Jaime Muleiro	<i>Melinda Papowitz</i>
Fitzhugh & Irene Mullan	Cynthia Parker
Norman E. & Marilyn W. Munk	Paugassett Hook and Ladder Co #4
Maureen Murphy	Karen Peart
Murtha Cullina LLP	Sonia Pedraza
Susan J. Bryson & Laurence P. Nadel	People’s United Bank
Luis Nario & Norka Malberg	Carole Ann Pepe
Nicholas Neeley	<i>Mary L. Pepe</i>
Neighborhood Music School Inc.	Paul & Arlene Pepin
Network For Good	Eugene & Geraldine Pergament
New Haven Alumnae Chapter of Delta Sigma Theta	Beth L. Perillo
New Haven Chorale	

Diane Perillo
Eileen Perillo
Perrin Family Foundation
<i>Richard &amp; Marion Petrelli</i>
<i>Michele Piccolo</i>
Margie & Edward Pikaart Jr
Charles Pillsbury
Samantha Pinckney
Rich & Krista Pinola
Mary Pisculli
Lindalea Ludwick
Pitney Bowes Foundation — CT
Planned Giving Group of Connecticut
Carol A. Pollard
Alice E. Poole
<i>Angela G. Powers</i>
John Powers
William Powers
Pratt & Whitney Aircraft
Tom Pritchett
Ryan Proctor
Promising Scholars Fund Inc.
Gerald & Miriam Putterman
Michael Rady
Mosies & Monica Ram
<i>Natasha Ray</i>
Katharine K. Raybin
Read to Grow Staff
Mary Reiners
Renee B. Fisher Foundation Inc.
Judith Resnik
Catherine & Mick Ribeiro
Henry Rines
Benjamin & Lilly Rios
Rita Allen Foundation
Anna Rivera-Alfaro
<i>Tara Rizzo</i>
Susanne Roberts
Kelley N. Robinson
<i>Leslie Robinson</i>
Shanette Robinson
Norma Rodriguez
Rosa Rodriguez
Brian & Rhonna Rogol
Cynthia Rojas
Mr. & Mrs. Alberto Roman

Rose B. Gingold Charitable Unitrust
Aron Rose
Eric Rosentock
Robert Rosner
<i>Carol F. Ross</i>
Patricia Rossi
Janis Rossman
Lorraine B. Rossner
<i>Sheilah Rostow</i>
<i>Elizabeth Roth</i>
Nancy A. Rozendal & Gordon Lisker
Sergio & Randi Rubin Rodriguez
<i>Randi Rubin Rodriguez</i>
Tim Georg Johann Rudner
Randy M. Ruotolo
Marion M. Russell
Philip J. & Jane H. Ryan
Joanne Saccio
Suzanne C. & David L. Sack
Minding the Baby Staff
Edla F. Saffo
Elizabeth Samuels
Jo Samuels
Tara Sanabria-Davila
Mavi Sanchez-Skakle
Dr. Maria Sandoval-Schaefer
Daniel SantaMaria
The John and Carrie Santangelo Foundation Inc.
Mario Valentin Santiago
<i>Raquel Santiago-Martinez</i>
Frank & Betty Lou Santino Sr.
David R. Schaefer & Janet C. Hall
Gavin Schiffres
Jeremy Schiffres
Alexander Schillaci Jr.
Rosemary A. Schmitt
Steven W. Schoppmann
Patricia E. Schroeder
Judith C. Schurman
Joanne Sciulli
<i>Patricia A. Scussel</i>
<i>Barbara Segaloff</i>
Cathy & John Seibyl
Peter M. Seigle & Patty A. Giardi
Sandra Vigliotti Senich

Lauren S. Seplowitz
Tiffany Seyler
Amy Shah
Hasmukh Shah
Jheel Shah
<i>Jane A. Shaw</i>
Jana & Tom Shea
Patricia Shea & Peter Lovell
Mary Lou Shefsky
Shelton Historical Society
Dr. Stephanie Spangler & Robert Shulman
Douglas W. Rae & Ellen Shuman
Pamela & Bruce Simonds
Melissa M. Simonetti
<i>Teresa M. Sirico</i>
Lisa M. Slade
<i>Andrew Small</i>
Anne C. Smith
R. Russell Smith & Rosamond Smith
<i>Ratasha Smith</i>
<i>Susan Smith</i>
<i>Kerala &amp; Richard Snyder</i>
Paulo Soares
Dr. Herbert & Brandy Solomon
Sons of Union Veterans of the Civil War
<i>Katharine O. Spadacenta</i>
<i>Judy Sparer</i>
Lauri Spargo
<i>Tressa A. Spears Jackson</i>
David G. & Marcia N. Speck
Sallie Sperling
John Spino
Sandy Springer
<i>David Stagg</i>
Roman Stambaugh
James & Martine Stamos
Anne Stankye
Myra Stanley
Deborah Stanley-McAulay
Sarah Starr-Murphy
Elizabeth Steckart
Stephen L. Altshul Foundation
Dr. Alden L. & Reba M. Stock
Maria Josefina Stransky de Diaz
<i>Dr. Lynn Street</i>

Cynthia Streeter
<i>Carla Supersano Sullivan</i>
Carla & Sean Sullivan
Sunoco Inc. (R&M)
<i>Richard Sussman &amp; Nina Horowitz</i>
Elizabeth Swank
Peter Swanson MD & Robert J. Gregson
Cathy & Rod Swift
Quratulain Syed
Leon & Barbara Sylvester
Debbie Tashlein
The Steffen Family
Terri Ann Thompson
Dr. Mary Tinetti
Joel Tolman
<i>Harriet Tolson</i>
Calixto Torres
Travelers Community Connections
<i>Sandra Trevino</i>
Triton Foundation
Sharon Trivelli
Hobart G. Truesdell
Trust for Learning
Michael Trusty
Mike & Diane Trusty
Howard G. Tuttle Jr.
Kathryn R. Tuttle
UBS Employee Giving Program
UIL Holdings Corporation
Diana & Thomas Ullmann
UnitedHealthcare
U.S. Department of Health & Human Services/New Haven Healthy Start
United Way of Greater New Haven
Dr. Stephen Updegrove
Norma I. Valentin
Valley United Way
Card Group Friends
Jane Vanneman
<i>Paul C. &amp; Joann M. Varsanik</i>
Sarah F. Vasey
Veterans’ Memorial of Derby



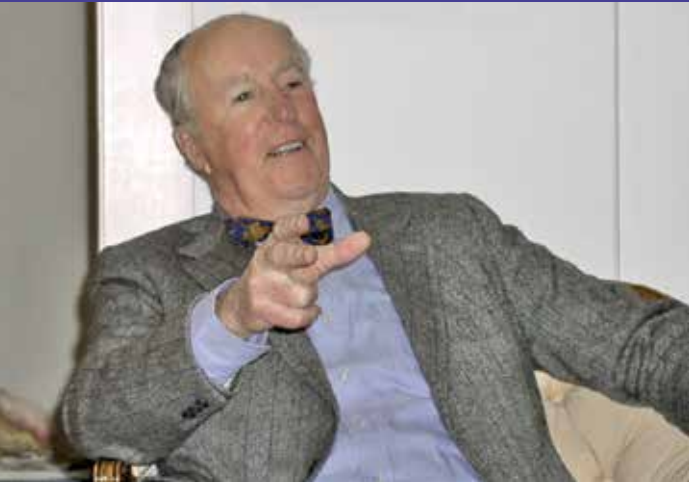
To Train for a Good Job

Culinary students beamed with pride as they served up empanadas, pulled pork sliders, cookies and other tasty treats to an appreciative crowd of state and local officials at the grand opening of ConnCAT’s Orchid Café in 2017. The event was the culmination of more than two years of planning and developing the state-of-the-art culinary institute at ConnCAT, a career education center with a mission of transforming the lives of individuals with barriers to employment. The 55-seat café, located in Science Park, is open for breakfast and lunch. It is one of three lines of business that introduce ConnCAT’s culinary students to a variety of food service jobs. All twenty of the students in the culinary institute’s first cohort have been hired by restaurants around the city; several have plans to open their own food businesses. In addition to culinary classes, ConnCAT provides training in two market-relevant skills: medical billing and coding, and phlebotomy.

ConnCAT was conceived in the early 2000s and launched in 2012 with seed money from The Community Foundation. The center is modeled on Pittsburgh’s Manchester Bidwell Corporation — an internationally recognized arts and education center founded by the MacArthur Fellow, Bill Strickland.

All of ConnCAT’s students have experienced challenges finding or keeping jobs that provide opportunities to rise out of poverty, and one-third of them have a history of incarceration. “Although we are working with people who are living in poverty, this is not a poverty program,” says Executive Director Erik Clemons. “The design of the space speaks to the idea of transformation and speaks to the idea that people here are valued. Everything we do is for the purpose of giving people dignity.”

ConnCAT has received over \$2.5 Million in support from Foundation donor advised, unrestricted and preference funds, including a fund established by bequest of Frank Kenna Jr. (pictured below) in memory of his father.





Gayathri Vijayakumar	Caroline Wilson Palow
Viola Ohlbaum 2013 Trust	James E. & Dianne Wilson
Alexandra Viola	<i>Dr. Robert D. Windom</i>
Visiting Nurse Association of South Central Connecticut	The Winokur Family Foundation Inc.
Peter, Patty, Chris, & Talia Waelsch	Deanne H. & Herbert S. Winokur Jr.
<i>Janna Wagner</i>	<i>Steven Wolfson</i>
Maureen Wagner	Robert J. Worrell & Doris G. Worrell
Rex & Wendy Walden	Anna Wurtz
Breanna Walker	Katherine Yacavone
<i>Jolyn Washington Walker</i>	Yale University Women's Organization
James & Barbara Walters	Ava Yap
Elizabeth Wamser	Rahsaan Yearwood
Elizabeth Wang & Joshua Bloom	Nancy Yedlin
John Edward Ward	Norman & Kathleen Yolish
Barbara Wareck	Judith Young
Eleanor Faller	George Zdru
The Watershed Fund Inc.	Barbara Zeller
Cynthia Watson	Andrew Zuckerman
Denise Duclos & Denise Webb	Rosanne Zudekoff
<i>Carla Weil</i>	
Sandy Weinbe	
Beth Weinberger & Mark Schaefer	
Martha Weisbart	
Susan Werner	
Wesleyan University	
West Haven Community House	
Glenn & Dotty Weston-Murphy	
Deborah Westover	
Susan Westphal	
Cameron Whetstone	
Barrett & Anne White	
Caleb & Elizabeth White	
<i>Virginia T. Wilkinson</i>	
Amy Williams	
Bernard & Lee Williamson	



To Work and Contribute

In late 2010, the doors were about to close on the Greenbrier Greenhouse Program. For more than three decades the innovative social enterprise had provided jobs at the historic Edgerton Park Gardens and Greenhouse to adults with autism and other developmental and physical disabilities. Tending plants and helping customers was therapeutic to participants, having the effect of brightening the personalities of individuals with depression and difficult behaviors. Instead of looking for a new job, Scott Hickman, the 15-year manager of Greenbrier, decided to act. He and a partner formed the nonprofit, GROWERS Inc. and took over. GROWERS reached an agreement with the Connecticut Dept. of Social Services to continue funding the program and took in donations from individual supporters. They also received approval from the Edgerton Park Conservancy, which manages the use of the park. GROWERS serves 26 participants from towns throughout Greater New Haven. GROWERS workers landscape the park and tend their own vegetable plots in the gardens in addition to caring for plants in the greenhouses. The program has reached capacity in Edgerton Park and is seeking to expand in other locations. The work is more than just a job; it's an opportunity for people to have fulfillment and purpose.

Edgerton Park is listed on the National Register of Historic Places, and its Sarah T. Crosby Conservatory was restored in the late 1990s with a matching grant from The Community Foundation.

The Edgerton Park Conservancy has received over \$113,000 since 1999 from Foundation donor advised, designated and unrestricted funds, like the Carol and James Kasper Fund.



Gifts to honor family members or friends are made to many established funds, and are a time-honored and meaningful way to pay tribute to or remember someone special.

In Memory

Mary B. Arnstein  
Mary B. Arnstein on Mother's Day  
Clara T. Arpaia  
Albert H. Barclay & Catharine Hooker Barclay  
Marquise L. Baskin  
Howard W. Beach  
Ricki Lahn Chopyk Biondi  
Dr. Miriam C. Birdwhistell  
Morris Bishop  
Betty R. Bogie  
Jazmine Bryant  
Christopher William Caldwell  
Lillian Candelaria  
Katrina Clark  
Paul & Audrey Conrad  
Janet Saleh Dickson  
Brian D'Orso  
Andrew Eldredge  
Nathaniel K. Fenollosa  
Joseph & Jeanne Froetschel  
Nick Gabucci  
Mildred (Millie) Gibson  
Lawrence Gilbert  
Jackie Greenberg  
Sister Anne Virginie Grimes  
Macie Hadderson  
Patricia P. Juliano  
Mr. & Mrs. Edward Lowery  
Talia Lucineo

Palma Mallery  
Ana Miladys Marty  
Peter McDermott  
Keegan D. Moeller  
Teresita Nunez  
Viola S. Ohlbaum  
James Perillo  
Carmen Lydia Ramos  
Ashleigh Ann Rector  
Paula Morales Santiago  
Barbara Smith and Anne Knight  
Irshad Syed  
Lisa Mayo Tinney & Dorna Stover  
Walter Tischbein  
Barbara Turcotte  
Uncle Dave  
Edith Wiley  
Anna Farrell Zudekoff

In Honor

Susan S. Addiss  
Farrin R. Anello  
Farrin Anello & Robert (Bob) Kopp  
Farrin Anello & Robert (Bob) Kopp's wedding  
Walter & Diane Fried Ariker  
Alfredo Axtmayer II  
Eliza Barclay  
Pat & Bruce Bartlett  
Mark Bauer  
Claire Berkowitz  
Dorrie Blake  
Peter Butler  
Heather Calabrese  
Maria & Jose Caldera  
Nikki & Nicholas Caplan  
Katrina Clark  
Georges Clermont  
Spanish Community of Wallingford  
Larry Conaway  
Red & Betsy Courtmanche's 50th wedding anniversary  
Alison Cunningham  
Dr. Cynthia D. Conrad  
Malwin & Tara Sanabia Davila  
Martha deBarros  
Erica Wagner and Farah Diboun  
Joy W. Donaldson  
The DSDSC Team  
Maeve, Elizabeth and Grace  
Barbara Ellinghaus  
Bishop HESSIE L. HARRIS Family  
Amy, Charlie & George Fenollosa  
The Prosperity Foundation  
Maci Freedman  
Rosalyn & Bill Gargano's 50th Wedding Anniversary  
Eugénie Gentry  
Margaret Gillen & Maria Gillen  
Joseph Gordon  
Sandy Grindley  
Judith Dozier Hackman  
Everett Hutchings  
John Loge  
Maribel Lopez  
Jocelyn Maminta  
Dr. Marcella Nuñez-Smith  
Marian F. Martone  
Julia McNamara  
Marc J. Michaelson  
Thelma Mouning  
The National Black Police Association  
Eileen Perillo  
Liza Janssen Petra  
Amy Pitkin and Judith O'Shea  
Angela G. Powers  
Peter Butler and the kids of Elm City College Prep  
all Puerto Ricans  
Disaster Relief Pledge offered at Progreso Latino Fund's Forum "The Latino Experience: Living in Two Worlds"  
Puerto Rico se levanta  
Jose Felipe Santiago  
Jana Shea  
David Short  
Ratasha Smith  
Valena Smith  
Naomi Horowitz & Bea Sussman  
Janna Wagner  
Ceelee Watson  
Jayden Wellman  
Katherine Winter  
Nancy Yao Maasbach



More than \$28 Million was awarded in 2017 in grants and distributions from Foundation funds.



**DESIGNATED FUNDS**  
Grants from designated funds support specific organizations in perpetuity, as expressed by individual donors or groups.

**DONOR ADVISED FUNDS**  
Grants from donor advised funds are made on the recommendation of the donors, who wish to be involved in their philanthropy on an ongoing basis.

**FIDUCIARY FUNDS**  
Grants from fiduciary funds are made on behalf of an organization or project for which The Community Foundation serves as fiscal steward.

**giveGreater.org\***  
Grants from giveGreater.org\* are given to the organizations as determined by donors.

**ORGANIZATION AND PERMANENT ORGANIZATION ENDOWMENT FUNDS**  
Distribution from these types of revocable and non-revocable funds are disbursed to benefit the organization for which the fund was established.

**PREFERENCE FUNDS**  
Grants from preference funds address a donor’s area of interest in the community. The Community Foundation’s Board determines the grants that will have the most impact and fulfill the donor’s intent.

**SCHOLARSHIP FUNDS**  
Grants from scholarship funds provide assistance to students for secondary and post-secondary education and training, and are made to the educational institution.

**UNRESTRICTED FUNDS**  
Grants from unrestricted funds address a broad range of local opportunities and needs. They are used to support Foundation leadership strategies, responsive grantmaking and The Great Give®

108 Monkeys	●●	\$4,672
350.org	●	\$1,000
A Better Chance	●	\$1,000
A Broken Umbrella Theatre	●●●●	\$9,664
A Place Called Hope	●●	\$2,309
Abilis Community Foundation Inc.	●	\$500
Abilities Without Boundaries	●●	\$347
Ability Beyond	●●●●	\$15,034
Abraham’s Promise	●●	\$52
Academy of Our Lady of Mercy, Luralton Hall	●	\$10,000
ACES Education Foundation	●	\$500
ACES Educational Center for the Arts	●	\$500
Achievement First	●●●●	\$326
Adam Wysota Foundation	●●	\$866
African Communities Together Inc.	●	\$880
Afro-American Cultural Center at Yale	●	\$500
Agency on Aging of South Central Connecticut Inc.	●●●●●●	\$282,090
Aid for Orphans Relief Foundation	●●●●	\$7,026
AIDS Project New Haven	●●	\$785
Albertus Magnus College	●●	\$3,186
Alexis Hill Montessori School	●●	\$25
All Our Kin Inc.	●●●●●	\$93,997
All Saints Catholic Church	●	\$5,000
Alpha Kappa Alpha, Tau Xi Omega Chapter	●	\$2,351
Al’s Angels Inc.	●	\$250
ALS Association, Connecticut Chapter	●●●●●	\$4,678
Alzheimer’s Association	●	\$1,000
Alzheimer’s Association Connecticut Chapter	●	\$10,000
American Anti-Vivisection Society	●●●●	\$9,641
American Cancer Society, New England Division	●●●	\$62,964
American Civil Liberties Union	●	\$11,000
American Civil Liberties Union Foundation of Connecticut (ACLUF-CT)	●	\$2,000
American Diabetes Association Connecticut Affiliate	●	\$3,000
American Foundation for the Blind	●●●●	\$9,816
American Friends of Le Korsa	●	\$500
American Friends of the Canadian Centre for Architecture	●	\$20,046
American Heart Association	●	\$856

American Jewish Joint Distribution Committee	●	\$500
American Jewish World Service	●	\$8,500
American Liver Foundation	●●	\$26
American Lung Association of New England	●	\$4,500
American Museum of Tort Law	●	\$500
American Red Cross— SCC Chapter	●	\$250
American Red Cross, Connecticut Chapter	●●●●	\$48,495
American Red Cross, National Headquarters	●	\$5,000
American School for the Deaf	●	\$9,608
American Symphony Orchestra League	●	\$2,800
American University	●	\$2,500
Americans for Peace Now	●	\$750
AmeriCares	●	\$500
America’s VetDogs — The Veteran’s K-9 Corps.	●●	\$130
The Amistad Center for Art & Culture	●	\$1,000
Amity Regional High School	●	\$2,612
Amity Teen Center Inc.	●●	\$7,560
Amnesty International	●	\$4,084
Animal Haven Inc.	●●●●●	\$117,724
Annie Wright School	●	\$1,000
Another Octave: Connecticut Women’s Chorus	●●	\$1,267
Ansonia High School	●	\$37,178
Ansonia Public Library	●	\$4,170
Ansonia Public Schools	●●	\$3,125
Anti-Defamation League of B’Nai B’rith	●	\$1,500
Anti-Defamation League, Connecticut Regional Office	●●	\$498
Apostle Immigrant Services	●●●●	\$29,856
APT Foundation Inc.	●●●●	\$11,924
Architecture Resource Center Inc.	●●●●	\$12,809
Area Congregations Together Inc.	●●●●	\$11,430
ARI of CT Inc.	●	\$1,000
ArKtype	●	\$5,000
ArtBra New Haven	●●	\$26
Arte Inc.	●●	\$1,052
Arthritis Foundation	●	\$9,608
Arts Council of Greater New Haven	●●●●	\$33,533
Arts for Learning Connecticut Inc. (Young Audiences of Connecticut Inc.)	●●●●	\$15,717
Arts in CT Corporation	●●	\$1,125
Artspace Inc.	●●●●	\$23,050
Ashoka — Innovations for the Public	●	\$10,000
ASPCA (American Society for the Prevention of Cruelty to Animals)	●	\$250
ASSIST — American Secondary Schools for International Students & Teachers Inc.	●	\$500
Associated Irish Societies	●●	\$26
The Astronomical Society of New Haven	●●	\$1,312



**To Live Empowered and Unencumbered**  
Financial literacy is critical to a person’s wellbeing and upward mobility. When financial principles are not understood, people are limited in their ability to manage financial risks effectively and avoid financial pitfalls.  
In 2017, the National Coalition of 100 Black Women, New Haven Metropolitan Chapter, received funding from The Prosperity Foundation (TPF) to support financial literacy workshops for female college students. The grant was one of 11 awarded by TPF, a statewide community foundation established by and for the black community within Connecticut. Beyond its Small Grants Initiative, TPF houses various types of funds, including donor advised funds, giving circles and scholarship funds. Additionally, TPF invests in black communities in Connecticut in other ways, such as sponsorships and through other types of grants.  
The Prosperity Foundation currently has 16 funds and is led by a 6 member Board of Directors that includes community leaders Howard K. Hill, Larry Conaway, Nancy Hill, Yves Joseph, Cathy R. Graves and Carolyn Vermont (pictured below at a co-sponsored event with The Community Foundation).  
TPF is an outgrowth of a fund established in 2010 at The Community Foundation. The Foundation has provided more than \$150,000 in matching grants to TPF and its predecessor Fund in addition to securing a \$300,000 grant from the W. K. Kellogg Foundation in 2014 to support the start-up and early-stage growth of TPF. The Community Foundation also provides investment management of TPF funds and collaborates with TPF on events such as the 2017 donor briefing on racial and ethnic health disparities.





Audubon Connecticut	●●●	\$14,101	CALAHE	●	\$21,000
B.A.M. Inc., Boy's Advancing to Men	●	\$1,000	Calvin Hill Day Care	●●	\$10,914
Backyard Theater Ensemble Inc.	●●	\$151	Camp Hazen YMCA	●	\$2,000
Ball & Socket Arts	●●	\$7,773	Camp Kesem at Yale	●●	\$105
Baltimore Museum of Art	●	\$4,084	Canal Dock Boathouse Inc.	●●●●●	\$18,621
Bank Street College	●	\$93,040	CancerCare, Inc — Connecticut Office	●	\$10,000
Bare Necessities Inc.	●	\$2,000	Capital for Change	●●●	\$5,149
Beacon Self-Directed Learning	●●●	\$16,565	CARE	●	\$1,000
Beardsley Park Zoo	●	\$500	Career Resources Inc.	●●	\$829
Beauty is You	●●	\$284	Caribbean American Heritage Month Festival Committee	●●	\$920
Believe in Me Empowerment Corporation	●●	\$35,000	Carnegie Mellon University	●	\$1,000
Bellevue/NYU Program for Survivors of Torture	●	\$3,800	Casa Otonal Inc.	●●	\$5,151
Bend the Arc — A Jewish Partnership for Justice	●	\$1,500	Catholic Charities Archdiocese of Hartford	●●	\$37,750
Benjamin Jepson School	●	\$756	Catholic Charities Inc. — Archdiocese of Hartford	●	\$341
Berkshire United Way	●	\$5,000	Celotto Child Care Program at Wilbur Cross	●	\$500
Berkshire-Taconic Community Foundation	●	\$5,000	Center for Children's Advocacy	●●●	\$25,326
Best Video Film & Cultural Center	●●●	\$14,002	The Center for Family Justice	●	\$40,000
Bethany Library Association	●●	\$9,219	Center for Spirituality and Healing	●	\$4,000
Beth-El Center Inc.	●●●●	\$27,416	Center Stage Theatre Inc.	●●	\$52,735
Bethesda Nursery School	●●●	\$3,059	Central Connecticut Coast YMCA	●●●●	\$96,717
Beulah Heights First Pentecostal Church	●●	\$623	Central Connecticut Coast YMCA, Hamden/North Haven Branch	●	\$12,803
Beulah Land Development Corporation Inc.	●●	\$32,708	Central Connecticut Coast YMCA, Soundview Family YMCA Branch	●	\$5,000
BHcare	●●●●	\$62,108	Central Connecticut State University	●	\$3,500
Birthright of the Valley	●	\$47	Central CT State University	●●●	\$52,320
Black and Hispanic Caucus	●	\$2,500	Centro San Jose c/o Catholic Charities Inc.	●	\$3,000
Black Rock Food Pantry	●	\$1,000	Cesar Batalla Family Resource Center	●	\$10,000
Booker T. Washington Academy	●●	\$11,175	Chabad Lubavitch of Westport	●	\$2,000
The Boston House	●	\$4,111	Chabad of the Shoreline	●	\$500
Botsford Historical Association Inc.	●	\$45,929	Champlain Valley Office of Economic Opportunity	●	\$1,900
Boy Scouts of America, Connecticut Yankee Council	●●●	\$117,814	Chapel Haven Inc.	●●●●●	\$9,598
Boys & Girls Club of Milford	●●	\$26	Charter Oak Cultural Center	●	\$1,000
Boys & Girls Club of New Haven	●●●●●	\$92,161	Chemical Abuse Services Agency	●	\$150
Boys & Girls Club of the Lower Naugatuck Valley	●●	\$8,381	Cheshire Historical Society	●	\$6,115
Boys & Girls Village Inc	●●	\$3,382	Cheshire Land Trust	●	\$9,000
Branford Community Foundation	●●●●●	\$117,816	Cheshirepedia Inc.	●●	\$52
Branford Compassion Club	●●●	\$7,709	Child Guidance Clinic	●	\$10,000
Branford Early Childhood Collaborative	●●●	\$2,760	Children in Placement of CT Inc. (Connecticut Youth Alliance)	●●●●●	\$52,443
Branford Electric Railway Association	●●●●	\$21,388	Children Inc.	●	\$15,292
Branford Food Pantry Inc.	●●●	\$1,515	The Children's Aid Society	●	\$2,000
Branford High School	●●●	\$43,144	The Children's Center of Hamden	●●●●●	\$76,142
Bread & Roses Community Fund	●	\$2,000	Children's Law Center of Connecticut	●	\$4,000
Bridgeport Rotary Club Foundation	●	\$130,000	The Children's Preschool	●●	\$3,465
Bridges Healthcare Inc.	●●●	\$51,699	Christ Church Parish of New Haven	●	\$27,894
Brown University	●	\$1,000	Christ Episcopal Church	●●	\$52
Bryant University	●	\$3,000			
Burroughs Community Center	●	\$1,000			



### To Learn from World-Class Musicians

After more than a decade of teaching classical chamber music to young children, Music Haven is seeing its first students about to graduate high school and go on to college. “We consistently have thirty to forty kids on the waiting list,” says Executive Director Mandi Jackson. “We have a ninety percent retention rate. Once they come they tend to stay. It gives them not just a passion for music, but also an avenue to new opportunities.”

The young musicians also have a passion for giving back. The Music Lanterns, Music Haven’s youngest chamber ensemble, recently raised money and awareness to benefit orphan girls in India. The musicians, ages 8–11, learned about the girls, who are members of India’s Dalit community and live in Simon’s House orphanage. The Music Lanterns raised money through performances to help pay for some of the girls to attend school. A past project by students raised money for Simon’s House to build a well.

Music Haven is an after-school program that provides boys and girls from struggling neighborhoods in New Haven the opportunity to learn from world-class musicians. The program starts with children as young as six years old and includes both one-on-one and ensemble lessons, as well as trips to concerts. While no experience is necessary, the children must be committed to practicing and attending classes three days a week, for two to three hours a day. This past summer, two students flew to Los Angeles to play with the Los Angeles Philharmonic. High school students are also mentored during their college decision-making process.

The Community Foundation has supported Music Haven since 2007 with nearly \$500,000 of support from preference funds like the Henry & Nancy Horton Bartels Fund for Education and the Arts, and donor advised funds like the Resch Family Fund founded by Paula and Dick Resch (pictured below).



Christ Episcopal Church of Bethany	●	\$6,728
Christ Presbyterian Church	●	\$500
Christian Community Action	●●●●●●	\$58,623
Christian Community Commission	●	\$5,000
Christian Counseling & Family Life Center	●●	\$98
Church of Christ Congregational	●	\$15,170
Church World Service	●	\$770
Circle Camps for Grieving Children	●	\$2,400
Circle of Care for Families of Children with Cancer Inc.	●●●●	\$11,526
City Harvest Inc.	●	\$1,500
City of New Haven Health Department	●	\$173
CitySeed Inc.	●●●	\$18,905
Citywide Youth Coalition Inc.	●●●	\$21,683
Civic Orchestra of New Haven	●●●●●	\$11,962
Cleveland Institute of Music	●	\$6,000
Clifford W. Beers Guidance Clinic	●●●●●	\$85,486
CoCo's Animal Rescue Efforts of Seymour	●	\$7,475
Cold Spring School	●	\$500
Columbus House Inc.	●●●●●	\$148,659
Community Action Agency of New Haven Inc.*	●●●●	\$40,000
Community Action Stops Abuse Inc.	●	\$7,500
Community Bonds Inc.	●●●	\$33,025
Community Dining Room	●●●●	\$12,807
Community Foundation Opportunity Network	●	\$2,500
Community Health Network of CT Foundation Inc.	●●	\$4,001
Community Mediation Inc.	●●●	\$15,167
Community Partners in Action	●	\$5,000
Community Soup Kitchen	●●●	\$34,977
Conaway Fund of The Prosperity Foundation	●	\$16
Concepts for Adaptive Learning	●●	\$8,052
Congregation Beth El-Keser Israel	●●	\$4,743
Congregation B’Nai Jacob	●	\$1,761
Congregation Mishkan Israel	●●	\$5,793
Congregation Or Shalom	●	\$3,210
Congregations Organized for a New Connecticut	●●●●	\$17,152
The Connecticut Academy of Arts and Sciences	●	\$250
Connecticut Appleseed Center for Law & Justice Inc.	●●●	\$3,580
Connecticut Asset Building Collaborative	●	\$5,000
Connecticut Association for Human Services	●●●	\$4,233
Connecticut Association for the Performing Arts (CAPA)	●●●●	\$276,303
Connecticut Audubon Society	●●●	\$10,487
Connecticut Center for Arts & Technology	●●●●●	\$250,342
Connecticut Children's Medical Center Foundation Inc.	●	\$10,608
Connecticut Children's Museum	●●●●	\$15,943
Connecticut Coalition Against Domestic Violence	●	\$10,000
Connecticut Coalition to End Homelessness	●●	\$1,116



Connecticut College	●●	\$18,297
Connecticut Community Gardening Association	●	\$3,500
Connecticut Council for Education Reform	●	\$500
Connecticut Council for Philanthropy	●	\$43,223
Connecticut Early Childhood Alliance	●	\$26,142
Connecticut Epilepsy Advocate Inc.	●●	\$26
Connecticut Fair Housing Center	●	\$5,000
Connecticut Farmland Trust	●●●	\$3,181
Connecticut Food Bank	●●●●	\$64,540
Connecticut Forest & Park Association	●●●	\$2,626
Connecticut Foundation for Dental Outreach	●●	\$30,000
Connecticut Fund for the Environment	●●●●●	\$36,109
Connecticut Health Investigative Team	●●●	\$12,079
Connecticut Hospice Inc.	●●●	\$34,473
Connecticut Humane Society	●●●	\$20,520
Connecticut Immigrant Rights Alliance	●	\$100,000
Connecticut Junior Republic	●	\$2,382
Connecticut Main Street Center	●	\$3,500
Connecticut Mental Health Center Foundation	●●●●	\$29,775
Connecticut News Project	●	\$160,000
Connecticut Psychological Association	●	\$2,500
Connecticut Public Broadcasting	●	\$2,865
Connecticut Regional Institute for the 21st Century	●	\$2,500
Connecticut Science & Engineering Fair	●	\$400
Connecticut State Golf Association	●	\$12,818
Connecticut Students for a Dream	●	\$35,000
Connecticut Trust for Historic Preservation	●●	\$209
Connecticut Veterans Legal Center	●●●	\$20,990
Connecticut Voices for Children	●●●●	\$47,992
Connecticut Women's Education & Legal Fund	●●●	\$26,092
Connecticut Women's Hall of Fame	●●●	\$5,285
The Connection Fund Inc.	●●	\$1,262
Conquer Cancer Foundation of the American Society of Clinical Oncology	●	\$500
The Consultation Center	●	\$20,000
Continuum of Care Inc.	●●●	\$10,982
Cooperative Arts & Humanities High School	●●	\$6,847
Cornell Scott Hill Health Corporation*	●●●●	\$60,000
Cornell University	●	\$6,000
Corporate Accountability International	●	\$3,000
Council on Foundations	●	\$22,850
Courage Kenny Foundation	●	\$15,292
The Cove Center for Grieving Children	●●	\$23,901
Covenant to Care for Children	●	\$14,000
Creative Arts Workshop	●●●●	\$43,555
CT Audubon Society — Milford Point	●●	\$5,250
CT Boys and Girls State Foundation	●●	\$127



### To Access Local News

Until the ascendancy of the internet and digital communications, public interest news reporting — particularly at the local level — was primarily supported by advertisements in newspapers. But as news organizations moved their content online, the bulk of the advertising revenue has not followed, flowing instead to tech companies like Google and Facebook. In 2005, the Online Journalism Project (OJP) in New Haven recognized the need for a new financial model to support local news and launched one of the first nonprofit online news sites in the country — the New Haven Independent. With support from The Community Foundation, the site has grown to produce thousands of local news stories, attracting more than 250,000 unique visitors per month. The New Haven Independent has since bought a radio license and produces a full schedule of daily shows with local guests that it broadcasts on WNHH (103.5 FM) and streams online.

The Online Journalism Project and the New Haven Independent were founded by Paul Bass, a New Haven journalist for more than 30 years. Bass says that he landed on the idea for the business model after reading an article about how journalism should be thought of like a public utility. “I had experience in the for-profit model and thought it wouldn’t work,” he says. “A light went off in my head — try the NPR [National Public Radio] model.” Bass says that what drives the coverage — and the funding — is a public interest mission. “The way you make your budget is by doing something valuable for society.”

Nearly \$1.4 Million has been distributed by The Foundation since 2008 to support OJP; funding has come from grants made possible through unrestricted funds, including the one created by Russell H. and Lucie E. Atwater (pictured below).



CT DDS Families First	●	\$2,000
CT Experiential Learning Center (CELC) Middle School	●●	\$678
CT Irish American Historical Society	●●	\$1,066
CT Parent Power	●●	\$669
CTCORE-Organize Now!	●	\$500
CTLCV Education Fund	●	\$1,000
CUNY Graduate Center	●	\$1,000
Cure Alliance for Mental Illness	●	\$30,000
Dan Cosgrove Animal Shelter	●	\$1,000
Dances with Wood	●●	\$26
Dartmouth College	●	\$2,354
Data Haven — Community Strategies and Knowledge	●	\$45,000
Davis Public Schools Education Foundation	●	\$3,000
Davis United Methodist Church	●	\$21,000
Defenders of Wildlife	●●	\$14,695
Delta Sigma Theta Sorority — New Haven Alumnae Chapter	●	\$300
Dept. of Social Work, Yale-New Haven Childrens Hospital	●	\$1,200
Derby Community Endowment Fund Committee	●	\$17
Derby Day Care Center	●●	\$2,624
Derby High School	●	\$6,556
Derby Historical Society	●●	\$1,192
The Diaper Bank	●●●●●	\$25,951
Direct Relief	●	\$1,000
Doctors Without Borders	●●	\$29,984
Dominican Sisters of Peace	●●	\$1,698
Douglass Fund at the Association Alumnae of Douglass College	●	\$770
Downtown Evening Soup Kitchen	●●●●	\$52,908
DPB Priesthood Association Dominican Friars Guild	●	\$33,508
Dragonheart Vermont	●	\$1,000
The Dudley Foundation	●●	\$52
Duke University	●●	\$3,500
Dwight Hall Yale	●●	\$2,170
E.C. Scranton Memorial Library	●●	\$227
Earthjustice	●	\$1,000
East Haven High School	●	\$1,000
East Haven Public Library Inc.	●●	\$6,652
East Haven Public Television	●●	\$105
East Haven United Inc.	●●	\$105
East Rock Institute Inc.	●●●	\$25,623
East Shore District Health Department	●	\$2,900
Eastern Connecticut State University	●	\$8,800
Ecoworks CT Inc.	●●	\$686
Edgerton Park Conservancy	●●●●●	\$10,625
Edith B. Jackson Child Care Program Inc.	●●	\$1,265
EIR Urban Youth Boxing Inc.	●	\$5,000
Eli Whitney Museum Inc.	●●●	\$2,989

Elm City ChamberFest	●●	\$13,735
Elm City College Preparatory Middle School	●	\$14,900
Elm City Dance Collective Inc.	●●	\$6,906
Elm City Freddy Fixer Parade Committee Inc.	●●●●	\$1,674
Elm City Girls' Choir	●	\$780
Elm City Internationals	●●●	\$40,185
Elm City Montessori School	●●	\$6,491
Elm City Parks Conservancy	●	\$3,500
Elm City Robo Squad	●●	\$3,679
Elm Shakespeare Company	●●●●	\$16,221
Elon University	●	\$3,000
Emerge Connecticut Inc.	●●●●	\$85,137
Emergency Shelter Management Services Inc.	●●	\$49
Emmanuel Church	●	\$3,000
Emory University	●	\$5,000
Endicott College	●	\$5,500
Environment and Human Health Inc.	●●●	\$77,268
Environmental Defense Fund	●	\$5,597
Episcopal Church of St. Paul & St. James	●	\$3,174
Equal Justice Initiative	●	\$1,000
Equal Justice USA	●	\$1,000
Ethnic Historical Archives Center of New Haven Inc.	●●	\$164
The Eugene O'Neill Theater Center	●	\$26,000
Every Town for Gun Safety	●	\$3,000
Fair Haven Community Health Center*	●●●	\$60,000
Fairfield County Community Foundation	●	\$5,000
Families and Friends Against Deportation Inc.	●	\$5,000
Family Centered Services of CT	●●●	\$20,865
Farm & Wilderness Foundation	●	\$2,000
Farnam Neighborhood House	●●●●	\$51,952
Fashion Models Institute	●	\$2,500
Feed Branford Kids	●●	\$1,060
Fellowship Place	●●●●●	\$124,434
FINCA	●	\$300
First Church of Bethlehem	●	\$19,233
First Church of Christ New Haven	●	\$103,514
First Church of Christ New Haven, Ladies Home Missionary Society	●	\$12,767
First Congregational Church Day Care & Nursery Inc. of Cheshire	●●●	\$2,519
First Congregational Church of Branford	●	\$3,000
First Presbyterian Church of New Haven	●●	\$15,265
FISH of Greater New Haven Inc.	●●●●	\$52,385
Fistula Foundation	●	\$2,500
Fit Haven	●●	\$49
Fix and Feed North Haven Inc	●	\$7,500
FOCUS	●	\$1,000

\*a New Haven Healthy Start partner organization; dollar amount includes contract funds.



Foote School		\$5,250	Griffin Hospital		\$9,136
Fordham University		\$3,500	Growing Possibilities Inc.		\$250
Fort Nathan Hale Restoration Projects Inc.		\$25,574	Guardian Ad Litem Services Inc.		\$5,000
The Foundation Center — Billing		\$7,512	Guide Dog Foundation for the Blind		\$9,660
Foundation for the Arts and Trauma		\$60,085	Guilford A Better Chance Inc.		\$3,077
Foundation of the Greater New Haven Chamber of Commerce		\$10,250	Guilford Agricultural Society Inc.		\$1,675
Frances Payne Bolton School of Nursing Annual Fund		\$9,000	Guilford Art Center		\$19,119
Francis Walsh Intermediate School		\$125	Guilford Before and After School Care Program		\$250
Fresh Air Fund		\$726	Guilford Center for Children		\$1,353
Friends Center for Children Inc.		\$5,595	Guilford Community Fund		\$1,600
Friends of Animals		\$10,247	The Guilford Foundation		\$145,773
Friends of Case Memorial Library		\$1,976	Guilford Free Library Assoc.		\$3,200
Friends of Cheshire Public Library		\$8,179	Guilford Fund for Education Inc.		\$200
Friends of East Rock Park		\$1,247	Guilford High School		\$12,328
The Friends of John Slade Ely House For Contemporary Art Inc.		\$1,182	Guilford Interfaith Ministries Inc.		\$1,299
Friends of the Ansonia Nature Center FANCI		\$3,340	Guilford Keeping Society Inc.		\$500
Friends of the Arava Institute		\$360	Guilford Land Conservation Trust		\$1,701
Friends of the New Haven Animal Shelter		\$9,386	Guilford Preservation Alliance		\$2,000
Friends of UNFPA		\$2,500	Guilford Social Services		\$2,675
The Fund for Johns Hopkins University, School of Medicine		\$770	Guns Down Books Up		\$2,500
Fusion Steppers Drill Team & Drum Corp.		\$5,000	Gus Robotics Team Inc.		\$105
G.R.O.W.E.R.S. Inc.		\$1,267	Habitat for Humanity of Greater New Haven		\$23,419
Gal7 Foundation We Stand for Kids		\$1,000	Hadassah		\$1,800
Garden Club of New Haven		\$14,341	Haitian Health Foundation		\$500
Gateway Community College		\$1,000	Halfway Home Rescue Inc.		\$7,500
Gateway Community College Foundation Inc.		\$56,739	Hamden Hall Country Day School		\$50,606
Gaylord Hospital		\$36,963	Hamden High School		\$51,854
George Bush Presidential Library Foundation		\$250	Hamden Land ConservationTrust		\$381
The George Washington University		\$1,000	Hamden Library		\$13,486
Gesell Institute of Child Development		\$135,833	Hamden Symphony Orchestra Inc.		\$1,234
The Get in Touch Foundation		\$1,005	Hamden Transition Academy		\$2,500
Girl Scouts of Connecticut Inc.		\$674	Hannah Gray Home Inc.		\$5,250
Girlfriends Inc. New Haven Chapter		\$2,000	Hartford Catholic Worker House		\$1,000
Give It Up Incorporated		\$2,800	Hartford Stage		\$95,000
Goddard College		\$2,200	Harvard College Fund		\$1,000
Goodspeed Musicals		\$80,000	Harvard University		\$5,000
Goodwill Industries of Southern New England, Inc		\$64,342	Hazelden Foundation		\$15,000
Grace Episcopal Church		\$4,000	Healthy Eyes Alliance		\$55,985
Grant Foundation for Hospital Albert Schweitzer		\$770	Hebrew Burial & Free Loan Association		
Greater New Haven Business & Professional Association		\$26	of New Haven Inc.		\$418
The Greater New Haven Cat Project		\$15,904	Heifer International		\$770
Greater New Haven Chamber of Commerce		\$17,683	Helen Keller International		\$90,000
Greater New Haven Community Chorus		\$24,094	High Hopes Therapeutic Riding Inc.		\$36,000
Greater New Haven Coordinated Access Network		\$4,450	High School in the Community		\$6,676
Greater New Haven Help Alliance Inc.		\$2,678	Higher Heights Youth Empowerment Programs Inc.		\$17,938
Greater New Haven Labor History Association		\$52	Hill House Senior Residence		\$250
			Hill Regional Career Magnet High School		\$17,035

Hispanic Federation		\$5,000
Hispanics in Philanthropy		\$12,500
Hofstra University		\$2,500
Hole in the Wall Gang Camp		\$2,500
Holy Trinity School		\$2,000
HomeFront Inc.		\$3,000
HomeHaven		\$13,744
Hope After Loss		\$7,689
Hopkins School		\$6,779
Horizons at Foote		\$457
Housatonic Council, Boy Scouts of America		\$27,518
Housatonic Valley Association Inc.		\$130
Houston Food Bank		\$5,000
Hugo Kauder Society		\$74
Humane Society of New York		\$9,593
Humane Society of the United States		\$5,097
Idaho Community Foundation — WRWCF		\$1,100
Immaculate Heart of Mary RC Church		\$1,500
Immanuel Missionary Baptist Church		\$3,792
Industrial Opportunities Inc.		\$1,000
Inextricably Bound		\$9,388
The Innocence Project		\$2,000
Intake Organization		\$3,000
Interfaith Peace-Builders		\$2,000
Interfaith Volunteer Caregivers		\$28,970
International Association of New Haven		\$501
International Festival of Arts & Ideas		\$101,180
International Physicians for the Prevention of Nuclear War		\$770
International Rescue Committee		\$46,500
IRIS — Integrated Refugee & Immigrant Services		\$70,033
Israel Cancer Research Fund		\$250
James Blackstone Memorial Library		\$612
James Hillhouse High School		\$121,364
Jamie A. Hulley Arts Foundation		\$500
The Jane Coffin Childs Memorial Fund for Medical Research		\$11,846
Jazz Haven Inc.		\$416
Jewish Cemetery Association of Greater New Haven		\$250
Jewish Community Center of Greater New Haven		\$21,494
Jewish Family Service of New Haven		\$20,950
Jewish Family Service of Stamford Inc.		\$1,500
Jewish Federation of Greater New Haven		\$47,231
Jewish Home for Children		\$828
Jewish Senior Services		\$1,500
Jewish Voice for Peace		\$2,200
John B. Pierce Foundation		\$1,569,000
Joseph Slifka Center for Jewish Life at Yale		\$356



### To Expand the Safety Net

For more than a decade, The Diaper Bank has helped lead a national movement to fill a hole in the basic human needs safety net and expand society’s definition of what a basic human need is in today’s society. Diapers are one of the biggest expenses for families with infants yet no federal or state public assistance programs cover them, which can put children’s health at risk especially in families living at or below the poverty level. The Diaper Bank was started in New Haven in 2004 to fill the gap. In addition to the physical health problems of dermatitis and urinary tract infections in children with infrequent diaper changes, a Yale Study has established a link between diaper need and depression in mothers. Children raised by parents under high levels of stress or depression are likely to act out with behavioral and emotional problems. A diaper shortage also impacts a mother’s ability to return to work because most childcare care centers will not accept a baby without a supply of diapers.

With support from The Community Foundation and other funders, The Diaper Bank has grown to distribute 20 million diapers annually to 60 community partners. The Diaper Bank also has a larger mission of advocating for a public policy that recognizes diapers as a basic human need that should be covered by social programs.

The Diaper Bank has received over \$343,000 of Foundation support since 2006 from funds such as the Anne Hope Bennett Fund established in 1943 for health.





Joseph's House		\$3,000	Making Headway Foundation		\$1,500
Joslin Diabetes Center		\$1,000	Malta Justice Initiative		\$5,000
Julia Day Nursery of Ansonia, Inc		\$261	Malta Prison Volunteers		\$1,000
Jumpstart for Young Children Inc.		\$15,000	Marist College		\$1,000
Junior Achievement of Southwest New England Inc.		\$209	Maritime Aquarium of Norwalk Inc.		\$250
Junior Achievement of Western Connecticut Inc.		\$276	Mark T. Sheehan High School		\$12,899
Junior League of Greater New Haven		\$1,500	Marrakech Inc.		\$16,989
JUNTA for Progressive Action		\$97,831	Mary Lou Pursell Nursing Scholarship Fund Inc.		\$258
Juvenile Diabetes Research Foundation		\$1,000	Mary Wade Home		\$6,859
JWF for Youth Foundation		\$1,000	Masonic Charity Foundation		\$17,689
Keene State College		\$2,500	Massachusetts College of Art		\$3,000
Kelly Ryan Foundation		\$1,099	Massachusetts College of Pharmacy and Health Services		\$2,400
The Kennedy Center Inc.		\$910	Massachusetts Insititute of Technology		\$8,000
Kids HUGS, Inc		\$500	Massaro Community Farm Inc.		\$27,542
Kids Of America's Heroes		\$25	Master's Manna Inc.		\$703
Kingdom County Productions		\$5,000	Master's Table Community Meals Inc.		\$1,819
Kitka Inc.		\$500	Mazon		\$10,000
Kucetekela Foundation		\$500	Mediators Beyond Borders International		\$130,000
Lawrence University		\$1,000	Melissa Jones Elementary School Parent Teacher Organization		\$500
Lawyers for Children America		\$3,000	Menunkatuck Audubon Society		\$204
LEAP		\$138,537	Merrimack College		\$2,500
Learning Ally (formerly Recording for the Blind & Dyslexic)		\$52	Metropolitan Business Academy		\$10,073
Leeway Inc.		\$64,238	Middlesex Community College		\$3,000
Legacy Theatre		\$2,870	Milford Academy		\$1,786
Leila Day Nurseries Inc.		\$55,361	Milford Fine Arts Council		\$5,000
The Leukemia & Lymphoma Society, Connecticut Chapter		\$122	Milford International Little League		\$235
Liberty Community Services Inc.		\$33,079	Milford Public Library		\$3,070
Life Haven		\$101	Minnesota Recovery Connection		\$1,500
Lifelinx Corporation		\$3,500	Mondavi Center at University of California		\$1,000
Light And Life Foundation Inc		\$250	Mooreland Hill School		\$10,000
Lighthouse International		\$9,608	The Morgan School		\$1,727
Literacy Volunteers of Greater New Haven		\$34,085	Mount Holyoke College		\$250
Literacy Volunteers of Southern Connecticut		\$1,811	Mount Saint Michael Academy		\$3,500
Literacy Volunteers Valley Shore		\$908	MRG Foundation		\$1,000
Loaves & Fishes		\$2,136	Muscular Dystrophy Association		\$2,888
Long Wharf Theatre		\$782,443	Music Haven Inc.		\$63,920
Love Center Deliverance Ministries		\$26	Mutual Housing Assoc So. Cntrl CT		\$3,000
Love146		\$404	Mystic Seaport		\$250
Lower Naugatuck Valley Parent Child Resource Center		\$1,290	NAACP Legal Defense and Educational Fund		\$8,000
Lustgarten Foundation		\$500	NAACP, Greater New Haven		\$3,169
Lyman Hall High School		\$5,748	Nation Drill Squad and Drum Corp.		\$5,000
Lyme Connection		\$8,500	National Alliance on Mental Illness, Connecticut		\$250
The Madison Foundation		\$1,453	National Art Museum of Sport		\$1,292
Madison Historical Society		\$2,625	National College of Natural Medicine		\$4,000
Make A Wish Connecticut		\$500	National Humane Education Society		\$5,097
MakeHaven		\$2,000	National Multiple Sclerosis Society		\$500



### To Rise Out of Poverty

The Salvation Army has battled hunger and need in New Haven since it first opened its doors in 1885. The charitable organization offers a food pantry, diapers and other services to help financially struggling individuals and families.

The Salvation Army was founded in London, England in 1865 by a Methodist preacher and his wife. Trying to preach the gospel to people who lived on the streets and in poverty, they recognized that their audience was more willing to listen when it wasn't hungry. They adopted a quasi-military structure that expanded into an international movement that is an evangelical part of the universal Christian Church.

The New Haven Salvation Army food pantry is supplied through a partnership with the Connecticut Food Bank and serves 150-200 families. A partnership with The Diaper Bank enables them to distribute free diapers to 200 children. The New Haven chapter also offers Pathways of Hope, a program that offers case management services to help families build up their strengths and assets to help them rise out of poverty.

In addition to New Haven, The Salvation Army has locations in Ansonia, Milford and Wallingford.

The Salvation Army has received more than \$230,000 of Foundation support since the late 1980s, in part from a fund created by Joseph Stevens (pictured below), which is designated for The Salvation Army and several other organizations.

National Wildlife Federation		\$10,195
Natural Resources Defense Council		\$12,000
The Nature Conservancy		\$6,000
The Nature Conservancy of Connecticut		\$20,543
Neighborhood Housing Services of New Haven		\$38,643
Neighborhood Leadership Program— Grants for Participant Projects		\$68,621
Neighborhood Music School Inc.		\$224,702
New England Mountain Bike Association— Central Connecticut Chapter		\$3,911
New Haven Academy		\$1,002
New Haven Alumnae Chapter of Delta Sigma Theta		\$2,261
New Haven Ballet		\$10,650
New Haven Bird Club		\$2,841
New Haven Board of Education Committee		\$2,000
New Haven Board of Park Commissioners		\$14,197
New Haven Chamber Orchestra		\$3,013
The New Haven Chapter of Links Inc.		\$1,500
New Haven Chorale		\$50,989
New Haven Early Childhood Council		\$4,000
New Haven Ecology Project (Common Ground)		\$77,806
New Haven Family Alliance*		\$40,000
New Haven Farms		\$49,349
New Haven Firebird Society		\$1,000
New Haven Folk Inc.		\$1,402
New Haven Free Public Library		\$149,635
New Haven Free Public Library Foundation		\$15,084
New Haven Green Fund Inc.		\$66,030
New Haven Heat Basketball		\$1,000
New Haven Hebrew Day School		\$500
New Haven HomeOwnership Center		\$98
New Haven Kiwanis Club		\$878
New Haven Land Trust Inc.		\$143,077
New Haven Law Enforcement Assisted Diversion Initiative		\$35,000
New Haven Legal Assistance Association Inc.		\$127,991
New Haven Metropolitan Chapter of The National Coalition of 100 Black Women Inc.		\$852
New Haven Museum and Historical Society		\$872,074
New Haven Oratorio Choir		\$5,284
New Haven Paint & Clay Club		\$6,059
New Haven Pop Warner Football (Pop Warner Little Scholars Inc)		\$2,000
New Haven Preservation Trust		\$21,995
New Haven Pride Center		\$1,000
New Haven Promise		\$225,642
New Haven Promise — Partnerships		\$185,000
New Haven Public Schools		\$24,063



New Haven Reads	●●●●●	\$63,229
New Haven Real Estate Educational Foundation Inc. Fund	●	\$10,500
New Haven Rotary Charitable Scholarship Trust	●	\$7,000
New Haven Scholarship Fund Inc.	●●●●●●●	\$79,755
New Haven Science Fair — Greater New Haven Chamber of Commerce	●●	\$4,700
New Haven Symphony Orchestra	●●●●●●●	\$576,674
New Haven Works	●●	\$624
New Haven Youth Soccer Association	●●	\$908
New Haven Youth Tennis Education	●●	\$2,397
New Haven/Leon Sister City Project	●●●●●	\$8,766
New Israel Fund	●	\$3,000
New Reach	●●●●●●●	\$63,861
New York Medical College	●	\$1,000
New York University	●●	\$12,500
NHdocs: The New Haven Documentary Film Festival	●	\$3,500
NHSO Foundation Inc.	●	\$54,105
Nonviolent Peaceforce	●	\$4,000
North Branford High School	●	\$1,758
North Branford Land Conservation Trust	●●	\$1,623
North Haven High School	●●●	\$5,870
North Haven Trail Association	●	\$5,000
Northwest Connecticut Community Foundation Inc.	●	\$2,701,647
Northwestern University Kellogg School of Management Annual Fund	●	\$5,000
Notre Dame High School	●●	\$12,181
NTM Info & Research	●	\$3,000
Nutmeg Big Brothers Big Sisters	●	\$2,500
Nuts About Health	●●	\$156
Oakland University	●	\$2,000
Oceana	●	\$2,000
Omega Psi Phi Fraternity Inc.— Chi Omicron Chapter	●	\$290
Online Journalism Project Inc.	●●	\$67,141
Open Communities Alliance	●	\$1,000
Operation Fuel Inc.	●	\$15,750
Opportunity International	●	\$2,500
The Optimates Society	●	\$3,922
Orange Town Hall	●	\$5,879
Orchard House (Medical Adult Day Center)	●●●	\$9,914
Orchestra New England	●●●●●	\$2,516
Oregon Humanities	●	\$500
Outer Island Fund for Education and Research	●	\$48,352
Oxfam America	●	\$38,000
Oxford Historical Society Inc.	●●	\$358
Pantochino Productions	●●	\$10,251
Pardes Scholarship Fund	●	\$360
Peabody Museum of Natural History	●●●●●	\$38,697

Pequenas Ligas Hispanas de New Haven	●●	\$29,638
The Perfect Blend Inc	●	\$5,000
The Pike School	●	\$6,000
Pivot Ministries Inc.	●	\$250
Planned Parenthood Mar Monte — Sacramento	●	\$3,000
Planned Parenthood of Southern New England	●●●●●	\$26,676
Police Activity League of New Haven Inc.	●	\$3,500
Pomona College	●	\$1,000
Port Orange Presbyterian Church	●	\$2,000
Precious Angels and Precious Jewels Club	●	\$5,000
Presbyterian Church of Old Greenwich	●	\$15,500
President and Fellows of Middlebury College	●	\$50,000
Princeton University	●	\$2,000
Priscilla Maxwell Endicott Scholarship Fund	●	\$11,728
Pro Bono Partnership	●●●●	\$10,200
Progressive Education & Research Assoc. Inc.	●●	\$1,089
Project Access of New Haven	●●●●●	\$51,273
Project Youth Court Inc.	●●	\$1,262
The Prosperity Foundation	●●	\$60,858
Province of St. Augustine	●	\$9,593
Public Allies Connecticut	●	\$10,000
Puerto Rico & Caribbean Hurricane Relief Fund	●	\$2,000
Quinnipiac River Watershed Association	●●●	\$1,725
Quinnipiac University	●●●	\$35,500
r kids Inc.	●●●	\$29,274
Rails-to-Trails Conservancy	●	\$500
Rain of Hope, Inc	●	\$769
Rape Crisis Center of Milford Inc.	●●	\$129
Reach Out and Read	●●●	\$15,287
Read to Grow	●●●●●	\$22,435
Recreation Camp Inc.	●●	\$606
Red Sky Foundation	●●	\$2,562
Re-Entry Ministry Inc.	●	\$500
Reformed Church of Highland Park	●	\$770
Regional Data Cooperative, dba Data Haven	●●	\$1,057
Regional Mental Health Board — Region II	●●	\$3,500
Rescue Fire Company #5	●	\$5,038
Rethinking Schools	●	\$1,000
River Advocates of South Central CT	●	\$10,000
Romemu	●	\$4,620
Ronald McDonald House of CT Inc.	●●●	\$1,844
Roots 4 Relief	●●	\$876
Royal Conservatory of Music	●	\$100,229
Russell Trust Association (RTA)	●	\$250
Sacred Heart Academy	●●●	\$25,225
Sacred Heart Church	●	\$11,459

Sacred Heart University	●	\$2,640
Sage College of Albany	●	\$1,000
The Sage School	●	\$5,000
Saint Francis & Saint Rose of Lima School	●●	\$44,739
Saints Aedan Brendan Parish	●	\$11,459
Salvation Army, ARC	●●●●	\$9,604
The Salvation Army (Milford Service Unit)	●	\$90
Salvation Army, Territorial Headquarters	●	\$9,593
Sanctuary For Families Inc.	●	\$500
SARAH Foundation	●●●	\$38,166
Save the Children	●	\$2,000
Save the Children Federation	●	\$8,000
The School for Ethical Education	●	\$260
Send International	●	\$1,500
Seton Hall University	●	\$6,000
Seymour Ambulance Association	●●	\$125
Seymour High School	●	\$7,260
Seymour Historical Society	●	\$21,442
Seymour Pink Inc.	●●	\$3,077
Seymour Public Library	●	\$42,872
Shadoh Boxx Theatre	●	\$2,500
Sheehan High School	●	\$12,633
Shelton Economic Development Corporation	●●	\$293
Shelton High School Robotics Team	●●	\$13,086
Shelton Historical Society Inc.	●●	\$1,734
Shelton Land Conservation Trust	●●	\$255
Shelton Volunteer Fire Co#4 Pine Rock Park	●●	\$197
Shepherds Inc.	●●	\$7,500
The Sherwin B. Nuland Foundation for Palliative Care	●	\$2,500
Shoreline Arts Alliance	●●●	\$4,374
Shoreline Chamber of Commerce	●	\$440
Shoreline Greenway Trail Inc.	●●●●	\$6,017
Shoreline Theatrical Arts	●	\$20,000
Shoreline Village CT	●●●	\$22,243
Short Beach Union Church	●	\$5,500
Short Term Emergency Aid Committee	●	\$2,000
Shriners Hospitals for Children	●	\$17,689
Sickle Cell Disease Association of America, Southern Connecticut	●●●●	\$35,098
Siena College	●	\$1,500
Sierra Club Foundation	●	\$3,000
Silvermine Arts Center	●	\$4,000
SIM USA	●	\$250
Simmons College	●	\$2,000
Sister's Journey Inc.	●●	\$2,739
Site Projects Inc.	●●	\$4,291
Sleeping Giant Park Association	●	\$1,250



To Get a College Education

Evidence has shown that higher education in today’s economy creates a path to individual economic opportunity and competitive advantages throughout one’s life. According to the US Department of Education, the share of jobs requiring some level of higher education is expected to grow even more rapidly over the next decade, with 11 of the 15 fastest-growing occupations requiring a postsecondary education. With this knowledge in mind, The Foundation remained one of the largest supporters of New Haven Promise, which awarded college scholarships to 359 graduating New Haven high school seniors in 2017. The Foundation invested more than \$450,000 in operating support for New Haven Promise in 2017.

The Foundation granted an additional \$900,000 from 86 scholarship funds to help 230 more students across the region. Scholarship eligibility varies based on the criteria established by fund founders. In addition to financial need, other qualification criteria may include area of study, school choice, academic or athletic ability, and affiliation. An example of the latter is The Lee Scholarship Fund for the benefit of children or spouses of full-time Lee Company employees. It was created from a strong belief in the value of education. The Lee Company is a Connecticut-based leading supplier of miniature, precision fluid control products to a wide range of industries including aerospace, high performance race cars, oil exploration, automotive and off-highway equipment, and medical/scientific instruments.

More than \$1.1 Million has been distributed through the Lee Scholarship Fund since it was established at The Foundation in 1999 by Marietta and Leighton Lee II (pictured below), and the Lee family.





Smilow Cancer Center — Yale New Haven Hospital		\$19,000
Smith College		\$16,874
Solar Youth		\$49,268
SONCCA (Seymour/Oxford Nursery & Child Care Assoc. Inc.)		\$31
Sostenica Inc.		\$250
Sound School		\$5,793
Sounds of Summer Music Festival		\$250
South Central Connecticut Regional Water Authority		\$3,500
South Central Regional Economic Development Corporation		\$873
Southern Connecticut State University		\$37,883
Southern Connecticut State University Foundation Inc.		\$1,250
Southern CT State University		\$13,387
Southern Poverty Law Center		\$8,000
Southington High School		\$682
Southwestern Area Health Education Center Inc.		\$313
Southwestern CT Agency on Aging		\$1,516
Spanish Community of Wallingford		\$33,247
Special Olympics of Connecticut		\$2,000
Sphere Inc.		\$1,500
Sportsometry		\$28,316
Spring Glen Church Nursery School		\$813
Springfield College		\$3,800
Springs Learning Center		\$7,375
Square Foot Theatre Company		\$6,284
Squash Haven Inc.		\$51,797
St John Community Foundation		\$10,000
St Paul & St. James Episcopal Church		\$2,000
St Vincent dePaul Society Soup Kitchen/Food Pantry		\$250
St. Anthony Trust of Hartford Inc.		\$500
St. George Church Food Pantry		\$325
St. John's Episcopal Church		\$3,046
St. Joseph School		\$5,000
St. Jude Children's Research Hospital		\$6,000
St. Lawrence University		\$2,500
St. Luke's Episcopal Church		\$1,840
St. Martin de Porres Academy		\$38,846
St. Mary School		\$1,000
St. Mary St. Michael School		\$10,295
St. Patrick's Church and Parish		\$11,459
St. Paul's School		\$250
St. Vincent de Paul Society of Shelton Inc.		\$1,068
Stamford Hospital Foundation		\$1,000
Stanford Fund (1970)		\$500
Stanford University		\$12,000
Stanford University, Center of Deliberative Democracy		\$130,000
Starfishgirl Anti-Stalking Campaign		\$787
Start The Outreach Promise		\$1,500
Stony Creek Cemetery Association Inc.		\$5,038
Student Diplomacy Corps Inc.		\$10,000
Student Parenting and Family Services Inc.		\$1,343
Stylettes Drill Team and Drum Corp. Inc.		\$5,150
Suffield Academy		\$750
Sunshine Golden Retriever Rescue Corp.		\$33
SUNY New Paltz		\$500
SUNY-ESF		\$2,500
Tail To Paw Animal Support		\$2,887
TEAM Inc.		\$7,016
Ted and Luisa DeLauro Community Fund		\$595
Temple Beth El		\$1,575
Texas A&M University — Corpus Christi		\$2,500
Theta Epsilon Omega Chapter of Alpha Kappa Alpha		\$1,000
Thirteen — WNET		\$1,000
This Child Here		\$1,000
Thomas F. Keyes, Jr. Grant Fund		\$1,000
Thompson Child & Family Focus		\$250
Three Rivers Community College		\$1,500
Tommy Fund for Childhood Cancer (Tommy Fund Inc.)		\$250
The Towers Foundation		\$6,825
Town of Branford		\$1,500
Town of Hamden		\$22,500
Town of Old Saybrook, Social Services		\$2,550
Transition Projects		\$1,500
Transitions Clinic Network		\$33,025
Trauma Recovery EMDR-Humanitarian Assistance Programs		\$4,250
Treasured Time		\$514
Trinity Church on the Green		\$16,561
Trinity College		\$1,000
Trinity Episcopal Church		\$1,000
Trinity Lutheran Church		\$93,685
Trinity School		\$2,451
True Colors Inc. Sexual Minority Youth and Family Services of CT		\$52
The Trust for Public Land		\$1,000
Turning Point Center of Central Vermont		\$7,500
Turning Point Center of Chittenden County		\$3,000
Turning Point of Franklin County		\$7,500
Ulysses S. Grant Foundation		\$22,700
Unidad Latina Accion		\$26,000
United Negro College Fund		\$5,000
United States Committee for UNICEF		\$250
United Way of Coastal Fairfield County		\$5,000
United Way of Greater New Haven		\$195,220
United World Mission		\$4,000



### To Have a Home

Teenagers who couch surf and live on the streets are at a high risk of growing up to be homeless adults. Working to break this cycle, Youth Continuum constructed Winchester Manor, a housing complex in New Haven with supportive services for vulnerable young men and women ages 18-24. The facility is the first permanent supportive housing for youth in Connecticut and is expected to be a model for the nation. The project has received support from the state Department of Housing, Department of Children and Families, Corporation for Supportive Housing, Melville Trust and the Seedlings Foundation.

Construction of Winchester Manor began in May 2017 and doors opened in December. The complex has seven single-bedroom units and provides a range of services to help the young men and women transition from homelessness to a stable living situation. Residents are required to sign a lease and pay one-third of their income toward rent. While the ultimate goal is to see each resident move out to live on his or her own, there are no limits on length of stay presently.

Founded in 1966, Youth Continuum has worked with the at-risk youth population for more than five decades. The agency serves over 1,500 young people annually with comprehensive services for homeless and runaway teens, those leaving the foster care system and youth in the criminal justice system.

Just over \$900,000 has been awarded to support Youth Continuum since 1990 from Foundation funds such as the Florence (Florrie) Rice Fund, which states a preference for helping inner city development programs for disadvantaged youth in the City of New Haven. Florrie is pictured below.

Unity College		\$5,200
Universal Health Care Foundation of Connecticut		\$1,091,800
University of Arizona		\$8,100
University of Chicago, The College Fund		\$500
University of Connecticut		\$51,768
University of Connecticut Development Office		\$2,500
University of Connecticut Foundation Inc.		\$614
University of Connecticut, Waterbury		\$5,796
University of Exeter		\$3,000
University of Maine		\$3,500
University of Maryland		\$6,700
University of Michigan		\$5,000
University of Minnesota Fdn/School of Nursing		\$1,000
University of New England		\$1,000
University of New Hampshire		\$12,650
University of New Haven		\$31,000
University of New Haven, Department of Biology		\$22,500
University of North Carolina — Chapel Hill		\$2,000
University of Pennsylvania		\$2,000
University of Rhode Island		\$6,900
University of South Carolina		\$500
University of Vermont, Student Financial Services		\$5,000
Urban Improvement Corporation		\$8,358
Urban League of Southern Connecticut		\$6,882
Urban Philanthropic Fund Inc.		\$1,043
Urban Resources Initiative		\$52,676
URU, The Right to Be Inc.		\$2,000
Valley Arts Council		\$578
Valley Community Foundation Inc.		\$4,119
Valley Emergency Medical Services		\$52
Valley Independent Sentinel (Online Journalism Project)		\$25
Valley Shakespeare Festival		\$2,809
Valley United Way		\$6,434
Vantage Group Inc.		\$7,275
Varick Memorial A.M.E. Zion Church		\$90
Vassar College, Alumni Fund		\$4,000
Veteran Angler Charters Inc.		\$129
Victim Rights Center of Connecticut		\$206
Village Improvement Association		\$927,347
Visiting Nurse Association of Ridgefield		\$3,000
Visiting Nurse Association of South Central Connecticut		\$12,116
VNA Community Healthcare		\$10,368
Volunteer Services Center Inc.		\$35,264
Wallingford Family YMCA		\$52
Wallingford Public Access Association, Inc		\$2,578
Wallingford Public Library		\$500



Walnut Hill School	●	.....	\$500
Walter Pop Smith League — New Haven	●●	.....	\$5,749
Ward-Heitmann House Museum Inc.	●●	.....	\$229
WaterAid America Inc.	●	.....	\$7,000
The Watershed Fund Inc.	●	.....	\$3,000
Wesley Heights Inc.	●●	.....	\$98
West Haven Chamber of Commerce Foundation	●	.....	\$500
West Haven Child Development Center	●●●	.....	\$24,833
West Haven Community House	●●●●	.....	\$108,877
West Haven High School	●●	.....	\$26,623
West Haven Historical Society	●	.....	\$500
Western Connecticut State University	●	.....	\$3,000
Western New England Psychoanalytic Institute	●	.....	\$6,024
Westminster School	●	.....	\$250
Westport Center for Senior Activities	●	.....	\$22,500
Westport Country Playhouse	●	.....	\$55,600
Westville Community Nursery School Inc.	●●●	.....	\$10,539
Westville Synagogue	●	.....	\$500
Westville Village Renaissance Alliance	●●	.....	\$3,067
WHEAT Inc.	●●●	.....	\$4,417
Where The Love Is Inc.	●	.....	\$7,500
The Whitney Players Theater Company Inc.	●●	.....	\$7,841
Whitneyville United Church of Christ	●	.....	\$7,376
Wilbur Cross High School	●●	.....	\$8,940
Willamette Riverkeeper	●	.....	\$500
Wilton Library Association	●	.....	\$208
Wint Filipek Sr. Memorial Tennis Tournament/ Scholarship Fund Inc.	●	.....	\$250
WMNR Fine Arts Radio	●●	.....	\$1,025
WNPR-FM	●	.....	\$234
WNYC — New York Public Radio	●	.....	\$500
Wolf Conservation Center	●	.....	\$250
Women and Family Life Center	●●●●●	.....	\$27,132
Women In Need Inc.	●	.....	\$10,000
Women in Recovery Education Corporation	●	.....	\$2,000
Women's Health Research at Yale	●●●●●	.....	\$74,040
Women's Recovery Corp.	●●●	.....	\$1,909
Woodbridge Town Library	●	.....	\$4,170
Wooster Square Conservancy Inc.	●	.....	\$500
The Workplace Inc.	●●	.....	\$26
World Wildlife Fund	●●●●	.....	\$9,691
WPKN-FM,89.5	●●●	.....	\$504
WSHU Public Radio	●●	.....	\$448
Xavier High School	●	.....	\$1,519
Y. Humanist Community Inc.	●	.....	\$2,000
Yale Cancer Center	●	.....	\$178,341
Yale Center for British Art	●	.....	\$500



To Have Safe and Livable Neighborhoods

When neighbors transform a vacant lot or trash strewn curbside into a flowering pocket park or garden, they are doing more than planting bulbs and shrubs. They are building strong communities where people care about one another and the places they live.

“These places undergo magical transformations. Children are now playing in parks that had been dumping grounds,” says Collen Murphy Dunning, Executive Director of Urban Resources Initiative (URI), which runs the Community Greenspace program in New Haven. URI provides technical assistance to 50 volunteer groups around the city, each maintaining a little urban oasis. It also hosts an annual tour of Greenspaces and an end-of-year party that is open to the public.

The Community Greenspace program was launched in 1995 as part of The Foundation’s Community Greenspace and Community Garden program. Since then, the program has split and is now run by two nonprofits. URI manages the Community Greenspace effort (landscaping and flowering plantings) and the New Haven Land Trust manages the Community Garden program (creating vegetable gardens and teaching residents about growing food). The Foundation continues to support both programs through grantmaking.

URI is both a nonprofit and a program of the Yale School of Forestry and Environmental Studies. Its other core program is Greenskills, which pairs city youth and ex-offenders with Yale interns to learn urban forestry skills. Participants plant trees at the request of property owners and create green infrastructure such as bioswales that naturally filter pollutants from storm water runoff.

Since 1993, more than \$860,000 has been distributed to URI from a variety of Foundation funds, including a designated fund established in 2003 by Toddie and Christopher Getman (pictured below).



Yale Child Study Center	●●	.....	\$1,770
Yale China Association	●●	.....	\$3,108
Yale Club of New Haven	●	.....	\$3,269
Yale Humanist Community Inc.	●●	.....	\$572
Yale Law School	●	.....	\$780
Yale New Haven Hospital*	●●●●	.....	\$128,000
Yale New Haven Hospital Office of Development	●	.....	\$500
Yale New Haven Hospital Saint Raphael Campus	●	.....	\$26,101
Yale Orthopaedics and Rehabilitation	●	.....	\$36,000
Yale Repertory Theatre	●	.....	\$31,075
Yale School of Drama	●●●	.....	\$20,105
Yale School of Forestry & Environmental Studies	●	.....	\$5,000
Yale School of Medicine	●●	.....	\$5,279
Yale School of Medicine — Department of Surgery	●	.....	\$1,000
Yale School of Medicine Section of Plastic	●	.....	\$2,000
Yale School of Music	●	.....	\$322
Yale School of Public Health	●	.....	\$10,000
Yale University	●●	.....	\$5,250
Yale University Art Gallery	●●●●	.....	\$9,655
Yale University Collection of Musical Instruments	●	.....	\$9,110
Yale University Contributions Processing	●	.....	\$7,500
Yale University Department of Athletics	●	.....	\$250
Yale University Department of Pediatrics	●	.....	\$334
Yale University Grant & Contract Administration	●	.....	\$33,000
Yale University Library	●	.....	\$9,825
Yale University Office of Development	●	.....	\$500
Yale University Office of New Haven and State Affairs	●	.....	\$6,418
Yale University Women’s Organization	●●	.....	\$11,728
YMCA-Friends of Boys	●	.....	\$10,818
Yoga4Change	●	.....	\$6,300
Yolo Food Bank	●	.....	\$3,000
Young Life of Greenwich	●	.....	\$500
Young Men’s Institute Library	●●●●	.....	\$13,923
Youth Continuum Inc.	●●●●	.....	\$83,830
Zack’s Place	●	.....	\$1,000
Zygote Press	●	.....	\$250



To Be Your Best Self

St. Martin de Porres Academy opened its doors twelve years ago with the promise of giving life-changing opportunities to disadvantaged kids. That promise is being fulfilled as the first graduates are now in college making dean’s lists and winning awards at schools such as Villanova, Fairfield, St. Lawrence and Princeton.

The secret to success for the tuition-free 5-8 grade middle school has been creating a culture where every student has the desire to “be his or her best self.” That starts with students committing to a 10-hour school day and 11-month school year.

The extra time allows the school to provide a holistic education that includes playing an instrument and a breadth of extracurricular activities. Following an afterschool homework time, students participate in a sport and can choose from a variety of classes and clubs such as cooking, crafts, community service and even a “fix it” club led by a board member who teaches how to make basic home repairs.

Students also go on extended field trips, most notably to a dairy farm in Vermont where they milk cows, make cheese and tap maple trees. The students have also gone to the Woods Hole Oceanographic Institution to study the ocean and environmental science.

In addition to learning something new, the students gain an awareness of different life opportunities that they would otherwise never see.

St. Martin de Porres has received support from Foundation funds since 2007 totaling nearly \$530,000. Grants have been distributed from funds such as the Nathanael V. Robert Fund, established by Nathanael’s parents Clare and Patrick (pictured below), in loving memory of their son who was passionate about music. The Roberts also established a scholarship fund in Nate’s name at the school.







The Foundation works closely with area attorneys, bankers, accountants and financial planners to share what we know about nonprofits and opportunities to give.

In 2017, The Foundation recorded its first fund established through the *Custom Investment Partnership Program*, which began a year earlier.

The *Custom Investment Partnership Program* provides professional advisors an additional way to remain involved in fulfilling their clients' charitable goals by maintaining their investment advisory role over their client's assets. Here is a list of professional advisors that partner with us.

Deborah Abildsoe  
*GSB Wealth Management*

Edward "Ted" Almy Jr.  
*The Almy-Roberts Group*

Donald W. Anderson  
*Brenner, Saltzman & Wallman LLP*

Helene Augustine, CTFA  
*Wells Fargo Private Bank*

Greg R. Barringer, Esq.  
*Reid and Riege, P.C.*

Patricia Beauregard, Esq.  
*Cummings & Lockwood LLC*

Thomas Beirne III, CFP  
*Halsey Associates*

Andrew Boone  
*UBS Financial Services Inc.*

Stearns J. Bryant Jr.  
*Nugent & Bryant*

Karen L. Clute, Esq.  
*Wiggin & Dana LLP*

William S. Colwell, Esq.  
*Parrett, Porto, Parese & Colwell PC*

Timothy W. Crowley  
*Crowley Law Offices*

Christine L. Curtiss, Esq.  
*Cohen & Thomas*

Elwood B. Davis  
*Northeast Financial Consultants Inc.*

Lisa Nachmias Davis  
*Davis, O'Sullivan & Priest LLC*

Kevin J. DiAdamo, Esq.  
*Law Office of Kevin J. DiAdamo, Esq.*

Timothy Dillon, Esq.  
*Sheehy & Dillon*

Richard J. DiMarco  
*Cohen & Wolf PC*

Victoria DiSesa, Esq.  
*DiSesa & DiSesa*

Stan R. Dombroski, Esq.  
*Dombroski Hillis LLC*

John H. Driscoll Jr., JD, LLM, CFP  
*Webster Private Bank*

Christian Edmonds, Esq.  
*Christian P. Edmonds PC*

Barbara Ellinghaus  
*Morgan Stanley Smith Barney*

Theodore F. Ells, Esq.  
*Theodore F. Ells Law Office*

James E. Fischer, Esq.  
*Fischer & Fischer*

Norman F. Fishbein, Esq.  
*Fishbein Law Firm LLC*

Norman Forrester, CRPC  
*Merrill Lynch Wealth Management*

Colin M. Gershon, Esq.  
*Colin M. Gershon Attorney at Law*

Christopher Getman  
*Fairfield, Bush & Co.*

Marshal D. Gibson, Esq.  
*Law Offices of Marshal D. Gibson PC*

John D. Gordon, CPA  
*Donald L. Perloth & Company*

Frances B. Granquist, Esq.  
*The Pellegrino Law Firm PC*

Paul Greenberg  
*Ritch, Greenberg & Hassan PC*

George Guertin, Esq.  
*Guertin & Guertin LLC*

Michael J. Gulish, CFP  
*LPL Financial*

Michael Haggerty  
*UBS Financial Services Inc.*

Elizabeth R. Hartmayer  
*Merrill Lynch Investment Managers*

Geoffrey A. Hecht  
*Caplan & Hecht LLC*

Kimberly Hurd  
*Benjamin F. Edwards & Co.*

Thomas L. Hutchison  
*Merrill Lynch, The GKH Group*

David Kesner, Esq.  
*Wiggin & Dana LLP*

Charles C. Kingsley, Esq.  
*Wiggin & Dana LLP*

Charles F. Kreitler  
*Kreitler Financial*

Robert P. Kreitler  
*Kreitler Financial*

Mr. David Ladd  
*Ladd Capital Management*

Michelle R. Lavigne, CFP  
*Adaptive Wealth Management LLC*

Frederick P. Leaf, Esq.  
*Frederick P. Leaf Attorney at Law*

Donna Levine, Esq.  
*Law Office of Donna R. Levine*

Barbara B. Lindsay, Esq.  
*Barbara B. Lindsay LLC*

Ingi-Mai Loorand, Esq.  
*Neubert, Pepe & Monteith PC*

Pamela J. Matocha, CPA  
*T.M. Byxbee Company PC*

Sheldon A. Messinger, Esq.  
*Law Offices of Sheldon Messinger*

Francis H. Michaud Jr., CPA, CGMA  
*Michaud, Accavallo, Woodbridge & Cusano LLC*

Joan C. Molloy, Esq.  
*Loughlin FitzGerald PC*

Martha Murray, Esq.  
*Martha Murray, Attorney-at-Law*

Charles Noble III  
*Noble Wealth Advisors*

Susan B. Nobleman  
*Gesmonde, Pietrosimone & Sgrignari LLC*

Darin L. Offerdahl, MBA, CPA  
*Michaud, Accavallo, Woodbridge & Cusano LLC*

Bette Lynn Paez, CFP  
*Bette Lynn Paez LLC*

Laura Palumbo  
*Cetera Advisors Networks LLC*

Gregory J. Pepe, Esq.  
*Neubert, Pepe & Monteith PC*

Matthew R. Peterson  
*Carmody Torrance Sandak & Hennessey LLP*

Henry T. Petry, CLU, ChFC  
*Henry T. Petry, CLU, ChFC*

Louis R. Piscatelli  
*Withers Bergman LLP*

Kathy Priest, Esq.  
*Davis, O'Sullivan & Priest LLC*

Diane D. Ruben  
*Winnick, Ruben, Hoffnung, Peabody & Mendel LLC*

Michael D. Saffer, Esq  
*The Pellegrino Law Firm PC*

Stephen L. Saltzman, Esq.  
*Brenner Saltzman & Wallman LLP*

Anthony Santore, CPA  
*Beers, Hamerman, Cohen & Burger PC*

Steven D. Sax  
*Merrill Lynch, Pierce, Fenner & Smith Inc.*

David R. Schaefer, Esq.  
*Brenner, Saltzman & Wallman LLP*

Irving S. Schloss, Esq.  
*Murtha Cullina LLP*

Anthony Scillia  
*Marcum LLP*

Sandra Vigliotti Senich  
*U.S. Trust, Bank of America*

Fred D. Sette, Esq.  
*Sette & Parnoff PC*

Fay Sheppard, CRPC, MBA  
*Wells Fargo Advisors*

Michael I. Silverberg, CLU, ChFC  
*Lindberg & Ripple*

Mark Sklarz, Esq.  
*Green & Sklarz LLC*

Laura M. Sklaver, Esq.  
*Susman Duffy & Segaloff PC*

Daniel M. Smith, JD, CFBS, AEP, CLTC, SCP  
*Daniel M. Smith & Associates*

Ronald A. Soccoli Jr.  
*Brenner, Saltzman & Wallman LLP*

Gregory J. Stamos, Esq.  
*Law Office of Gregory J. Stamos*

Frederick Stanek, Esq.  
*Welch, Teodosio & Stanek*

Thomas M. Sutnik, Esq.  
*Law Offices of Thomas Sutnik*

Dominick J. Thomas Jr.  
*Cohen & Thomas*

Marilyn N. Toland, Esq.  
*Toland Law Firm*

Alan J. Tyma, Esq.  
*Ryan & Tyma LLP*

Paul A. Veiga, CFP  
*U.S. Trust, Bank of America*

Thomas J. Welch, Esq.  
*Winnick, Vine, Welch & Teodosio*

Shelby L. Wilson  
*Berchem, Moses & Devlin PC*

Karen E. Yates  
*LeClairRyan*

John J. Zaprzalka, CPA  
*Apicella, Testa & Company PC*





The Nettie J. Dayton Circle members listed here have planned a bequest to The Foundation in their will. In so doing, they ensure that resources will be available to meet our community’s future needs.

- Anonymous (28)  
 Elaine R. Anderson  
 Lisa F. Arpaia, Esq.  
 Louis G. Audette II  
 Dr. Leon Bailey, Jr.  
 Henry E.\* & Nancy H. Bartels  
 Myrna F. Baskin  
 Ronald Bell  
 Rita D. Berkson &  
 Randolph B. Reinhold  
 The Berry Hulin Family  
 Carla A. Birmingham  
 Richard Blacher  
 Pamela C. Boller  
 Richard J. & Joan Bonomi  
 Dr. Harold D. &  
 Maureen L.\* Bornstein  
 Robert & Kathleen Bradley
- Jay Bright  
 William Brink  
 Tony Cafiero & Heather Rife  
 Mary Carey  
 Barbara W. Carlson  
 Elizabeth Ann Ceccarelli  
 Phyllis E. Ceccarelli  
 Peter Ciardiello  
 Brad Collins & Nancy Clayton  
 William S. Colwell  
 Bob & Mary Beth Congdon  
 Ann S. Dahl\*  
 Elizabeth Demir  
 Ann Pecora Diamond  
 Severio & Janice Fodero  
 Susan I. Fowler  
 Christopher & Toddie Getman  
 Lindy Lee Gold  
 Ruth B. Grannick  
 Henry S. Harrison  
 Paul Hermes  
 John & Lesley Higgins-Biddle

- Ralph C. Jones  
 Annie Garcia Kaplan  
 James Kasper  
 John P.W. Kelly  
 Frank Kenna Jr.\* & Joan Kenna  
 John D. Kernan Jr. &  
 Karen Kernan  
 Harvey\* & Ruth Koizim  
 Edward Konowitz  
 David A. Krett Jr.  
 Richard B. Larson  
 William & Carolyn Lieber  
 Lawrence & Susan Liebman  
 Bruce R. Lively  
 Mary F. Lowery  
 Robert\* & Joyce Mailhouse  
 Jean B. & M. Anne Mauro  
 Carolyn M. Mazure  
 Phyllis McDowell  
 Marcia Mersey  
 Maria Mojica & Edgar Colon  
 Carol Nardini  
 Minot & Alcyn Nettleton  
 Barbara Nicolazzo
- Jim & Mimi Niederman  
 David O’Sullivan  
 Maryann Ott  
 Margaret L. Ottenbreit  
 Cynthia Parker  
 Fred J. Pasqualoni  
 Barbara Pearce & Norman  
 Fleming  
 Catherine P. & Edward\*  
 Petraiuolo Jr.  
 Dagobert & Nancy Pfeiffer  
 Katharine C. Pierce  
 Ed & Margie Pikaart  
 Angela G. Powers  
 Douglas W. Rae  
 Jean M. Richards  
 Patrick B. Rowland &  
 Lisa A. Kwesell  
 Shelly & Richard Saczynski  
 David R. Schaefer  
 Irene Scheld  
 Judith Schurman  
 Mr. and Mrs. Anthony P. Scillia

- Jane Steidley Shaw  
 Teresa M. Sirico  
 Carol Lynn Sirot  
 Jane Snaider  
 Kerala & Richard Snyder  
 Sara R. Stadler  
 David Stagg & Suzanne Lagarde  
 Patsy Taylor  
 Marcia & Tom Turner  
 Anne Rodrigues Voloshin  
 Jeffery T. Wack  
 Patricia L. Wales  
 Glenn & Dotty Weston-Murphy  
 Vivien K. White  
 Mary Elizabeth Wiedersheim  
 Kimberly P. Williams  
 Family Fund  
 Pug & Dee Winokur  
 George Zdru



Throughout the year, our volunteers contribute vast amounts of time and skill to help us advance our mission. Each brings unique perspectives and experiences that represent the very best of our community and are amplified when blended together. We remain grateful and inspired by their deep-rooted commitment to this place we call home.



Gardner T. Abbott  
Doreen Abubakar  
Marie Acquavita  
Helen B. Adams  
Sharmay Adams  
Susan S. Addiss  
Nancy O. Alderman  
Nancy Alexander  
Janet Alfano  
Tatiana Alicea  
Whitney Allen  
DeAri Allick  
Jasmine Almeida  
Yahaira Alvarado  
Mary Alvarez  
Nadia Ameen  
Yasmin Amico  
Yury Maciel Andrews  
Gerald M. Antunes  
Esther Armmand  
Stephen August  
Michelle Baker  
Latoya Baldwin  
Asia Barnes  
Willette Barnett  
Patricia Barrett  
Leshe Barton

Nini Batista  
Candice Beard  
Rachel Bejin  
Shadae Bellamy  
Amanda Bell-King  
Jasmine Benton  
Ethel Berger  
Sherrea Blake  
Beraetta Witcher-Boatery  
Remi Boatright  
Arthur Bogen  
Sherree Boldea  
Sherree Bolden  
Santiago Berrios-Bones  
Miriam Bonhomme  
Rebecca Bonhomme  
Blannie Bostic  
Carlah Edaile-Bragg  
Chester J. Brodnicki  
Althea Marshall Brooks  
Sharon Brooks  
Diane Brown  
Morgan Brown  
Awtaya Brown  
Dr. Khalilah L. Brown-Dean  
Joe Brummer

Marielis Bruno  
Laberta Brunson  
Stacey Brunson  
Chrystal Burgos  
Mary Jane Burt  
Priscilla Burwell  
Tahira Bush  
Emily Byrne  
Heather Calabrese  
Yolanda Caldera-Durant  
Marilyn Calderon  
Neva Caldwell  
Junie Callon  
Susan Canteen  
Desiree Caporaso  
Alicia Caraballo  
Tiffany Cari  
Marilyn M. Carson  
Addys Castillo  
Angelica Castro  
Paul A. Veiga, CFP  
Yoo Jin Chang  
Gabriela Chango  
Luis Chavez-Brumell  
Mary Chervenak  
Barbara Chesler  
Alexis Christmas  
Brenda Clay-Ozene  
Erik M. Clemons

Karen Clute  
Delphine Clyburn  
Dedra Cole  
Carlos Collazo  
Patrice Collins  
Eunisa Colon  
Luz Colville  
Mary Beth Congdon  
Kathleen Cooney  
Sylvia Cooper  
Kenya Corley  
Elizabeth Cortega  
Kathy Cortes  
Betse Courtmanche  
John Courtmanche  
Kenneth Cousar  
Cheryl Covington  
China Coy  
John D. Gordon, CPA  
Cerrella Craig  
Kanesha Crenshaw  
Nadine Crimley  
Hannah Croasmun  
Norm Forrester, CRPC  
Helene A. Augustine, CTFA  
Tony Curtis  
Anderson Curtis  
Lakeisha Dailey  
Maria Damiani

Laura Daniels  
Calvina Dargbe  
Lygia Davenport  
Tara Davila  
Andre Davis  
Maudest Davis  
Derrick Davis  
Kellyann Day  
Jose DeJesus  
Pamela Delerme  
Quashe Dennis  
Essence Weston Denny  
Diana Desmornes  
Lynette DeVore  
Carlos Diaz  
Daniel Diaz  
Tyree Dickey  
Jason Dorsey  
Jill Dotlo  
Anaedrea Douglas  
Diane Dow  
Jillian Driscoll  
Xuan Du  
Dwight Dukeson  
Dori Dumas  
Monique Durden  
Alfreda Edwards  
Herman Edwards  
Sherman Edwards  
Mohaganie Elder

Mary Elia  
Pat Elia  
Toni Ellis  
Yvonne Ellison  
Sathiya Eswarathasan  
Sheila Evans  
Faith Evans  
Robin Moore-Evans  
Lydia E. Feliciano  
Xia Feng  
Amy Fenollosa  
Tom Ficklin  
Chariasika Figuero  
Joelle Fishman  
Ben Florsheim  
Brenda Foskey-Cyrus  
Taylor Foundtree  
Tammy Frank  
Taisha Franklin  
Jacklyn Frasier  
Lori Frazier  
Jordana Frost  
Ramon Gallegos  
Enna Garcia  
Tina Garrity  
Tamiya Gary  
Antoine Gary  
Lensley Gay  
Gordon Geballe

Laura Gervais  
Belinda Gibbs  
Evelyn Gibbs  
Krista Gibbs  
Kerri Gilmore  
James Godley  
Anne Godsey  
Miriam Gohara  
Joanne Goldblum  
Ava Gonzales  
Jayson Gordneer  
Derrick Gordon  
Samone Gordon  
Tamika Gordon  
Curtis Gore  
Valen R. Grandelski  
Sandra Grant  
Thema Graves  
Kishon Gray  
David Greco  
Chante Greene  
Michael Greene  
Kimberly Griffith-Arts  
Kathy Hagearty  
Cinque Hall  
Jaclyn Hanson  
Annie Harper  
Laura Harrell  
Brenda Harris  
Maria Harris  
Maxine Harris  
Kenneth Harris  
Sasha Hay  
Priscilla Hayes  
Rachel Heerema  
Travon Henderson  
Cheryl Herbert  
Cassandra Herera  
Nadine Herring  
Barbara Hill  
Curtis Hill  
Howard K. Hill  
Lynette Hines  
Colleen Hines  
Hope Howard  
Marsha Hurt  
Arndra Hutchn  
Mubarakah Ibrahim  
TJ Clark II  
Yadira Ijeh  
Markesha Ingram  
Tressa A. Spears Jackson

Jamyra  
Sunset Jenkins  
Dr. Maria Jimenez  
Jorge L. Jimenez  
Kim Johannson  
Daisa Johnson  
William Johnson  
Corin Jones  
Tanya Jones  
Katie Jones  
Annie Kaplan  
Debbie Kee  
Tirzah Kemp  
Christine Kim  
Germano Kimbro  
Tyionna King  
Jamel Kinsey  
Shakaya Kitchens  
Thomas Knox  
Edward Konowitz  
Valerie Lane  
Caren Lang  
Kashonda Lawrence  
Laura Lawrence  
Frederick P. Leaf, Esq.  
Michael Van Leesten  
Rob Leighton  
Elaine Lickteig  
Pam Linder  
Sarah Long  
Anita Longstem  
Ingi-Mai Loorand  
Silvia Lopez  
Maribel Lopez  
Clara Nixon-Loyd  
Melissa Luckett  
Barbara Lumpkin  
Jessica Lynch  
Daviya Lyons  
Wanda Malave  
Sherman Malone  
Ebony Manning  
Sada Marshall  
Andrea Martinez  
Adrienne Mayo  
Jamal Maysonet  
Janic Maysonet  
LaKendra McCargo  
Latasha McClain  
Sarah McClan  
Vickie McClan  
Tiana Williams-McCray  
Latoya McCrea

Giselle Carlotta-McDonald  
Curlena McDonald  
Donna McGrath  
Shantasia McKee  
Terrance McKee  
Elizabeth McNamara  
Renee Mehra  
Vernon Melon  
Jennifer Mendez  
Omar Mendez  
Caprice Taylor Mendez  
Jill Meyerhoff  
Tanya Miller  
Jennifer Mitchell  
Maria Mojica  
Conley Monk  
Rodney Moore  
Louisa Moore  
Andrea Moore  
Melinda Moore  
Carla Morrison  
Jeanette Morrison  
Loria Morrison  
Montrel Morrison  
Gammy Moses  
Bidisha Nath, MD, MPH  
Wali Muhammad  
Rebecca Muniz  
Fernando Muniz  
Tennille Murphy  
Radouane Nasry  
Lisa Newfield  
Ashia Newton  
Rochelle Nivens  
Louis Nixon  
Susan Garcia Nofi  
Hon. Flemming L. Norcott Jr.  
Maria Norton  
Holly O'Brien  
John O'Rourke  
Francisco Ortiz  
John Padilla  
Abel Padro  
Kima Parker  
Angela Parker  
Tracey Parks  
Archana Patel  
Ms. Pearl  
Karen Peart  
Melissa Pensa  
Vivian Perez  
Dyric Petaway

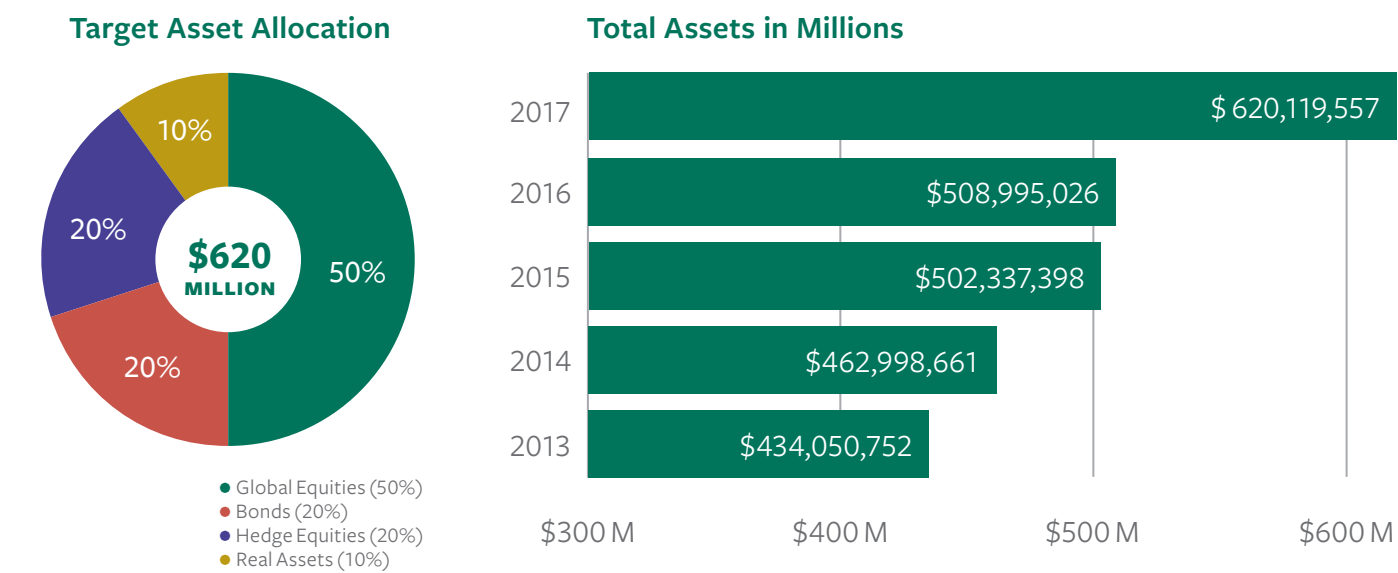
Edith Peters  
Liza Janssen Petra  
Doreen Picagli  
Dahiana Pijuan  
Megan Pinkard  
Trisha Pitter  
Norine Polio  
Seth Poole  
Melanie Post  
Deborah Price  
Libby Protzman  
Lee Purvis  
Deborah Quinone  
Natacha Ramos  
Sierra Ransom  
Leslie Rascati  
Elisha Ratchford  
Carolyn Ray  
Samara Redwine  
Gloria Reed  
Elisabeth Reilly  
Margarita Relaford  
Thabisa Rich  
Mychal Richardson  
Yanira Rios  
Michael Ritter  
Nikia Ritter  
Jennifer Rivera  
Allison Rivera  
Frances Rivera-Bragg  
Elizabeth Robinson  
Michaela Robinson  
Takima Robinson  
Ana Rodriguez  
Joe Rodriguez  
Leyda (Lolli) Rodriguez  
Rocio Rodriguez  
Randi Rubin Rodriguez  
Cynthia Rojas  
Yaritza Roman  
Shonda Rosetta  
Carol F. Ross  
Sheilah Rostow  
James E. Ryan  
Michael D. Saffer, Esq.  
Marta Elisa Moret  
Deborah Salters  
Shawn Samuel  
Shannon Samuels  
Alexandra Sanchez  
Raymond Sanders  
Manuel Santana  
Rosa Santana  
Naomi Santiago

Samantha Santiago  
Shauwne Santiago  
Raquel Santiago-Martinez  
Lineth Santos  
Kristi Saw  
David R. Schaefer, Esq.  
Patricia A. Scussel  
Barbara Segaloff  
Terri Sells  
Sandra Vigliotti Senich  
Christine Sessions  
Marketa Shabazz  
Abdurrahim Shakir  
N'Zinga Shani  
Galit Sharma  
Amelia Sherwood  
Ashley Sklar  
Gary Smart  
Amos Smith  
Caroline Smith  
Raven Smith  
Takara Smith  
Shanna Solomon  
Virginia Soto  
Monae Spell  
Carlton Staggers  
Jasmine Staggers  
Kerry Stamford  
Montel Stanton  
Verta Stevenson  
Dr. Frederick (Jerry) Streets  
Pat Stuart  
Camille Suggs  
Helen Suggs  
Johnesse Suggs  
Keva Suggs  
Stephanie Sumler  
Jeanette Sykes  
Linda Sylvester  
Cassie Taylor  
T'rome Telford  
Vincent Tinnerello  
Barbara Tinney  
Rachel Tobias  
Evelyn Tomasello  
Wanda Torres  
Bruce Trammell  
Ed Trimble

Idris Trotman  
Daizsana Turnage  
Snow Turner  
Efrain Urbina  
Miguel Mattia-Uribe  
Denice Vallejo  
Evelyn Vasquez  
Lorena Venegas  
Santia Vennett  
Christina Ventura  
Joseph Vidro  
Diane Visconti  
Janna Wagner  
Diana S. Wakerley  
Jennifer Walk  
LaKeisha Walker  
Angettica Wallace  
Marty Wallace  
Raymond Wallace  
TyQuazia Walton  
Shaquesha Washington  
Nijija-Ife Waters  
Cynthia Watson  
Taynisha Watts  
Ronnet Watts  
David Weinreb  
Sorini West  
Clinton Weston  
Bianca Whitaker  
Ruby Belton-White  
Crystal White  
Desiree White  
Claudine Wilkins-Chambers  
Joanne Willcox  
Tamara Wilson  
Imani Wilson  
Laronda Winfrey  
Elizabeth Yarburgh  
Elizabeth Yasyn  
Jean Zadany  
Roman Zajac  
Mary Ann Zavorskaskas



The Community Foundation’s assets grew to \$620 Million as of December 31, 2017. The annualized investment return of The Corporation since 1995 has been 8.9% net of investment management fees, surpassing both its market-driven benchmark and the performance of almost all comparably-sized community foundations nationwide.



Mission Related Investments Create Powerful Partnerships

The Community Foundation has continued its work to make mission related investments (MRIs) in local nonprofit and for-profit ventures that it believes will produce positive long-term community benefits. In addition to a small allocation from a portion of its endowment, The Foundation also received \$41M from a private foundation to create a new MRI partnership with a focus on the Newhallville-Dixwell neighborhood of New Haven. The Foundation leverages its impact through support from individual and institutional donors, as well as other local, regional and national funding partners. MRIs made to date include:

Company / Entity	Investment Amount	Business Description
Freshbev	\$2,000,000	HPP craft juicer with 100% traceable and natural ingredients
Sea Greens/ Green Wave	\$250,000	A regenerative aquaculture based on sea greens for healthier food
Fitscript	\$650,000	A digital healthcare company with a patented application for halting Type 2 diabetes
Homeownership Program	\$1,000,000	Home ownership loans for low to moderate home buyers
My Gene Counsel	\$250,000	Female-owned digital genetic counselling company

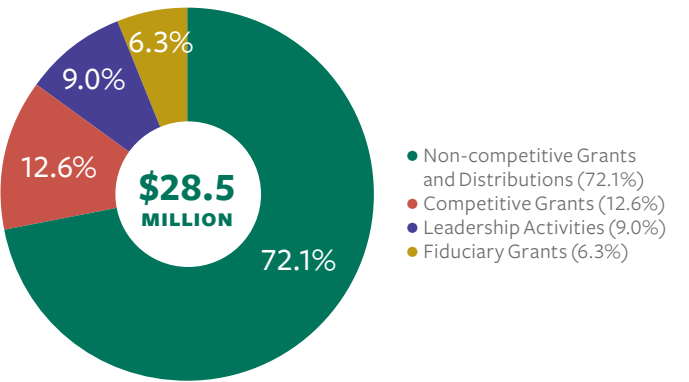
Combined Statements of Financial Position

	2017	2016
<b>Assets</b>		
Cash and Cash Equivalents	\$ 7,123,652	\$ 1,907,231
Investments at Market Value — Component Funds	376,781,960	338,191,021
Investments at Market Value — Organization Funds	183,895,585	160,603,988
Investments at Market Value — MRI Investment Funds	44,250,553	—
Investment in Real Estate	3,169,303	2,801,250
<b>Total Investments</b>	<b>615,221,053</b>	<b>503,503,490</b>
Mission-Related Investments	2,669,125	2,474,000
Contributions Receivable	287,157	1,577,940
Grants Receivable	925,704	346,354
Split-Interest Agreements	603,227	624,531
Other Assets	39,161	15,322
Furniture and Equipment, Net	374,130	453,389
<b>Total Assets</b>	<b>\$ 620,119,557</b>	<b>\$ 508,995,026</b>
<b>Liabilities and Net Assets</b>		
<b>Liabilities</b>		
Accounts Payable and Accrued Expenses	\$ 482,441	\$ 469,925
Organization Funds	183,895,585	160,603,988
MRI Investment Funds	44,250,553	—
Liabilities Under Split-Interest Agreements	385,605	385,157
Grants Payable	1,601,206	1,855,229
<b>Total Liabilities</b>	<b>230,615,390</b>	<b>163,314,299</b>
<b>Net Assets</b>		
Unrestricted	388,202,897	344,465,200
Temporarily Restricted	1,301,270	1,215,527
<b>Total Net Assets</b>	<b>389,504,167</b>	<b>345,680,727</b>
<b>Total Liabilities and Net Assets</b>	<b>\$ 620,119,557</b>	<b>\$ 508,995,026</b>

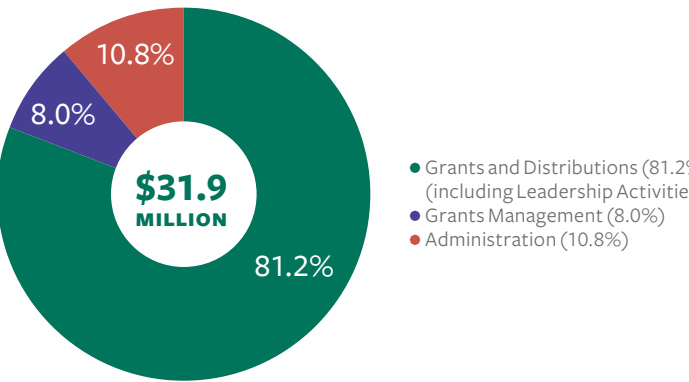
Combined Statements of Activities

	2017	2016
<b>Revenue, Gains and Other Support</b>		
Contributions	\$ 53,798,658	\$ 23,008,820
Less Contributions to MRI Investment Funds	(41,411,739)	—
Less Contributions to Organization Funds	(4,415,031)	(10,325,708)
<b>Net Contributions</b>	<b>7,971,888</b>	<b>12,683,112</b>
Investment Gain, Net	57,895,883	13,519,328
Increase in value of MRI Investment Funds Private Equity	19,125	—
Split-Interest Agreements Released from Restrictions	—	—
Change in Value of Split-Interest Agreements, Net	214,164	43,201
<b>Total Revenue, Gains and Other Support</b>	<b>\$ 66,101,060</b>	<b>\$ 26,245,641</b>
<b>Expense</b>		
Grants and Distributions, Approved Net	\$ 25,946,701	\$ 29,211,759
Grants for Program Management and Direct Grant Activities	2,566,568	2,484,611
<b>Total Grants and Distributions Expense</b>	<b>28,513,269</b>	<b>31,696,370</b>
Less Distributions from Organization Funds	(9,703,752)	(8,465,120)
<b>Net Grant and Distributions Expense</b>	<b>18,809,517</b>	<b>23,231,250</b>
Financial, Endowment and Investment Management	1,316,778	1,273,261
Development, Donor Services and Fund Stewardship	935,837	904,910
Management, Leadership and Operations	1,215,488	1,175,319
<b>Total Administration Expense</b>	<b>3,468,103</b>	<b>3,353,490</b>
<b>Total Expense</b>	<b>\$ 22,277,620</b>	<b>\$ 26,584,740</b>
Increase (Decrease) in Net Assets	43,823,440	(339,099)
Net Assets — Beginning of Year	345,680,727	346,019,826
<b>Net Assets — End of Year</b>	<b>\$ 389,504,167</b>	<b>\$ 345,680,727</b>

Total Grants and Grants Management Expense



Total Expense



\*Complete audited financial statements of The Community Foundation for Greater New Haven, which include the Valley Community Foundation in accordance with generally accepted accounting principles, are available at [cfgnh.org/financials](http://cfgnh.org/financials)





### Executive

William W. Ginsberg  
*President & CEO*

Leigh Curtis Higgins, EdD  
*Senior Director for Professional Development and for the Executive Office*

Ellen Perrotti  
*Administrative Associate*

Jolyn Washington Walker  
*Administration Officer*

### Planning & Operations

Angela G. Powers  
*Senior Vice President for Planning and Operations*

Tricia Caldwell, MA  
*Director of Communications*

Kathleen Ceil  
*Communications Officer*

Ratasha Smith  
*Communications Officer*

Deborah L. Wright  
*Philanthropic Officer*

### Development & Donor Services

Dorothy (Dotty) Weston-Murphy, CAP®  
*Senior Vice President for Development and Donor Services*

Carmen Burgos  
*Development Associate*

Sharon Cappetta  
*Director of Development*

Linda M. Estacion  
*Director of Donor Services and Development Operations*

Kelli R. Gibson  
*Development Associate*

### Finance, Investments, Administration & Technology

A.F. Drew Alden  
*Senior Vice President for Investments CFO and Chief Compliance Officer*

President & CEO, TCF-Mission Investments Company

Wendy G. Gamba  
*Vice President for Finance & Operations*

Jennifer A. Glover-Keller, MBA  
*Investment Services Manager*

Tamara Gray  
*Data Management Associate*

Brandi L. Kryvonis  
*Disbursements Officer*

Ngawang Lama  
*Finance Associate*

Marcie Monaco  
*Director of Finance and Accounting*

José R. Ruiz  
*Endowment Associate*

Vilandria Turner  
*Director of Information Management and Analysis*

### Human Resources & Organizational Culture

Leon Bailey Jr., MPA, DMIN  
*Senior Vice President for Human Resources and Organizational Culture*

Lisa Carter  
*Human Resources Manager*

Leigh Curtis Higgins, EdD  
*Senior Director for Professional Development and for the Executive Office*

### Grantmaking & Strategy

Christina M. Ciociola, MSW, MPH  
*Senior Vice President for Grantmaking and Strategy*

Sarah J. H. Fabish  
*Vice President for Grantmaking and Scholarships*

Kenn Harris  
*Vice President of Community Engagement and Director of New Haven Healthy Start*

Denise M. Canning  
*Grants Manager*

Stephanie Chung  
*Nonprofit Relations Manager*

Eliezer Lee Cruz  
*Director of Community Outreach*

Jackie Downing  
*Director of Grantmaking and Nonprofit Effectiveness*

Matthew Higbee  
*Research and Communications Officer*

Caprice Taylor Mendez, MEd  
*Strategic Program Manager*

Logan Roddy  
*Grantmaking Associate*

Kara Straun  
*Knowledge and Evaluation Manager*

Cynthia Chan  
*Program Assistant for New Haven Healthy Start*

Natasha Ray, MS  
*Core Services Manager for New Haven Healthy Start*

Galit Sharma, MA  
*Program Manager for New Haven Healthy Start*

**Copywriting:** Tricia Caldwell, William Ginsberg, Matthew Higbee, Angela Powers, Ratasha Smith.  
**Photography:** Paul Bass, Kathleen Ceil, Ian Christmann, iStock.com/Getty, Mara Lavitt, Judy Sirota Rosenthal, Melanie Stengel, Chris Volpe. Some photos courtesy of the featured organization.  
**Design:** Group C Inc. **Printing:** GHP Media

Printed on uncoated paper with post-consumer recycled content using vegetable-based inks to be more environmentally friendly.







# \$434,526,038

**GRANTS AND DISTRIBUTIONS  
OVER THE LAST 90 YEARS,  
AND COUNTING...**

In 1928, Nettie Dayton became the first person to establish a fund with The Community Foundation *for* Greater New Haven, and her generosity has inspired thousands of others in the ninety years since.

“... I give and bequeath... in trust for the public, charitable and educational uses and purposes... subject to all of the provisions of the Resolution and Declaration of Trust... creating The New Haven Foundation....”

The Nettie J. Dayton Fund, 1928

*Our community's future...*  
**What inspires you?**





**\$434,526,038**

GRANTS AND DISTRIBUTIONS  
OVER THE LAST 90 YEARS,  
AND COUNTING...

In 1928, Nettie Dayton became the first person to establish a fund with The Community Foundation *for* Greater New Haven, and her generosity has inspired thousands of others in the ninety years since.

“... I give and bequeath... in trust for the public, charitable and educational uses and purposes... subject to all of the provisions of the Resolution and Declaration of Trust... creating The New Haven Foundation....”

The Nettie J. Dayton Fund, 1928

*Our community's future...*  
**What inspires you?**

IN THESE CHALLENGING TIMES  
**COMMUNITY +**  
**OPPORTUNITY**  
**NOW MORE THAN EVER**

